

# RIVER BANK SUBDIVISION AND THE REARRANGEMENT OF LOTS 18, 19, & 20 OF RIVER WHORTON BEND, ETOWAH COUNTY, ALABAMA

MISC/LANR015 1999-6841

-SEE-

PLAT BOOK 'K', PAGE 113  
DRAWING: MISC BOOK/LIB: PAGE 113/117

STATE OF ALABAMA  
COUNTY OF ETOWAH

The undersigned, John Dequey Approval, does hereby ratify and adopt the within map as being true and correct. I further certify that I am the owner of and the only person having any right, title or interest in the land shown on the plat of River Whorton Bend Phase II, and that this plat represents a correct survey of the same. I have caused the plat to be prepared by a registered professional land surveyor, and the plat is correct for the subdivision and maintenance of the public utilities, access, and/or drainage. We hereby guarantee a clear title to all the lands so dedicated from encumbrances and our heirs or assigns forever, and have caused the same to be reduced from encumbrances so that the title is clear except as shown in the abstractor's certificate.

This the 12<sup>th</sup> day of August, 1999,  
By: *John Dequey Approval*  
John Dequey Approval

STATE OF ALABAMA  
COUNTY OF ETOWAH

I, *William S. Smith*, as Notary Public in and for said county do hereby certify that John Dequey Approval is a duly qualified and sworn Notary Public in and for said county and under his hand and seal this 12<sup>th</sup> day of August, 1999, at the same place as the contents, have executed the same voluntarily on the day the same were due.

Witness my hand and seal this 12<sup>th</sup> day of August, 1999.  
My commission expires 10/04/01  
CERTIFICATE OF APPROVAL OF THE FINAL PLAT

Pursuant to the applicable Subdivision Regulations all the requirements for approval have been satisfied. This plat has been given final approval on \_\_\_\_\_

COOPERATIVE PLANNING COMMISSION - CIVILIAN DATE 7/14/99  
CITY ENGINEERING DEPARTMENT DATE 8/30/99  
BRIAN C. ELLIOTT DATE 9/24/99  
ETOWAH COUNTY ENGINEER DATE 9/24/99  
WHORTON BEND WATER AUTHORITY DATE 8/19/99

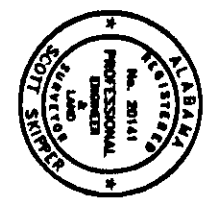
This subdivision meets the approval of the Etowah County Health Department and is subject to the approval of the Etowah County Health Department and health department, which conditions are made a part of this approval as if set out hereon. \* \* \*

Approved By: *William S. Smith*  
ETOWAH COUNTY HEALTH DEPARTMENT DATE 8/13/99

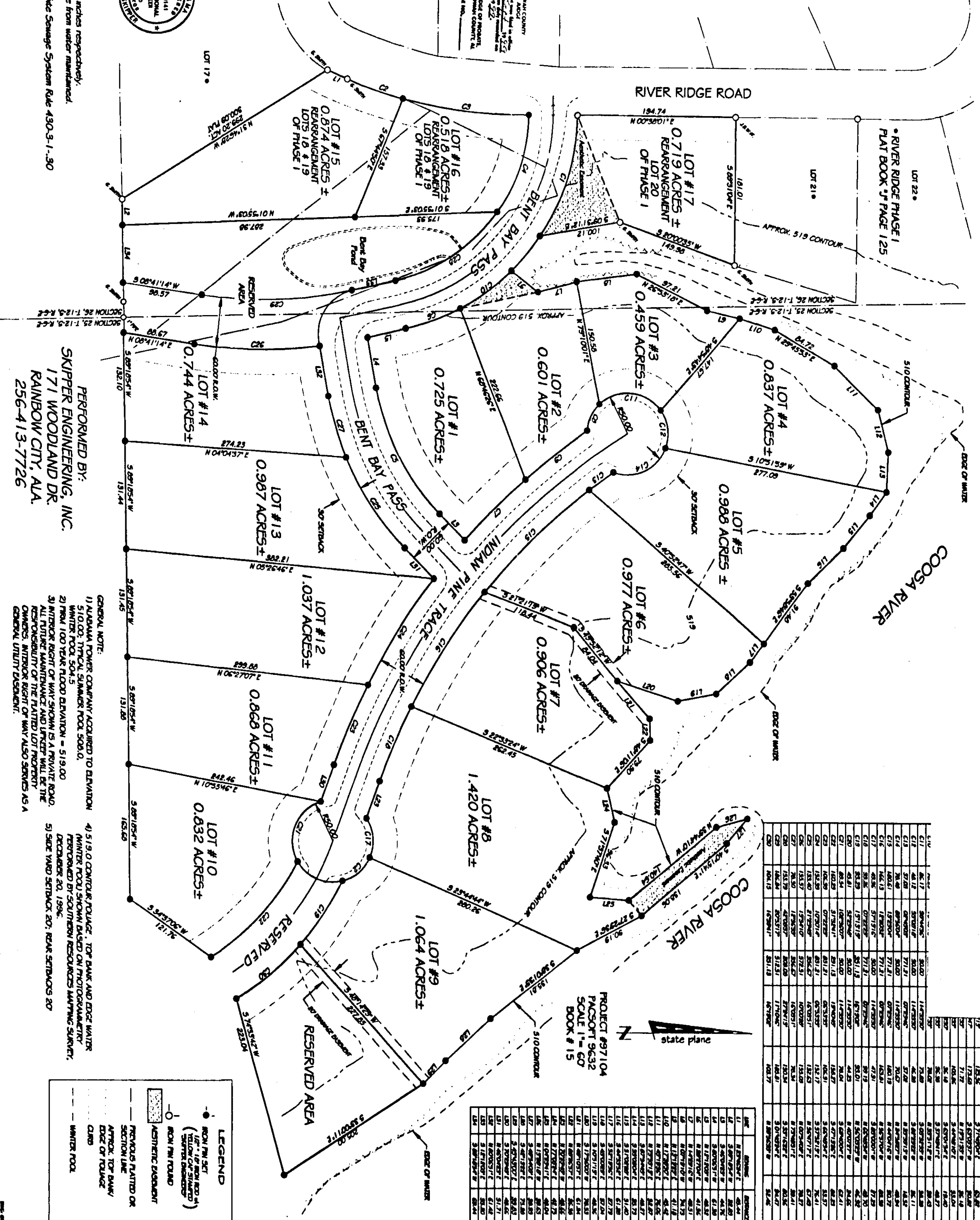
STATE OF ALABAMA  
COUNTY OF ETOWAH

I, Scott Shipper, a registered engineer and land surveyor of Etowah County, Alabama hereby certify that all parts of this survey and drawing have been completed in accordance with the American Technical Standards for the Practice of Land Surveying in the State of Alabama.

According to my survey this 12<sup>th</sup> day of August 1999.  
Scott Shipper, Reg. No. 720141  
Survey Engineering, Inc.



HEALTH DEPARTMENT GENERAL NOTES:  
1. All lots are to be approved with 2' side depth impervious.  
2. All lots are to be approved with 2' side depth impervious.  
3. All lots are to be approved with 2' side depth impervious.  
4. All lots are to be approved with 2' side depth impervious.  
5. All lots are to be approved with 2' side depth impervious.  
6. All lots are to be approved with 2' side depth impervious.  
7. All lots are to be approved with 2' side depth impervious.  
8. All lots are to be approved with 2' side depth impervious.  
9. All lots are to be approved with 2' side depth impervious.  
10. All lots are to be approved with 2' side depth impervious.  
11. All lots are to be approved with 2' side depth impervious.  
12. All lots are to be approved with 2' side depth impervious.  
13. All lots are to be approved with 2' side depth impervious.  
14. All lots are to be approved with 2' side depth impervious.  
15. All lots are to be approved with 2' side depth impervious.  
16. All lots are to be approved with 2' side depth impervious.  
17. All lots are to be approved with 2' side depth impervious.  
18. All lots are to be approved with 2' side depth impervious.  
19. All lots are to be approved with 2' side depth impervious.  
20. All lots are to be approved with 2' side depth impervious.  
21. All lots are to be approved with 2' side depth impervious.  
22. All lots are to be approved with 2' side depth impervious.  
23. All lots are to be approved with 2' side depth impervious.  
24. All lots are to be approved with 2' side depth impervious.  
25. All lots are to be approved with 2' side depth impervious.  
26. All lots are to be approved with 2' side depth impervious.  
27. All lots are to be approved with 2' side depth impervious.  
28. All lots are to be approved with 2' side depth impervious.  
29. All lots are to be approved with 2' side depth impervious.  
30. All lots are to be approved with 2' side depth impervious.  
31. All lots are to be approved with 2' side depth impervious.  
32. All lots are to be approved with 2' side depth impervious.  
33. All lots are to be approved with 2' side depth impervious.  
34. All lots are to be approved with 2' side depth impervious.  
35. All lots are to be approved with 2' side depth impervious.  
36. All lots are to be approved with 2' side depth impervious.  
37. All lots are to be approved with 2' side depth impervious.  
38. All lots are to be approved with 2' side depth impervious.  
39. All lots are to be approved with 2' side depth impervious.  
40. All lots are to be approved with 2' side depth impervious.  
41. All lots are to be approved with 2' side depth impervious.  
42. All lots are to be approved with 2' side depth impervious.  
43. All lots are to be approved with 2' side depth impervious.  
44. All lots are to be approved with 2' side depth impervious.  
45. All lots are to be approved with 2' side depth impervious.  
46. All lots are to be approved with 2' side depth impervious.  
47. All lots are to be approved with 2' side depth impervious.  
48. All lots are to be approved with 2' side depth impervious.  
49. All lots are to be approved with 2' side depth impervious.  
50. All lots are to be approved with 2' side depth impervious.  
51. All lots are to be approved with 2' side depth impervious.  
52. All lots are to be approved with 2' side depth impervious.  
53. All lots are to be approved with 2' side depth impervious.  
54. All lots are to be approved with 2' side depth impervious.  
55. All lots are to be approved with 2' side depth impervious.  
56. All lots are to be approved with 2' side depth impervious.  
57. All lots are to be approved with 2' side depth impervious.  
58. All lots are to be approved with 2' side depth impervious.  
59. All lots are to be approved with 2' side depth impervious.  
60. All lots are to be approved with 2' side depth impervious.  
61. All lots are to be approved with 2' side depth impervious.  
62. All lots are to be approved with 2' side depth impervious.  
63. All lots are to be approved with 2' side depth impervious.  
64. All lots are to be approved with 2' side depth impervious.  
65. All lots are to be approved with 2' side depth impervious.  
66. All lots are to be approved with 2' side depth impervious.  
67. All lots are to be approved with 2' side depth impervious.  
68. All lots are to be approved with 2' side depth impervious.  
69. All lots are to be approved with 2' side depth impervious.  
70. All lots are to be approved with 2' side depth impervious.  
71. All lots are to be approved with 2' side depth impervious.  
72. All lots are to be approved with 2' side depth impervious.  
73. All lots are to be approved with 2' side depth impervious.  
74. All lots are to be approved with 2' side depth impervious.  
75. All lots are to be approved with 2' side depth impervious.  
76. All lots are to be approved with 2' side depth impervious.  
77. All lots are to be approved with 2' side depth impervious.  
78. All lots are to be approved with 2' side depth impervious.  
79. All lots are to be approved with 2' side depth impervious.  
80. All lots are to be approved with 2' side depth impervious.  
81. All lots are to be approved with 2' side depth impervious.  
82. All lots are to be approved with 2' side depth impervious.  
83. All lots are to be approved with 2' side depth impervious.  
84. All lots are to be approved with 2' side depth impervious.  
85. All lots are to be approved with 2' side depth impervious.  
86. All lots are to be approved with 2' side depth impervious.  
87. All lots are to be approved with 2' side depth impervious.  
88. All lots are to be approved with 2' side depth impervious.  
89. All lots are to be approved with 2' side depth impervious.  
90. All lots are to be approved with 2' side depth impervious.  
91. All lots are to be approved with 2' side depth impervious.  
92. All lots are to be approved with 2' side depth impervious.  
93. All lots are to be approved with 2' side depth impervious.  
94. All lots are to be approved with 2' side depth impervious.  
95. All lots are to be approved with 2' side depth impervious.  
96. All lots are to be approved with 2' side depth impervious.  
97. All lots are to be approved with 2' side depth impervious.  
98. All lots are to be approved with 2' side depth impervious.  
99. All lots are to be approved with 2' side depth impervious.  
100. All lots are to be approved with 2' side depth impervious.



LOT	ACRES	OWNER	REMARKS
1	0.725	RESERVED	
2	0.601	RESERVED	
3	0.459	RESERVED	
4	0.837	RESERVED	
5	0.988	RESERVED	
6	0.974	RESERVED	
7	0.906	RESERVED	
8	1.420	RESERVED	
9	1.064	RESERVED	
10	0.832	RESERVED	
11	0.868	RESERVED	
12	1.037	RESERVED	
13	0.987	RESERVED	
14	0.744	RESERVED	
15	0.874	RESERVED	

PERFORMED BY:  
SKIPPER ENGINEERING, INC.  
171 WOODLAND DR.  
RAINBOW CITY, ALA.  
256-413-7726

GENERAL NOTE:  
1. ALL LOTS ARE TO BE APPROVED WITH 2' SIDE DEPTH IMPERVIOUS.  
2. ALL LOTS ARE TO BE APPROVED WITH 2' SIDE DEPTH IMPERVIOUS.  
3. ALL LOTS ARE TO BE APPROVED WITH 2' SIDE DEPTH IMPERVIOUS.  
4. ALL LOTS ARE TO BE APPROVED WITH 2' SIDE DEPTH IMPERVIOUS.  
5. ALL LOTS ARE TO BE APPROVED WITH 2' SIDE DEPTH IMPERVIOUS.  
6. ALL LOTS ARE TO BE APPROVED WITH 2' SIDE DEPTH IMPERVIOUS.  
7. ALL LOTS ARE TO BE APPROVED WITH 2' SIDE DEPTH IMPERVIOUS.  
8. ALL LOTS ARE TO BE APPROVED WITH 2' SIDE DEPTH IMPERVIOUS.  
9. ALL LOTS ARE TO BE APPROVED WITH 2' SIDE DEPTH IMPERVIOUS.  
10. ALL LOTS ARE TO BE APPROVED WITH 2' SIDE DEPTH IMPERVIOUS.  
11. ALL LOTS ARE TO BE APPROVED WITH 2' SIDE DEPTH IMPERVIOUS.  
12. ALL LOTS ARE TO BE APPROVED WITH 2' SIDE DEPTH IMPERVIOUS.  
13. ALL LOTS ARE TO BE APPROVED WITH 2' SIDE DEPTH IMPERVIOUS.  
14. ALL LOTS ARE TO BE APPROVED WITH 2' SIDE DEPTH IMPERVIOUS.  
15. ALL LOTS ARE TO BE APPROVED WITH 2' SIDE DEPTH IMPERVIOUS.  
16. ALL LOTS ARE TO BE APPROVED WITH 2' SIDE DEPTH IMPERVIOUS.  
17. ALL LOTS ARE TO BE APPROVED WITH 2' SIDE DEPTH IMPERVIOUS.  
18. ALL LOTS ARE TO BE APPROVED WITH 2' SIDE DEPTH IMPERVIOUS.  
19. ALL LOTS ARE TO BE APPROVED WITH 2' SIDE DEPTH IMPERVIOUS.  
20. ALL LOTS ARE TO BE APPROVED WITH 2' SIDE DEPTH IMPERVIOUS.  
21. ALL LOTS ARE TO BE APPROVED WITH 2' SIDE DEPTH IMPERVIOUS.  
22. ALL LOTS ARE TO BE APPROVED WITH 2' SIDE DEPTH IMPERVIOUS.  
23. ALL LOTS ARE TO BE APPROVED WITH 2' SIDE DEPTH IMPERVIOUS.  
24. ALL LOTS ARE TO BE APPROVED WITH 2' SIDE DEPTH IMPERVIOUS.  
25. ALL LOTS ARE TO BE APPROVED WITH 2' SIDE DEPTH IMPERVIOUS.  
26. ALL LOTS ARE TO BE APPROVED WITH 2' SIDE DEPTH IMPERVIOUS.  
27. ALL LOTS ARE TO BE APPROVED WITH 2' SIDE DEPTH IMPERVIOUS.  
28. ALL LOTS ARE TO BE APPROVED WITH 2' SIDE DEPTH IMPERVIOUS.  
29. ALL LOTS ARE TO BE APPROVED WITH 2' SIDE DEPTH IMPERVIOUS.  
30. ALL LOTS ARE TO BE APPROVED WITH 2' SIDE DEPTH IMPERVIOUS.  
31. ALL LOTS ARE TO BE APPROVED WITH 2' SIDE DEPTH IMPERVIOUS.  
32. ALL LOTS ARE TO BE APPROVED WITH 2' SIDE DEPTH IMPERVIOUS.  
33. ALL LOTS ARE TO BE APPROVED WITH 2' SIDE DEPTH IMPERVIOUS.  
34. ALL LOTS ARE TO BE APPROVED WITH 2' SIDE DEPTH IMPERVIOUS.  
35. ALL LOTS ARE TO BE APPROVED WITH 2' SIDE DEPTH IMPERVIOUS.  
36. ALL LOTS ARE TO BE APPROVED WITH 2' SIDE DEPTH IMPERVIOUS.  
37. ALL LOTS ARE TO BE APPROVED WITH 2' SIDE DEPTH IMPERVIOUS.  
38. ALL LOTS ARE TO BE APPROVED WITH 2' SIDE DEPTH IMPERVIOUS.  
39. ALL LOTS ARE TO BE APPROVED WITH 2' SIDE DEPTH IMPERVIOUS.  
40. ALL LOTS ARE TO BE APPROVED WITH 2' SIDE DEPTH IMPERVIOUS.  
41. ALL LOTS ARE TO BE APPROVED WITH 2' SIDE DEPTH IMPERVIOUS.  
42. ALL LOTS ARE TO BE APPROVED WITH 2' SIDE DEPTH IMPERVIOUS.  
43. ALL LOTS ARE TO BE APPROVED WITH 2' SIDE DEPTH IMPERVIOUS.  
44. ALL LOTS ARE TO BE APPROVED WITH 2' SIDE DEPTH IMPERVIOUS.  
45. ALL LOTS ARE TO BE APPROVED WITH 2' SIDE DEPTH IMPERVIOUS.  
46. ALL LOTS ARE TO BE APPROVED WITH 2' SIDE DEPTH IMPERVIOUS.  
47. ALL LOTS ARE TO BE APPROVED WITH 2' SIDE DEPTH IMPERVIOUS.  
48. ALL LOTS ARE TO BE APPROVED WITH 2' SIDE DEPTH IMPERVIOUS.  
49. ALL LOTS ARE TO BE APPROVED WITH 2' SIDE DEPTH IMPERVIOUS.  
50. ALL LOTS ARE TO BE APPROVED WITH 2' SIDE DEPTH IMPERVIOUS.  
51. ALL LOTS ARE TO BE APPROVED WITH 2' SIDE DEPTH IMPERVIOUS.  
52. ALL LOTS ARE TO BE APPROVED WITH 2' SIDE DEPTH IMPERVIOUS.  
53. ALL LOTS ARE TO BE APPROVED WITH 2' SIDE DEPTH IMPERVIOUS.  
54. ALL LOTS ARE TO BE APPROVED WITH 2' SIDE DEPTH IMPERVIOUS.  
55. ALL LOTS ARE TO BE APPROVED WITH 2' SIDE DEPTH IMPERVIOUS.  
56. ALL LOTS ARE TO BE APPROVED WITH 2' SIDE DEPTH IMPERVIOUS.  
57. ALL LOTS ARE TO BE APPROVED WITH 2' SIDE DEPTH IMPERVIOUS.  
58. ALL LOTS ARE TO BE APPROVED WITH 2' SIDE DEPTH IMPERVIOUS.  
59. ALL LOTS ARE TO BE APPROVED WITH 2' SIDE DEPTH IMPERVIOUS.  
60. ALL LOTS ARE TO BE APPROVED WITH 2' SIDE DEPTH IMPERVIOUS.  
61. ALL LOTS ARE TO BE APPROVED WITH 2' SIDE DEPTH IMPERVIOUS.  
62. ALL LOTS ARE TO BE APPROVED WITH 2' SIDE DEPTH IMPERVIOUS.  
63. ALL LOTS ARE TO BE APPROVED WITH 2' SIDE DEPTH IMPERVIOUS.  
64. ALL LOTS ARE TO BE APPROVED WITH 2' SIDE DEPTH IMPERVIOUS.  
65. ALL LOTS ARE TO BE APPROVED WITH 2' SIDE DEPTH IMPERVIOUS.  
66. ALL LOTS ARE TO BE APPROVED WITH 2' SIDE DEPTH IMPERVIOUS.  
67. ALL LOTS ARE TO BE APPROVED WITH 2' SIDE DEPTH IMPERVIOUS.  
68. ALL LOTS ARE TO BE APPROVED WITH 2' SIDE DEPTH IMPERVIOUS.  
69. ALL LOTS ARE TO BE APPROVED WITH 2' SIDE DEPTH IMPERVIOUS.  
70. ALL LOTS ARE TO BE APPROVED WITH 2' SIDE DEPTH IMPERVIOUS.  
71. ALL LOTS ARE TO BE APPROVED WITH 2' SIDE DEPTH IMPERVIOUS.  
72. ALL LOTS ARE TO BE APPROVED WITH 2' SIDE DEPTH IMPERVIOUS.  
73. ALL LOTS ARE TO BE APPROVED WITH 2' SIDE DEPTH IMPERVIOUS.  
74. ALL LOTS ARE TO BE APPROVED WITH 2' SIDE DEPTH IMPERVIOUS.  
75. ALL LOTS ARE TO BE APPROVED WITH 2' SIDE DEPTH IMPERVIOUS.  
76. ALL LOTS ARE TO BE APPROVED WITH 2' SIDE DEPTH IMPERVIOUS.  
77. ALL LOTS ARE TO BE APPROVED WITH 2' SIDE DEPTH IMPERVIOUS.  
78. ALL LOTS ARE TO BE APPROVED WITH 2' SIDE DEPTH IMPERVIOUS.  
79. ALL LOTS ARE TO BE APPROVED WITH 2' SIDE DEPTH IMPERVIOUS.  
80. ALL LOTS ARE TO BE APPROVED WITH 2' SIDE DEPTH IMPERVIOUS.  
81. ALL LOTS ARE TO BE APPROVED WITH 2' SIDE DEPTH IMPERVIOUS.  
82. ALL LOTS ARE TO BE APPROVED WITH 2' SIDE DEPTH IMPERVIOUS.  
83. ALL LOTS ARE TO BE APPROVED WITH 2' SIDE DEPTH IMPERVIOUS.  
84. ALL LOTS ARE TO BE APPROVED WITH 2' SIDE DEPTH IMPERVIOUS.  
85. ALL LOTS ARE TO BE APPROVED WITH 2' SIDE DEPTH IMPERVIOUS.  
86. ALL LOTS ARE TO BE APPROVED WITH 2' SIDE DEPTH IMPERVIOUS.  
87. ALL LOTS ARE TO BE APPROVED WITH 2' SIDE DEPTH IMPERVIOUS.  
88. ALL LOTS ARE TO BE APPROVED WITH 2' SIDE DEPTH IMPERVIOUS.  
89. ALL LOTS ARE TO BE APPROVED WITH 2' SIDE DEPTH IMPERVIOUS.  
90. ALL LOTS ARE TO BE APPROVED WITH 2' SIDE DEPTH IMPERVIOUS.  
91. ALL LOTS ARE TO BE APPROVED WITH 2' SIDE DEPTH IMPERVIOUS.  
92. ALL LOTS ARE TO BE APPROVED WITH 2' SIDE DEPTH IMPERVIOUS.  
93. ALL LOTS ARE TO BE APPROVED WITH 2' SIDE DEPTH IMPERVIOUS.  
94. ALL LOTS ARE TO BE APPROVED WITH 2' SIDE DEPTH IMPERVIOUS.  
95. ALL LOTS ARE TO BE APPROVED WITH 2' SIDE DEPTH IMPERVIOUS.  
96. ALL LOTS ARE TO BE APPROVED WITH 2' SIDE DEPTH IMPERVIOUS.  
97. ALL LOTS ARE TO BE APPROVED WITH 2' SIDE DEPTH IMPERVIOUS.  
98. ALL LOTS ARE TO BE APPROVED WITH 2' SIDE DEPTH IMPERVIOUS.  
99. ALL LOTS ARE TO BE APPROVED WITH 2' SIDE DEPTH IMPERVIOUS.  
100. ALL LOTS ARE TO BE APPROVED WITH 2' SIDE DEPTH IMPERVIOUS.