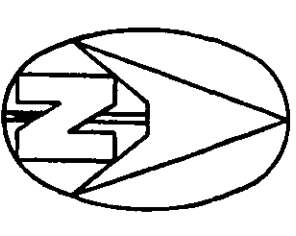


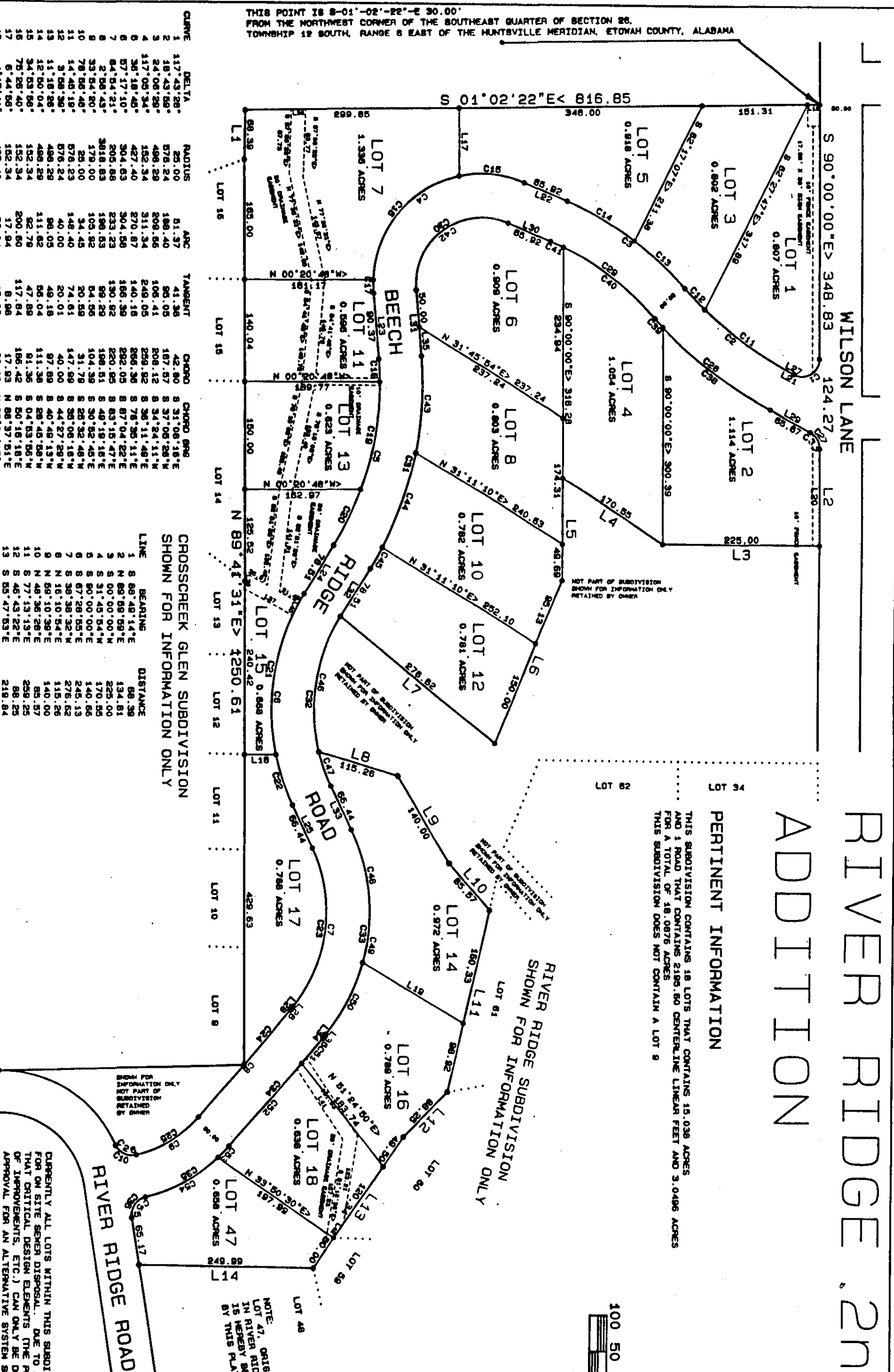
RIVER RIDGE 2nd ADDITION

Plat Book 1-18 68



PERTINENT INFORMATION
THIS SUBDIVISION CONTAINS 24 LOTS THAT CONTAINS 15,038 ACRES AND 1 ROAD THAT CONTAINS 2.560 ACRES. THE TOTAL OF 18,097 ACRES. THIS SUBDIVISION DOES NOT CONTAIN A LOT 9.

RIVER RIDGE SUBDIVISION
SHOWN FOR INFORMATION ONLY



NOTE: ALL ORIGINAL RECORDS, LOT DIMENSIONS, AND BEARINGS SHOWN ON THIS PLAT BY THIS PLAT.

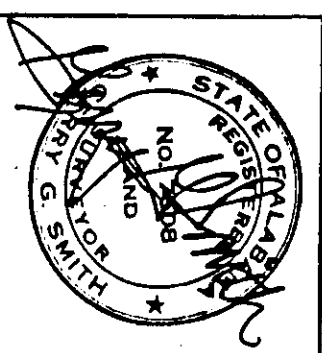
DISCLAIMER: ALL LOTS WITHIN THIS SUBDIVISION ARE NOT APPROVED FOR ON SITE SEWER DISPOSAL. DUE TO ADVERSE SOIL CONDITIONS AND THE FACT THAT CRITICAL DESIGN ELEMENTS (THE PROPOSED NUMBER OF BEDROOMS, POSITIONING OF THE SEWER MAIN, AND THE LOCATION OF THE SEWER MAIN) ARE BEING CONSIDERED FOR AN ALTERNATE DESIGN. THE DESIGNER'S RESPONSIBILITY IS TO PROVIDE AN ALTERNATE DESIGN THAT MEETS ALL APPLICABLE REGULATIONS AND STANDARDS. IT IS MANDATORY THAT AN APPLICATION FOR AN ON SITE SEWER SYSTEM, INCLUDING REGULAR SOIL TESTS, PENETRATION TESTS AND AN INDIVIDUAL DESIGN BE SUBMITTED TO THE LOCAL HEALTH DEPARTMENT FOR APPROVAL AND CONSIDERATION OF A PERMIT PRIOR TO INITIATING ANY RESIDENTIAL CONSTRUCTION.

DATE: 7-27-87

PAGE 1 OF TWO PAGES.

PLAT OF RIVER RIDGE SUBDIVISION 2ND ADDITION AND REVISION OF LOT 47 RIVER RIDGE 1ST ADDITION

GERRY G. SMITH
PROFESSIONAL LAND SURVEYOR
No. 2555, State of Alabama, 12/17/84, 28006



DATE: 7-27-87	SCALE: 1"=100'	CHECKED: SM
FIELD: GS	DRAWN: JP	

CROSSCREEK GLEN SUBDIVISION
SHOWN FOR INFORMATION ONLY

LINE	BEARING	DISTANCE
1	N 89°48'14"E	68.36
2	N 89°08'09"E	134.81
3	N 89°08'09"E	134.81
4	S 89°08'09"E	134.81
5	S 89°08'09"E	134.81
6	S 89°08'09"E	134.81
7	S 89°08'09"E	134.81
8	S 89°08'09"E	134.81
9	S 89°08'09"E	134.81
10	S 89°08'09"E	134.81
11	S 89°08'09"E	134.81
12	S 89°08'09"E	134.81
13	S 89°08'09"E	134.81
14	S 89°08'09"E	134.81
15	S 89°08'09"E	134.81
16	S 89°08'09"E	134.81
17	S 89°08'09"E	134.81
18	S 89°08'09"E	134.81
19	S 89°08'09"E	134.81
20	S 89°08'09"E	134.81
21	S 89°08'09"E	134.81
22	S 89°08'09"E	134.81
23	S 89°08'09"E	134.81
24	S 89°08'09"E	134.81
25	S 89°08'09"E	134.81
26	S 89°08'09"E	134.81
27	S 89°08'09"E	134.81
28	S 89°08'09"E	134.81
29	S 89°08'09"E	134.81
30	S 89°08'09"E	134.81
31	S 89°08'09"E	134.81
32	S 89°08'09"E	134.81
33	S 89°08'09"E	134.81
34	S 89°08'09"E	134.81
35	S 89°08'09"E	134.81
36	S 89°08'09"E	134.81
37	S 89°08'09"E	134.81
38	S 89°08'09"E	134.81
39	S 89°08'09"E	134.81
40	S 89°08'09"E	134.81
41	S 89°08'09"E	134.81
42	S 89°08'09"E	134.81
43	S 89°08'09"E	134.81
44	S 89°08'09"E	134.81
45	S 89°08'09"E	134.81
46	S 89°08'09"E	134.81
47	S 89°08'09"E	134.81
48	S 89°08'09"E	134.81
49	S 89°08'09"E	134.81
50	S 89°08'09"E	134.81
51	S 89°08'09"E	134.81
52	S 89°08'09"E	134.81
53	S 89°08'09"E	134.81
54	S 89°08'09"E	134.81
55	S 89°08'09"E	134.81
56	S 89°08'09"E	134.81
57	S 89°08'09"E	134.81
58	S 89°08'09"E	134.81
59	S 89°08'09"E	134.81
60	S 89°08'09"E	134.81
61	S 89°08'09"E	134.81
62	S 89°08'09"E	134.81
63	S 89°08'09"E	134.81
64	S 89°08'09"E	134.81
65	S 89°08'09"E	134.81
66	S 89°08'09"E	134.81
67	S 89°08'09"E	134.81
68	S 89°08'09"E	134.81
69	S 89°08'09"E	134.81
70	S 89°08'09"E	134.81
71	S 89°08'09"E	134.81
72	S 89°08'09"E	134.81
73	S 89°08'09"E	134.81
74	S 89°08'09"E	134.81
75	S 89°08'09"E	134.81
76	S 89°08'09"E	134.81
77	S 89°08'09"E	134.81
78	S 89°08'09"E	134.81
79	S 89°08'09"E	134.81
80	S 89°08'09"E	134.81
81	S 89°08'09"E	134.81
82	S 89°08'09"E	134.81
83	S 89°08'09"E	134.81
84	S 89°08'09"E	134.81
85	S 89°08'09"E	134.81
86	S 89°08'09"E	134.81
87	S 89°08'09"E	134.81
88	S 89°08'09"E	134.81
89	S 89°08'09"E	134.81
90	S 89°08'09"E	134.81
91	S 89°08'09"E	134.81
92	S 89°08'09"E	134.81
93	S 89°08'09"E	134.81
94	S 89°08'09"E	134.81
95	S 89°08'09"E	134.81
96	S 89°08'09"E	134.81
97	S 89°08'09"E	134.81
98	S 89°08'09"E	134.81
99	S 89°08'09"E	134.81
100	S 89°08'09"E	134.81

THIS POINT IS 8-01'-02"-22"-E 30.00'
FROM THE NORTHWEST CORNER OF THE SOUTHEAST QUARTER OF SECTION 32,
TOWNSHIP 18 SOUTH, RANGE 8 EAST OF THE HAYTSVILLE MERIDIAN, ETOWAH COUNTY, ALABAMA

ETOWAH COUNTY RECORDS CORPORATION