

SHARP SUBDIVISION FIRST ADDITION

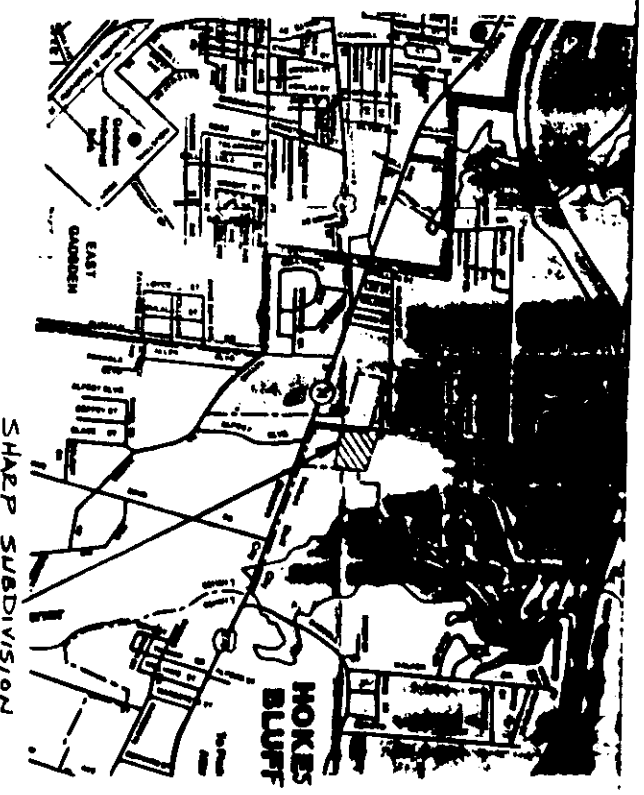
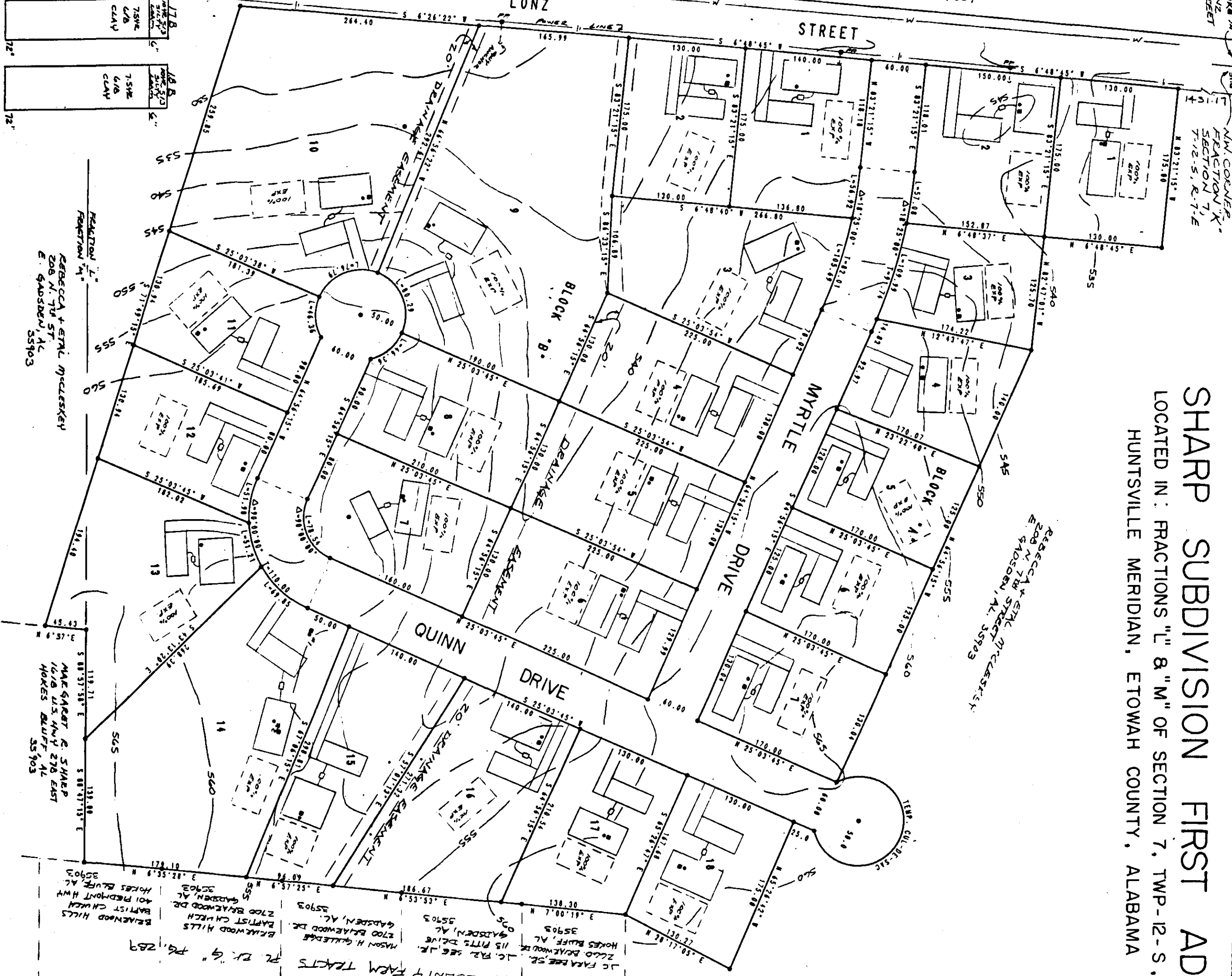
LOCATED IN: FRACTIONS "L" & "M" OF SECTION 7, TWP-12-S, RN-7-E
HUNTSVILLE MERIDIAN, ETOWAH COUNTY, ALABAMA

TRACT	AREA	OWNER	REMARKS
1A	1.00	SHARP	
2A	1.00	SHARP	
3A	1.00	SHARP	
4A	1.00	SHARP	
5A	1.00	SHARP	
6A	1.00	SHARP	
7A	1.00	SHARP	
8A	1.00	SHARP	
9A	1.00	SHARP	
10A	1.00	SHARP	
11A	1.00	SHARP	
12A	1.00	SHARP	
13A	1.00	SHARP	
14A	1.00	SHARP	
15A	1.00	SHARP	
16A	1.00	SHARP	
17A	1.00	SHARP	
18A	1.00	SHARP	
19A	1.00	SHARP	
20A	1.00	SHARP	
21A	1.00	SHARP	
22A	1.00	SHARP	
23A	1.00	SHARP	
24A	1.00	SHARP	
25A	1.00	SHARP	
26A	1.00	SHARP	
27A	1.00	SHARP	
28A	1.00	SHARP	
29A	1.00	SHARP	
30A	1.00	SHARP	
31A	1.00	SHARP	
32A	1.00	SHARP	
33A	1.00	SHARP	
34A	1.00	SHARP	
35A	1.00	SHARP	
36A	1.00	SHARP	
37A	1.00	SHARP	
38A	1.00	SHARP	
39A	1.00	SHARP	
40A	1.00	SHARP	
41A	1.00	SHARP	
42A	1.00	SHARP	
43A	1.00	SHARP	
44A	1.00	SHARP	
45A	1.00	SHARP	
46A	1.00	SHARP	
47A	1.00	SHARP	
48A	1.00	SHARP	
49A	1.00	SHARP	
50A	1.00	SHARP	

SCALE 1" = 40 FT.
FILE NO. 91-121

Soil Descriptions

TRACT	SOIL DESCRIPTION
1A	SHALY SAND
2A	SHALY SAND
3A	SHALY SAND
4A	SHALY SAND
5A	SHALY SAND
6A	SHALY SAND
7A	SHALY SAND
8A	SHALY SAND
9A	SHALY SAND
10A	SHALY SAND
11A	SHALY SAND
12A	SHALY SAND
13A	SHALY SAND
14A	SHALY SAND
15A	SHALY SAND
16A	SHALY SAND
17A	SHALY SAND
18A	SHALY SAND
19A	SHALY SAND
20A	SHALY SAND
21A	SHALY SAND
22A	SHALY SAND
23A	SHALY SAND
24A	SHALY SAND
25A	SHALY SAND
26A	SHALY SAND
27A	SHALY SAND
28A	SHALY SAND
29A	SHALY SAND
30A	SHALY SAND
31A	SHALY SAND
32A	SHALY SAND
33A	SHALY SAND
34A	SHALY SAND
35A	SHALY SAND
36A	SHALY SAND
37A	SHALY SAND
38A	SHALY SAND
39A	SHALY SAND
40A	SHALY SAND
41A	SHALY SAND
42A	SHALY SAND
43A	SHALY SAND
44A	SHALY SAND
45A	SHALY SAND
46A	SHALY SAND
47A	SHALY SAND
48A	SHALY SAND
49A	SHALY SAND
50A	SHALY SAND



STATE OF ALABAMA
ETOWAH COUNTY

SHARP SUBDIVISION, INC.
1225 North Street
Huntsville, Alabama 35894
505-585-3000

NOTARY PUBLIC
THOMAS J. HARRIS
1225 North Street
Huntsville, Alabama 35894
505-585-3000

NOTARY PUBLIC
THOMAS J. HARRIS
1225 North Street
Huntsville, Alabama 35894
505-585-3000

THIS 22nd DAY OF December, 1994

STATE OF ALABAMA
ETOWAH COUNTY

NOTARY PUBLIC
THOMAS J. HARRIS
1225 North Street
Huntsville, Alabama 35894
505-585-3000

NOTARY PUBLIC
THOMAS J. HARRIS
1225 North Street
Huntsville, Alabama 35894
505-585-3000