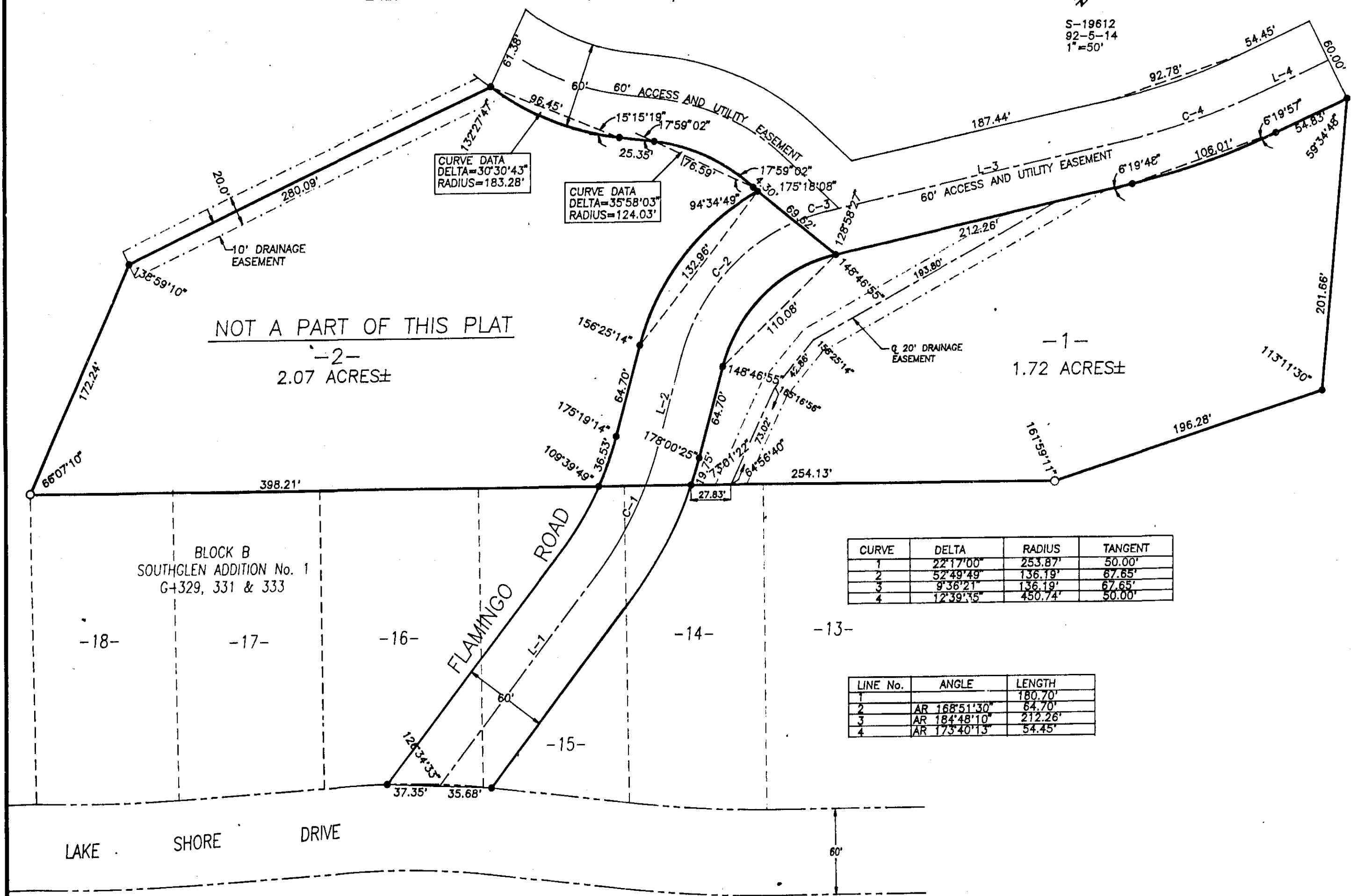


SOUTHGLEN ADDITION No. 3 PLAT BOOK K PAGE 7
A PORTION OF THE NW 1/4-SE 1/4 AND THE SW1/4-SE1/4
SECTION 32, T-12-S, R-6-E
RAINBOW CITY, ALABAMA

S-19612
92-5-14
1"=50'



NOT A PART OF THIS PLAT
-2-
2.07 ACRES±

-1-
1.72 ACRES±

CURVE	DELTA	RADIUS	TANGENT
1	22°17'00"	253.87'	50.00'
2	52°49'49"	136.19'	87.65'
3	9°43'21"	136.19'	87.65'
4	12°39'15"	450.74'	50.00'

LINE No.	ANGLE	LENGTH
1	AR 188°31'10"	180.70'
2	AR 184°48'10"	54.70'
3	AR 173°40'13"	54.45'

STATE OF ALABAMA
COUNTY OF ETOWAH:
I, BENNETT TUCKER, A REGISTERED ENGINEER AND LAND SURVEYOR OF GADSDEN, ALABAMA, HEREBY CERTIFY THAT ALL PARTS OF THIS SURVEY AND DRAWING HAVE BEEN COMPLETED IN ACCORDANCE WITH THE MINIMUM TECHNICAL STANDARDS FOR THE PRACTICE OF LAND SURVEYING IN THE STATE OF ALABAMA.
ACCORDING TO MY SURVEY THIS THE 10th DAY OF December 1992.
Bennett Tucker
BENNETT TUCKER, AL. REG. #5350
JONES, BAIR, WALDRUP & TUCKER, INC.
GADSDEN, ALABAMA

CERTIFICATE OF APPROVAL OF THE FINAL PLAT BY THE PLANNING COMMISSION
PURSUANT TO THE RAINBOW CITY SUBDIVISION REGULATIONS ALL THE REQUIREMENTS FOR APPROVAL HAVE BEEN FULFILLED. THIS FINAL PLAT WAS GIVEN FINAL APPROVAL BY THE CITY OF RAINBOW CITY PLANNING COMMISSION ON
John Watson 10/13/92
CHAIRMAN DATE

APPROVED BY: John W. Calhoun 10/15/92
UTILITY BOARD OF THE CITY OF RAINBOW CITY DATE

STATE OF ALABAMA
COUNTY OF ETOWAH:
THE UNDERSIGNED, ALLEGHENY LAND AND DEVELOPMENT COMPANY, INC., A CORPORATION DOES HEREBY RATIFY AND ADOPT THE WITHIN MAP AS BEING TRUE AND CORRECT. WE FURTHER CERTIFY THAT WE ARE THE OWNERS OF AND THE ONLY PERSONS HAVING ANY RIGHT, TITLE OR INTEREST IN THE LAND SHOWN ON THE PLAT OF ROSELAND PLANTATION AND THAT THE PLAT REPRESENTS A CORRECT SURVEY OF THE ABOVE DESCRIBED PROPERTY MADE WITH OUR CONSENT AND THAT WE HEREBY DEDICATE TO THE PUBLIC USE ALL THE STREETS AS SHOWN ON SAID PLAT. THE EASEMENTS AS SHOWN ON THE PLAT ARE CREATED FOR THE INSTALLATION AND MAINTENANCE OF THE PUBLIC UTILITIES AND/OR DRAINAGE. WE HEREBY GUARANTEE A CLEAR TITLE TO ALL THE LANDS SO DEDICATED FROM OURSELVES AND OUR HEIRS OR ASSIGNS FOREVER, AND HAVE CAUSED THE SAME TO BE RELEASED FROM ENCUMBRANCES SO THAT THE TITLE IS CLEAR EXCEPT AS SHOWN IN THE ABSTRACTOR'S CERTIFICATE.
THIS THE 6th DAY OF December 1992.
BY James M. Ashley PRESIDENT
BY Edna Cashio EDNA CASHIO TREASURER

CITY COUNCIL ACCEPTANCE OF PUBLIC DEDICATION
BE IT RESOLVED BY THE CITY COUNCIL OF THE CITY OF RAINBOW CITY, ALABAMA THAT THE DEDICATIONS SHOWN ON THE ATTACHED PLAT OF SOUTHGLEN ADDITION No. 3 ARE HEREBY ACCEPTED.
ADOPTED BY THE CITY COUNCIL OF THE CITY OF RAINBOW CITY, ALABAMA, THIS THE 17th DAY OF December 1992.
Mayor
ATTEST: Barbara A. Water CLERK

STATE OF ALABAMA
COUNTY OF ETOWAH:
I, Edna Cashio, AS NOTARY PUBLIC IN AND FOR SAID COUNTY AND STATE, HEREBY CERTIFY THAT JAMES M. ASHLEY, AS PRESIDENT AND EDNA CASHIO, AS TREASURER, HAS SIGNED THE WITHIN MAP AND WHOM IS KNOWN TO ME, ACKNOWLEDGED BEFORE ME ON THIS DATE, THAT BEING INFORMED OF THE CONTENTS, HAVE EXECUTED THE SAME VOLUNTARILY ON THE DAY THE SAME BEARS DATE.
WITNESS MY HAND AND SEAL THIS THE 17th DAY OF December 1992.
MY COMMISSION EXPIRES My Commission Expires May 1, 1993
Edna Cashio
NOTARY PUBLIC

THIS SUBDIVISION MEETS THE APPROVAL OF ETOWAH CO. HEALTH DEPARTMENT. SUBJECT TO CERTAIN CONDITIONS OF APPROVAL AND/OR LOT DELETIONS ON FILE WITH SAID HEALTH DEPARTMENT, WHICH CONDITIONS ARE MADE A PART OF THIS APPROVAL AS IF SET OUT HEREIN.
APPROVED BY: Amy M. Foy 12/10/92
ETOWAH CO. HEALTH DEPT. DATE

OFFICE OF PROBATE JUDGE
I hereby certify that this instrument was filed in office for record on the 21st day of Dec 92
at Rainbow City, AL, and was duly recorded on the 21st day of Dec 92
Barry M. Jenkins
Judge of Probate, Etowah County, Ala. Total 12.50

Restrictions
Plat Book K Page 7
Misc. 269 Page 192