

The Charles Project, as proposed, has caused the land adjacent to the village site to be eroded, and the City of Southside, Alabama, is hereby notified that the City of Southside, Alabama, and the County of Etowah, Alabama, will be held liable for any damage to the public's health and safety caused by the erosion of the soil in the village site if the City of Southside, Alabama, and the County of Etowah, Alabama, do not take the steps herein directed to the soil of the village site.

Board of Health
 State of Alabama
 County of Etowah
 Public Health Department
 Division of Water Treatment and Sewerage
 Approved and sealed in the presence of: *John R. Smith*
 Health Officer
William R. Powell
 County Commissioner

The undersigned, as authorized by the Board of Health, Public Health Department, County of Etowah, Alabama, do hereby certify that the following is a true and correct copy of the Village Site Plan as shown on the map attached hereto, and that the same is a true and correct copy of the original on file in the office of the Health Officer, County of Etowah, Alabama, and that the same is a true and correct copy of the original on file in the office of the County Commissioner, County of Etowah, Alabama, this 15th day of September, 1989.

The undersigned, as authorized by the Board of Health, Public Health Department, County of Etowah, Alabama, do hereby certify that the following is a true and correct copy of the Village Site Plan as shown on the map attached hereto, and that the same is a true and correct copy of the original on file in the office of the Health Officer, County of Etowah, Alabama, and that the same is a true and correct copy of the original on file in the office of the County Commissioner, County of Etowah, Alabama, this 15th day of September, 1989.

Board of Health
 State of Alabama
 County of Etowah
 Public Health Department
 Division of Water Treatment and Sewerage
 Approved and sealed in the presence of: *John R. Smith*
 Health Officer
William R. Powell
 County Commissioner

NOTE: This subdivision secures the approval of the Etowah County Engineer, Public Health Department, County of Etowah, Alabama, this 15th day of September, 1989.

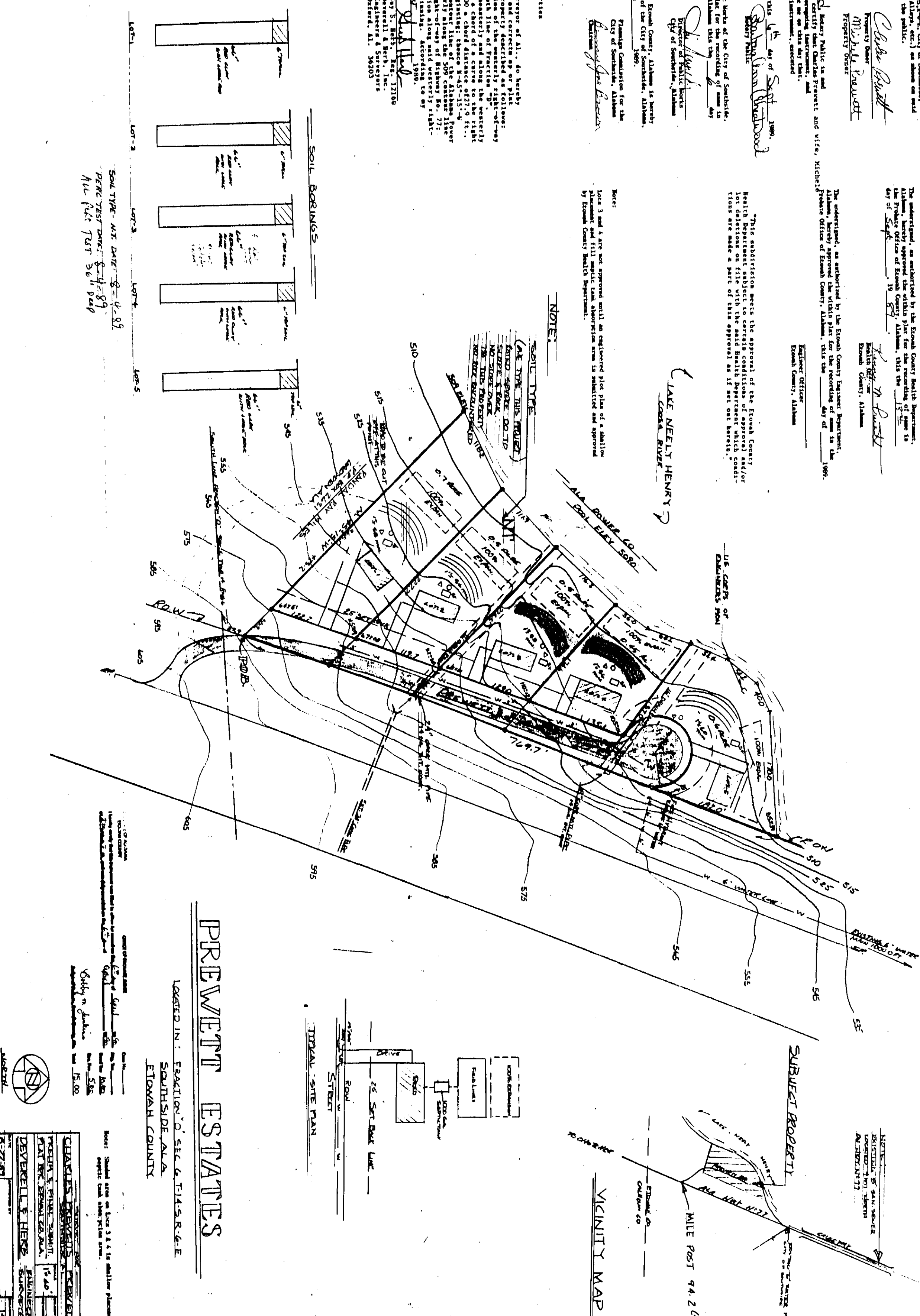
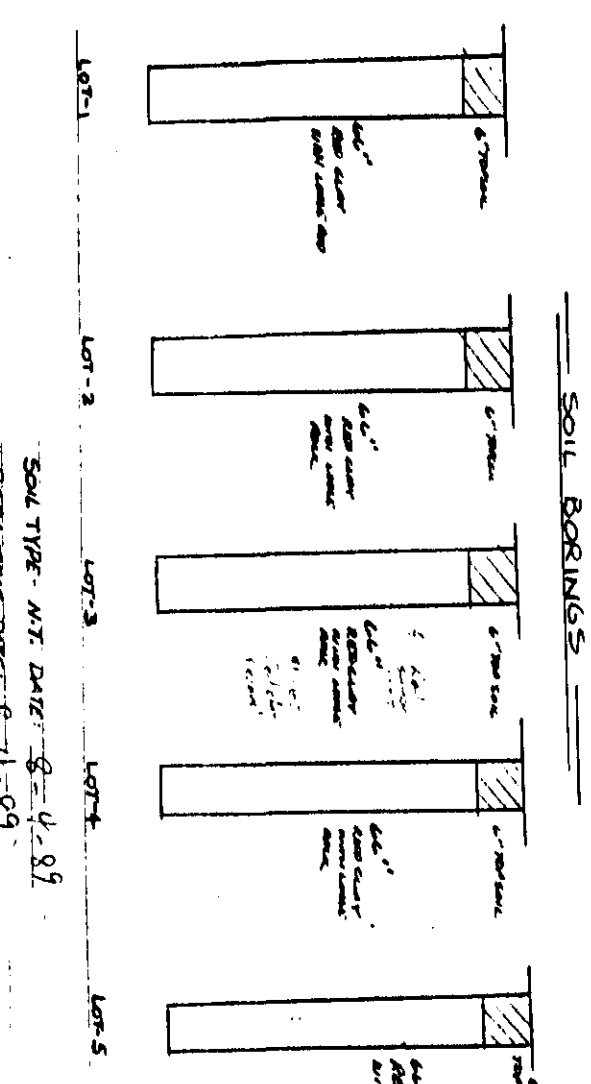
The undersigned, as authorized by the Etowah County Engineer, Public Health Department, County of Etowah, Alabama, do hereby certify that the following is a true and correct copy of the Village Site Plan as shown on the map attached hereto, and that the same is a true and correct copy of the original on file in the office of the County Engineer, County of Etowah, Alabama, this 15th day of September, 1989.

Etowah County Engineer
 State of Alabama
 County of Etowah
 Public Health Department
 Division of Water Treatment and Sewerage
 Approved and sealed in the presence of: *James H. Powell*
 County Engineer

NOTE: This subdivision secures the approval of the Etowah County Engineer, Public Health Department, County of Etowah, Alabama, this 15th day of September, 1989.

The undersigned, as authorized by the Etowah County Engineer, Public Health Department, County of Etowah, Alabama, do hereby certify that the following is a true and correct copy of the Village Site Plan as shown on the map attached hereto, and that the same is a true and correct copy of the original on file in the office of the County Engineer, County of Etowah, Alabama, this 15th day of September, 1989.

Etowah County Engineer
 State of Alabama
 County of Etowah
 Public Health Department
 Division of Water Treatment and Sewerage
 Approved and sealed in the presence of: *James H. Powell*
 County Engineer



PREWETT ESTATES
 LOGGED IN: EFACTION, O. SEA & TIES, R.C.E
 SOUTHSHIDE, ALA.
 ETOWAH COUNTY

OWNER:
 CHARLES P. PREWETT
 1540
 STATE ST.
 SOUTHSHIDE, ALA. 36906
 PH: 205-631-1111

DESIGNER:
 EVERETT & HERR
 1520
 STATE ST.
 SOUTHSHIDE, ALA. 36906
 PH: 205-631-1111

DATE:
 8-22-89

SCALE:
 1" = 100' (AS SHOWN)
 1" = 200' (VICINITY MAP)