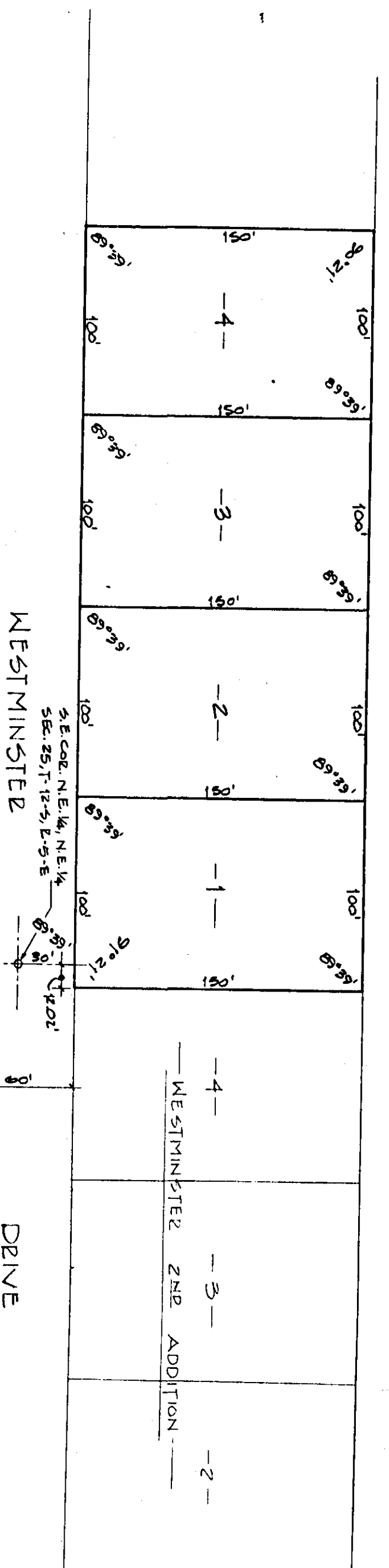
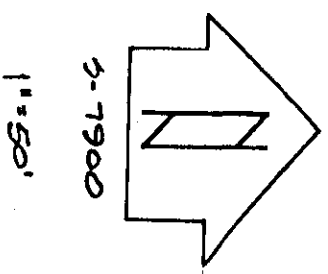


Redirection
Doc # Misc. 1998-4104



WESTMINSTER 3RD ADDITION

A PORTION OF NE 1/4, NE 1/4 SEC. 25, T-12-S, R-5-E AND A PORTION
OF LOT NO 25, BLK NO 12 OF GRAND PARK ADD. E-137
A DEVELOPMENT OF LOVEMAN REALTY COMPANY

STATE OF ALABAMA:
COUNTY OF ETOWAH:

I, MADALDEUP JONES, A REGISTERED ENGINEER AND LAND SURVEYOR OF GADSDEN, ALABAMA, HEREBY CERTIFY THAT THE FOREGOING IS A TRUE AND CORRECT MAP OR PLAN OF THE LANDS HEREIN SHOWN, ACCORDING TO MY SURVEY THIS THE 18TH DAY OF NOV. 1988.

Madaldep Jones
MADALDEUP JONES, LICENSE # 40081
JONES, BLAIZ, MADALDEUP & TUCKER INC.

STATE OF ALABAMA:
COUNTY OF ETOWAH:

I, Barbara Tucker, A NOTARY PUBLIC IN AND FOR SAID COUNTY AND STATE, HEREBY CERTIFY THAT E. BAREBY LOVEMAN AND WIFE JUDI L. LOVEMAN AS OWNERS HAVE SIGNED THE WITHIN MAP, AND WHO ARE KNOWN TO ME AS HAVING LEDGED BEFORE ME ON THIS DATE, THAT BEING INFORMED OF THE CONTENTS, THEY EXECUTED THE SAME VOLUNTARILY ON THE DAY THE SAID BEARS DATE.

MY COMMISSION EXPIRES 3-31-91
Barbara Tucker
A NOTARY PUBLIC

APPROVED BY: *Randy M. Luster*
RANDOM CITY PLANNING COMMISSION

11-17-88
DATE

APPROVED BY: *Kenneth M. Luster*
ETOWAH COUNTY HEALTH DEPARTMENT

12-13-88
DATE

STATE OF ALABAMA:
COUNTY OF ETOWAH:
WE, E. BAREBY LOVEMAN AND WIFE, JUDI L. LOVEMAN, AS OWNERS OF THE LANDS HEREIN SHOWN DO HEREBY RATIFY AND ADOPT THE WITHIN MAP AS BEING TRUE AND CORRECT.
THIS THE 18TH DAY OF NOV. 1988.
E. Bareby Loveman BY: *Judi L. Loveman*

NOTARY PUBLIC
11-17-88
DATE

12-13-88
DATE