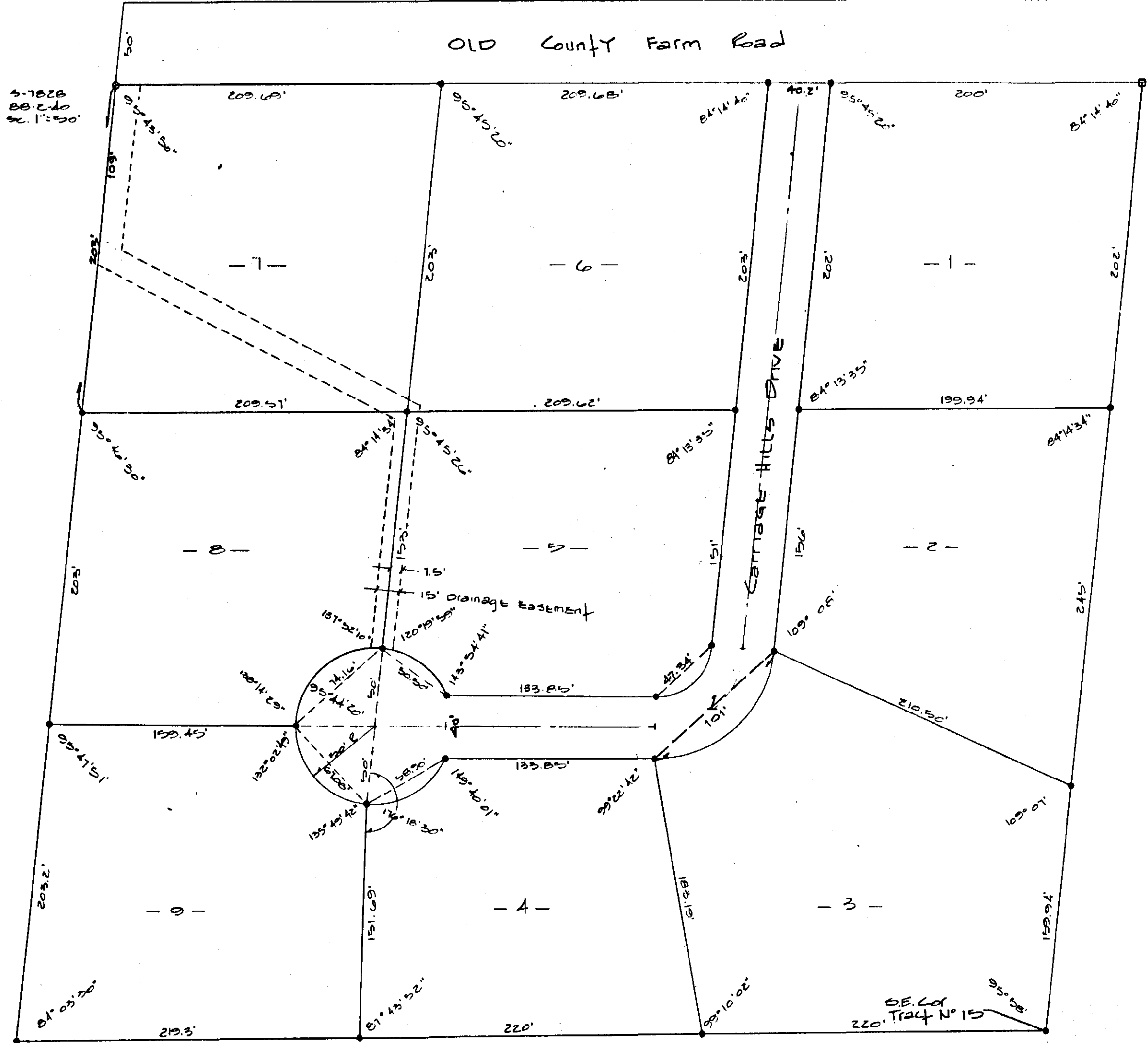
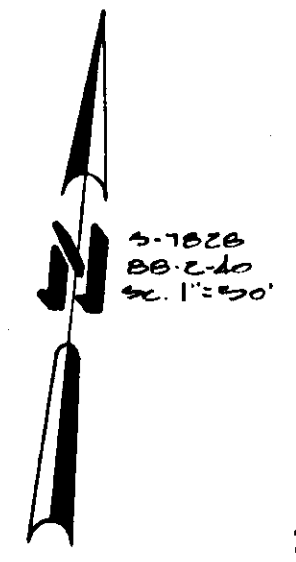


Plat J Page 92  
Amendment of Restrictions  
Misc 263 Page 135



**CARRIAGE HILLS**  
**A REARRANGEMENT OF TRACT No. 15**  
**ETOWAH COUNTY FARM TRACTS**  
**G-289**

STATE OF ALABAMA  
COUNTY OF ETOWAH  
I, BENNETT TUCKER, A REGISTERED ENGINEER AND LAND SURVEYOR  
OF THE STATE OF ALABAMA, HEREBY CERTIFY THAT THE FOREGOING IS A TRUE  
AND CORRECT MAP OR PLAT OF THE LANDS HEREIN SHOWN.

ACCORDING TO MY SURVEY THIS THE 16<sup>TH</sup> DAY OF August 1988

*Bennett Tucker*  
BENNETT TUCKER, ALA. REG. No. 6350  
JONES, BLAIR, WALDRUP & TUCKER, INC.

APPROVED: *Rennie C. Kopy* DATE  
MAYOR - CITY OF GLENCOE, ALA.  
APPROVED: *Kenny M. Pruitt* 8/16/88 DATE  
ETOWAH COUNTY HEALTH DEPT.

STATE OF ALABAMA  
COUNTY OF ETOWAH  
I, RON SUMMERALL AND THOMAS W. LEE, AS OWNERS OF THE LANDS  
HEREIN SHOWN DO HEREBY RATIFY AND ADOPT THE WITHIN MAP AS BEING  
TRUE AND CORRECT.

THIS THE 17<sup>TH</sup> DAY OF August 1988  
*Ron Summerall*  
BY: RON SUMMERALL  
*Thomas W. Lee*  
BY: THOMAS W. LEE

NOTE:  
OWNER IS REQUIRED TO CONTACT ETOWAH COUNTY HEALTH DEPT.  
FOR PERMIT PRIOR TO INITIATING ANY CONSTRUCTION ON ANY LOT.

STATE OF ALABAMA  
COUNTY OF ETOWAH  
I, *Michelle O'lane*, A NOTARY PUBLIC IN AND FOR SAID COUNTY AND STATE,  
HEREBY CERTIFY THAT RON SUMMERALL AND THOMAS W. LEE AS OWNERS, HAVE SIGNED  
THE WITHIN MAP, AND WHO ARE KNOWN TO ME, ACKNOWLEDGED BEFORE ME ON THIS DATE,  
THAT BEING INFORMED OF THE CONTENTS, THEY EXECUTED THE SAME VOLUNTARILY, ON  
THIS DAY THE SAME BEARS DATE.

WITNESS MY HAND AND SEAL THIS THE 17<sup>TH</sup> DAY OF August 1988  
BY COMMISSION EXPIRES JULY 5, 1992  
*Michelle O'lane*  
MY COMMISSION EXPIRES A NOTARY PUBLIC

THE STATE OF ALABAMA  
ETOWAH COUNTY  
OFFICE OF PROBATE JUDGE  
I hereby certify that this instrument was filed in office for record on this day of August 1988  
at *Glencoe, Ala.*, and was duly recorded in book *310* page *280*  
Judge of Probate, Etowah County, Ala. Total *4400*

