

J# 710  
70

# HILERS

REARRANGEMENT OF LOT # 14  
BLOCK 3 OF OAK HILLS REARR.  
BLOCKS 1-2-3-4 (PARTS) "F" 99, 101 &  
PART OF LOT # 5 OF COUNTRY CLUB  
DISTRICT DIVISION # 3, "E" - 207

THE STATE OF ALABAMA  
SAY NOW COUNTY  
I, DONALD R. JARRELL, a Registered Surveyor of Alabama, do hereby certify that the foregoing map is a true and correct copy of the original map filed in my office on August 27, 1985, and was duly recorded on the 28th day of August, 1985.

STATE OF ALABAMA:  
COUNTY OF ETOWAH:

I, DONALD R. JARRELL, A REGISTERED SURVEYOR OF ALABAMA, HEREBY CERTIFY THAT THE FOREGOING IS A TRUE MAP OF THE LANDS AS SHOWN, ACCORDING TO MY SURVEY THIS THE 27<sup>th</sup> DAY OF AUGUST 1985.

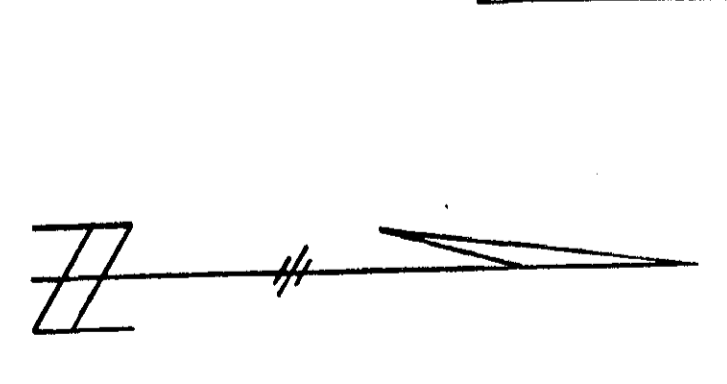
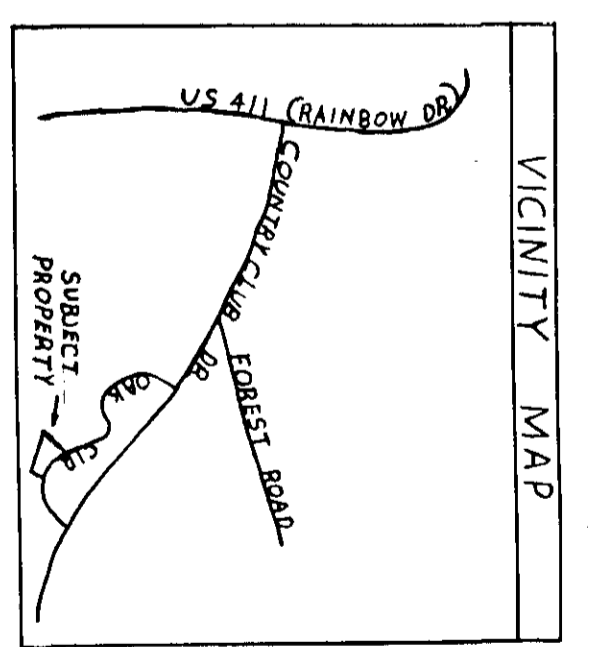
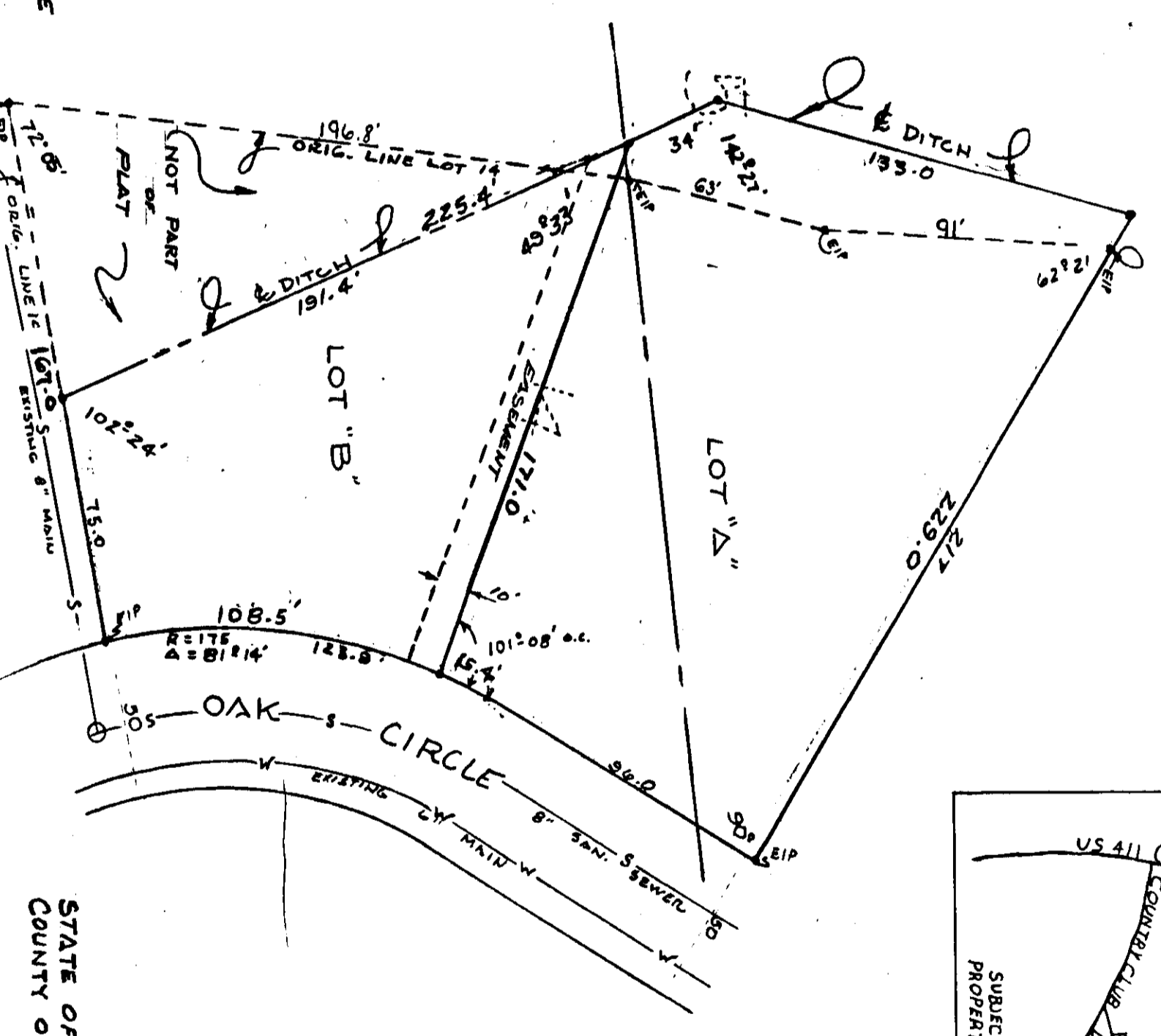
Donald R. Jarrell  
DONALD R. JARRELL #3979  
AND SURVEYOR



GAYLORD HILERS  
OWNER

I, GAYLORD HILERS, OWNER OF THE LANDS ENGRAINED WITHIN THE FOREGOING PLAT, DO HEREBY RATIFY, CONFIRM AND ADOPT THE SAME AS BEING TRUE AND CORRECT. THIS THE 28<sup>th</sup> DAY OF AUGUST, 1985.

GAYLORD HILERS  
OWNER  
NOTARY PUBLIC



STATE OF ALABAMA:  
COUNTY OF ETOWAH:

WE THE UNDERSIGNED HEREBY APPROVE THE SUBDIVISION REPRESENTED BY THE FOREGOING MAP WITH THE EXCEPTIONS AS NOTED, IF ANY.

DATE 9/24/85  
DATE 9/24/85  
DATE 9/24/85  
Joseph P. Blaine  
PLANNING COMMISSION  
ENGINEER  
James T. Calhoun  
ETOWAH CO. HEALTH DEPT.

ROBERTS & SON, INC.  
F. O. BOX 1322  
LITTLE ROCK, ARKANSAS 72202  
PHONE 524-1111  
FACILE & ACCURATE  
PRINTING, REPRODUCTION, LITHOGRAPHY, SIGNAGE, ALABAMA