

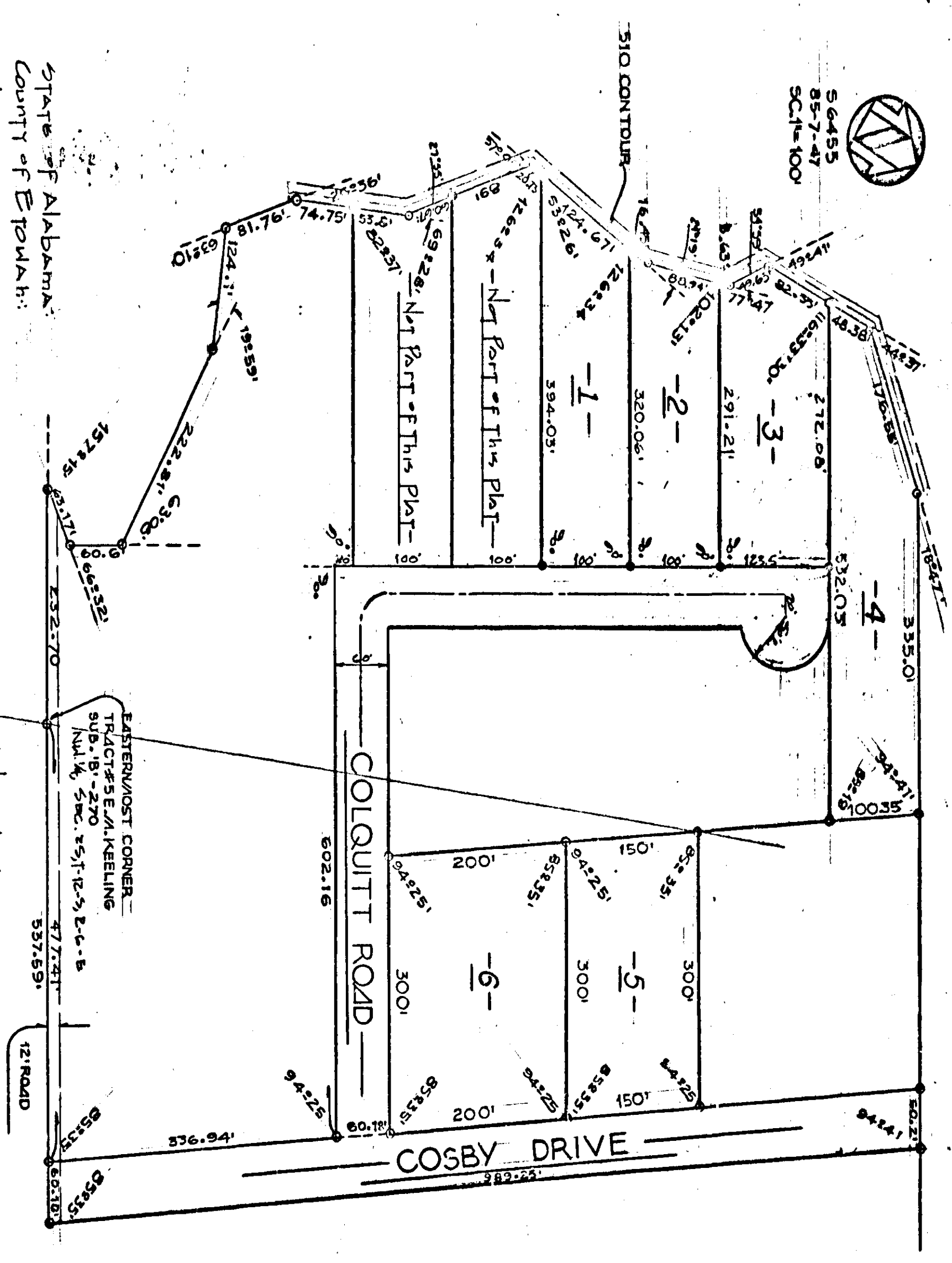
PLANNING 40-105-42148

# COSBY ESTATES

— GLENCOE, ALABAMA —

PLAT 1 Page 69

See Misc. 133 Page 935



State of Alabama:  
County of Etowah:  
I, Bennett Tucker, A Registered Engineer and Land Surveyor of Glensden, Ala. Herby certify that the foregoing is a true and correct map or plat of the lands herein shown. According to my survey this the 23<sup>RD</sup> day of August 1985.

Danny J. Waggon  
Bennett Tucker, Ala. Reg. No. 5350  
Jones, Blair, Wadrip and Tucker Inc.

State of Alabama:  
County of Etowah:  
We, Danny J. Waggon wife Lucretia Waggon, Billy J. Waggon wife Claudette Waggon, Richard C. Cosby wife Nancy Cosby, Bobby E. Cosby and wife Nancy Cosby, as owners of the lands herein shown, do hereby ratify and adopt the within map as being true and correct. This the 23<sup>RD</sup> day of August 1985.

By: Danny J. Waggon By: Lucretia Waggon  
Danny J. Waggon Lucretia Waggon  
 By: Billy J. Waggon By: Claudette Waggon  
Billy J. Waggon Claudette Waggon  
 By: Richard C. Cosby By: Charlotte Cosby  
Richard C. Cosby Charlotte Cosby  
 By: Bobby E. Cosby By: Nancy Cosby  
Bobby E. Cosby Nancy Cosby

State of Alabama:  
County of Etowah:  
I, Dale D. Dyer, As Notary Public in and for said county and state hereby certify that Danny J. Waggon and wife Lucretia Waggon, Billy J. Waggon and wife Claudette Waggon, Richard C. Cosby and wife Charlotte Cosby, Bobby E. Cosby and wife Nancy Cosby have signed the within map, and who are known to me, acknowledged before me on this date, that being informed of the contents, they executed the same voluntarily on the day the same bears date. They witness my hand and seal this the 23<sup>RD</sup> day of August 1985.  
My Commission Expires 2/16/87  
A Notary Public

Approved: J. Colburn 8-23-85 Date  
Glenah County Health Department  
 Approved: James Lewis 9-1-85 Date  
City of Glensden, Alabama

