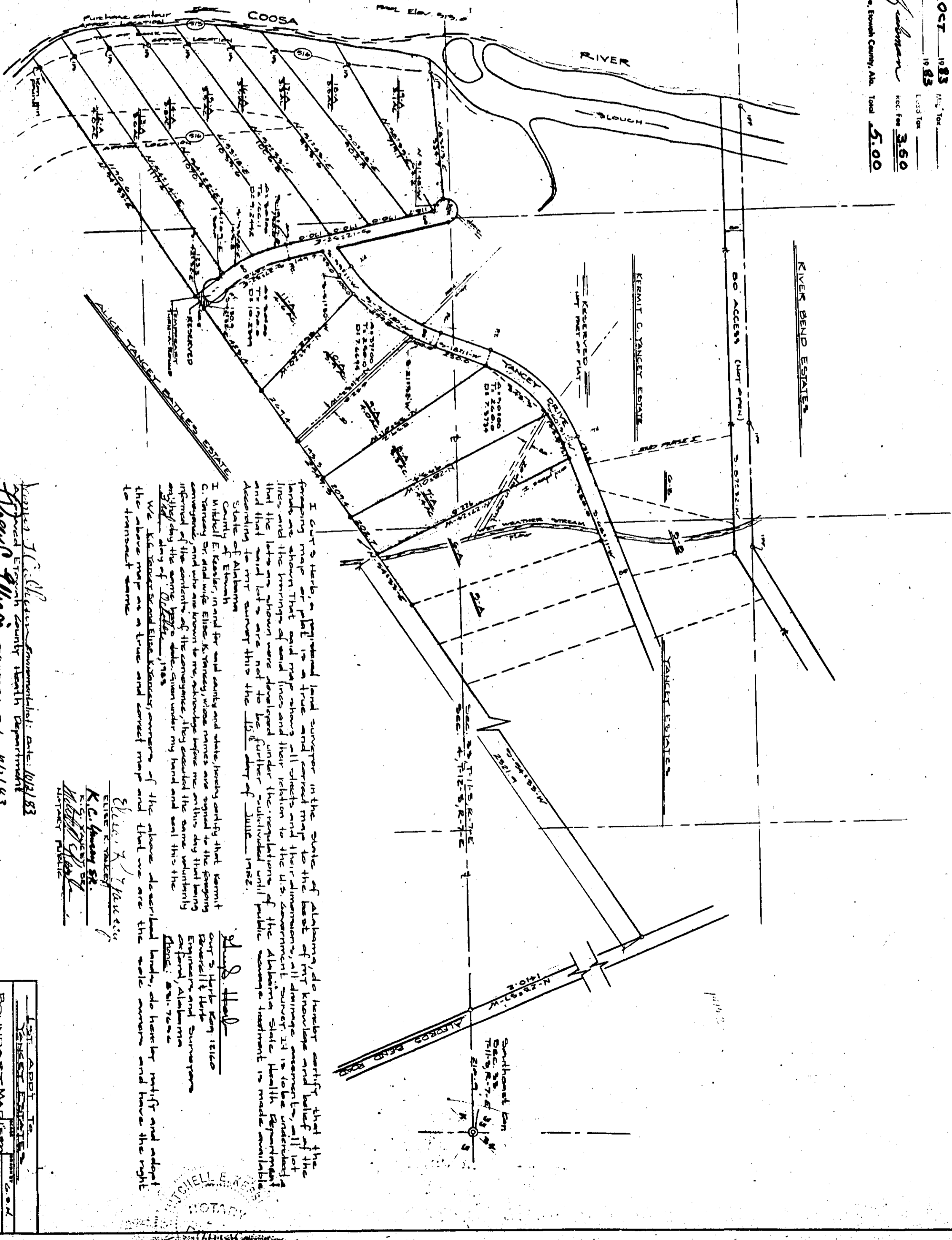
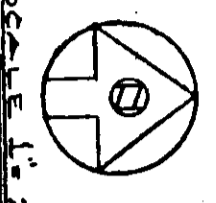


THE STATE OF ALABAMA
 DEWELL COUNTY
 Office of Probate Judge
 I hereby certify that this instrument was filed in my office for record on the 4th day of OCT 1983
 at 11:53 AM and was duly recorded on the 4th day of OCT 1983
 Judge of Probate, DeWell County, Ala. Total \$5.00

Case No. 1-52
 Fee \$5.00
 REC-10 3.60

1. This plat is a true and correct copy of the original plat on file in the office of the Probate Judge of DeWell County, Alabama, and was duly recorded on the 4th day of October, 1983.
2. This plat is a true and correct copy of the original plat on file in the office of the Probate Judge of DeWell County, Alabama, and was duly recorded on the 4th day of October, 1983.



I, Carl A. Harts, a registered land surveyor in the State of Alabama, do hereby certify that the foregoing map, plat and map showing all rights and interests in the land described herein, as well as the bearings and distances of the lines and the location of the Alabama State Health Department and that the same have been prepared under the regulations of the Alabama State Health Department and that the same are a true and correct copy of the original plat on file in the office of the Probate Judge of DeWell County, Alabama, and was duly recorded on the 4th day of October, 1983.

I, Mitchell E. DeWitt, Probate Judge of DeWell County, Alabama, do hereby certify that the above described land, as shown on the above described map, plat and map, is a true and correct copy of the original plat on file in the office of the Probate Judge of DeWell County, Alabama, and was duly recorded on the 4th day of October, 1983.

Approved: J. S. [Signature]
 DeWell County Health Department
 Date: 10/4/83

UNIT AREA	15-81-B
DEWELL AND HERSH	

RESTRICTIVE COVENANTS-REC. BOOK 124-PAGE 159

J-53

53