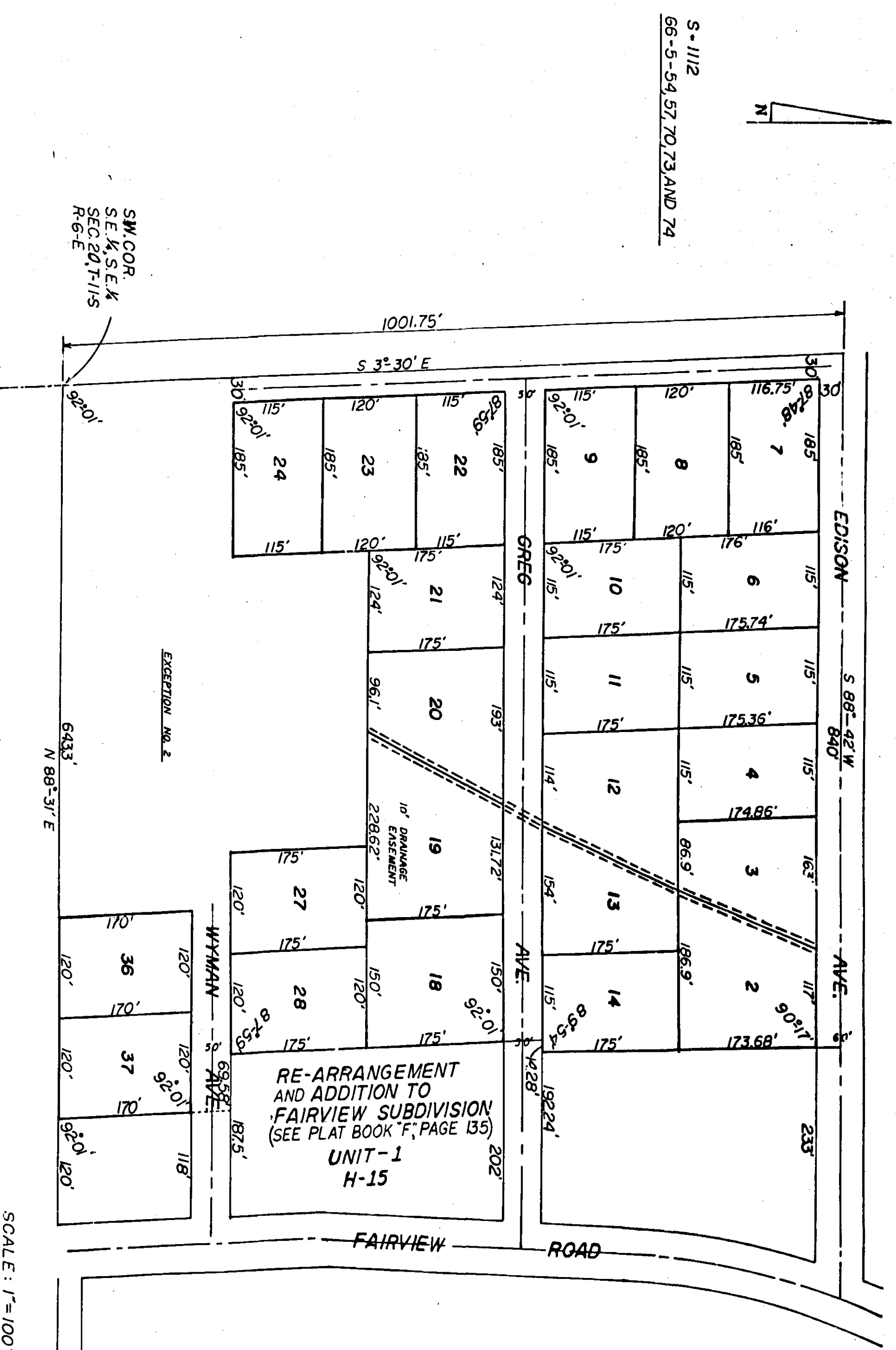


RE-ARRANGEMENT
AND ADDITION TO
FAIRVIEW SUBDIVISION
(SEE PLAT BOOK "G" PAGE 135)
UNIT 2



S-1112
66-5-54, 57, 70, 73 AND 74

SCALE: 1"=100'

STATE OF ALABAMA:
COUNTY OF ETOWAH:

I, JAMES T. JONES, A REGISTERED ENGINEER AND LAND SURVEYOR OF GADSDEN, ALABAMA, HEREBY CERTIFY THAT THE FOREGOING IS A TRUE AND CORRECT MAP OR PLAN OF THE LAND HEREIN SHOWN, ACCORDING TO MY SURVEY THIS THE 22ND DAY OF AUGUST 1987.

James T. Jones
REGISTERED LAND SURVEYOR
7807 E. WATSON & ASSOCIATES, INC.

STATE OF ALABAMA:
COUNTY OF ETOWAH:

I, M. D. WALDRUP, A NOTARY PUBLIC IN AND FOR SAID COUNTY AND STATE, HEREBY CERTIFY THAT JOEL V. OSBORN, BETTY JO OSBORN, HERBERT E. PENCE AND SUE R. PENCE, HAVE SIGNED THE WITHIN MAP AND WHO ARE KNOWN TO ME, ACKNOWLEDGED BEFORE ME ON THIS DATE, THAT BEING INFORMED OF THE CONTENTS, THEY EXECUTED THE SAME VOLUNTARILY, ON THE DAY THE SAME BEARS DATE.

M. D. Waldrup
NOTARY PUBLIC

APPROVED: *James T. Jones*
ETOWAH COUNTY HEALTH DEPARTMENT
3-20-79

APPROVED: *Robert S. Blaine*
CITY ENGINEER
CITY OF ETOWAH
3-20-79

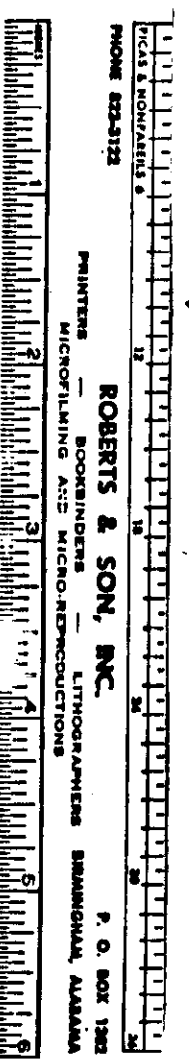
APPROVED: *Carl H. Beck*
PLANNING COMMISSION
CITY OF ETOWAH

BY: *Joel V. Osborn*
JOEL V. OSBORN
BY: *Betty Jo Osborn*
BETTY JO OSBORN
BY: *Herbert E. Pence*
HERBERT E. PENCE
BY: *Sue R. Pence*
SUE R. PENCE

STATE OF ALABAMA:
COUNTY OF ETOWAH:
WE, JOEL V. OSBORN, BETTY JO OSBORN, HERBERT E. PENCE AND SUE R. PENCE, AS OWNERS OF THE LAND HEREIN SHOWN, HEREBY CERTIFY THAT THE FOREGOING IS A TRUE AND CORRECT MAP OR PLAN OF THE LAND HEREIN SHOWN, ACCORDING TO OUR SURVEY THIS THE 22ND DAY OF MARCH, 1979.

THE STATE OF ALABAMA:
COUNTY OF ETOWAH:
I, *Robert S. Blaine*, CITY ENGINEER, DO HEREBY CERTIFY THAT THE FOREGOING IS A TRUE AND CORRECT MAP OR PLAN OF THE LAND HEREIN SHOWN, ACCORDING TO MY SURVEY THIS THE 22ND DAY OF MARCH, 1979.

BY: *Robert S. Blaine*
CITY ENGINEER
CITY OF ETOWAH
3-20-79



MY COMMISSION EXPIRES 2-16-83