

MATT & NANCY ACRES
SOUTHIDE, ALA.

Part Book "I" Page 166

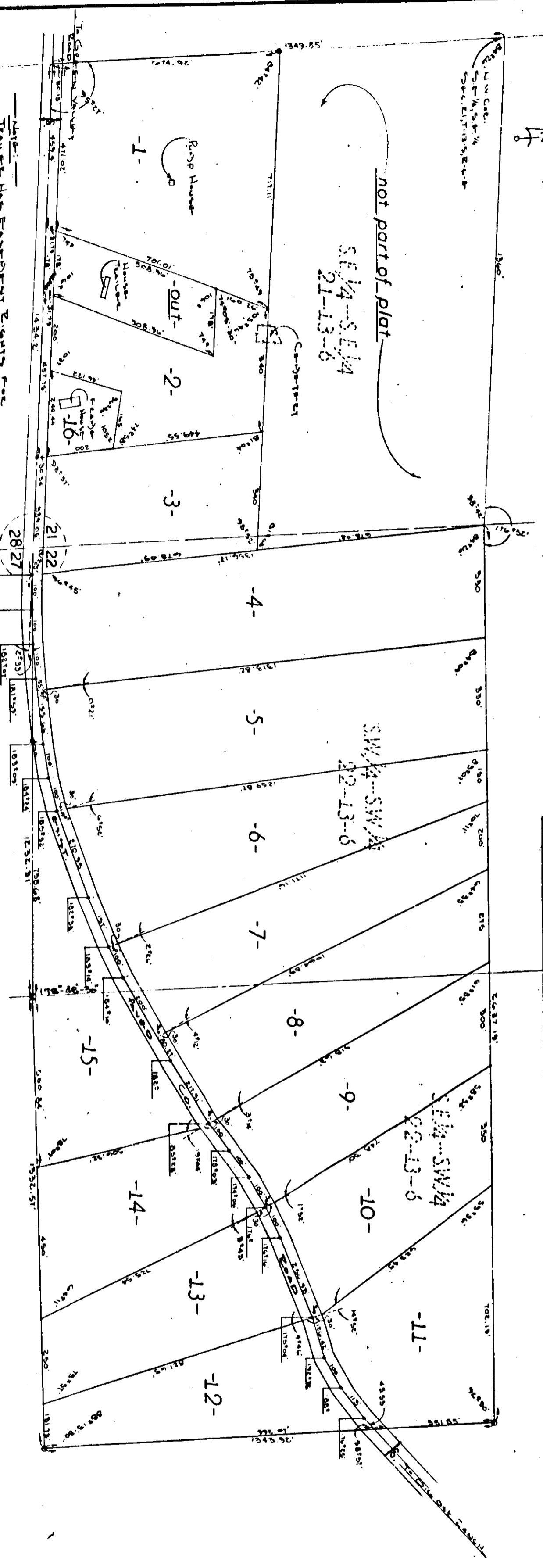


Table: —
Traverse has Equalized Bearings and
Equalized Water Line Accents. Tracts
No. 1 and Tract No. 16 has Equalized
Bearings and Equalized Water Line
Accents. Tracts No. 1 and No. 16.

State of Alabama:
County of Etowah:
I, Samuel T. Tucker, a Registered Surveyor & Land Surveyor,
of Etowah County, Ala., hereby certify that the foregoing is a true
& correct copy of the original as shown
to me by Samuel T. Tucker the Surveyor of the
County of Etowah, Ala.

Approved: James T. Collier
Treasurer
Health Dept.

Approved: Bobby Joe Brown
Treasurer
Surveyor, Ala.

11-3-78
Date

11-9-78
Date

147171 of Alabama
Treasurer
I hereby certify that the foregoing is a true
& correct copy of the original as shown
to me by Samuel T. Tucker the Surveyor of the
County of Etowah, Ala.

State of Alabama:
County of Etowah:
I, Samuel T. Tucker, a Registered Surveyor & Land Surveyor,
of Etowah County, Ala., hereby certify that the foregoing is a true
& correct copy of the original as shown
to me by Samuel T. Tucker the Surveyor of the
County of Etowah, Ala.

Approved: James T. Collier
Treasurer
Health Dept.

Approved: Bobby Joe Brown
Treasurer
Surveyor, Ala.

11-3-78
Date

11-9-78
Date

147171 of Alabama
Treasurer
I hereby certify that the foregoing is a true
& correct copy of the original as shown
to me by Samuel T. Tucker the Surveyor of the
County of Etowah, Ala.

