

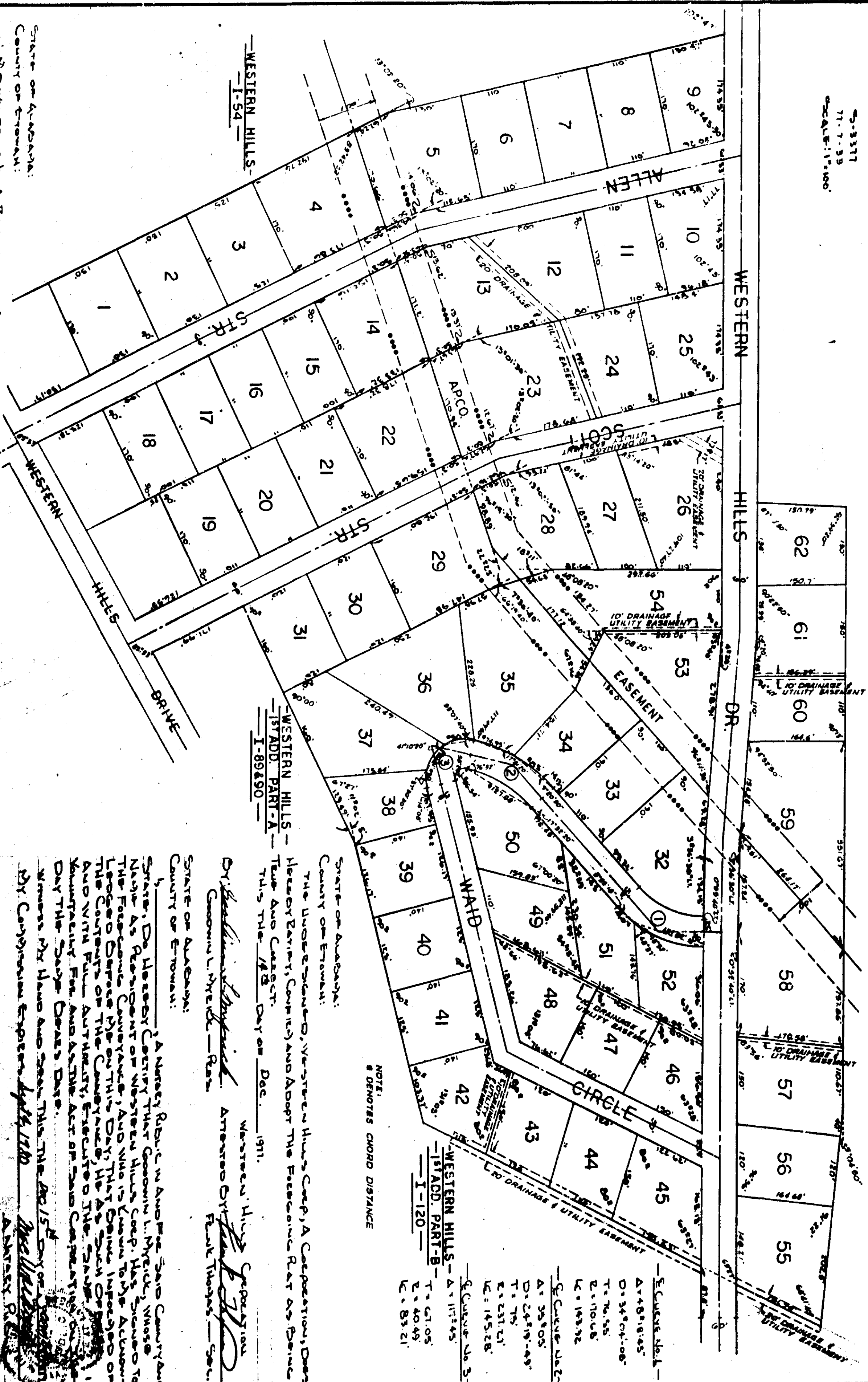
WESTERN HILLS 2ND ADDITION
SOUTHSIDE, ALA.

PLAT BOOK I PAGE 147

Restrictions
 Misc. 96 Page 315



2-3377
 77-7-33
 DEC 18-1910



WESTERN HILLS - A-11745
 1ST ADD. PART-B - T-6105
 I-120
 L-14526

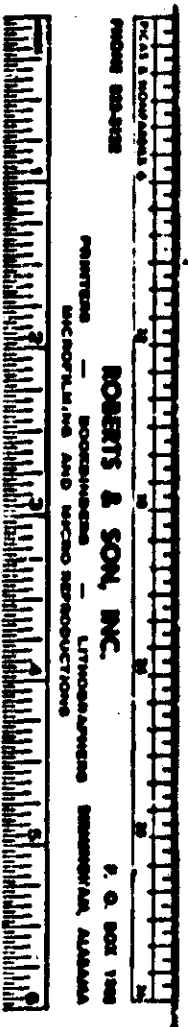
STATE OF ALABAMA:
 County of Etowah:
 The undersigned, Western Hills Corp, a Corporation, does hereby certify, confirm and adopt the foregoing plat as being true and correct.
 This the 18th Day of Dec. 1911.

Western Hills Corporation
 By *William H. Thomas* Attorney
 Edwin L. Hyde, Sec.

STATE OF ALABAMA:
 County of Etowah:
 I, D. H. Stoddard, a Registered Surveyor and Land Surveyor of Etowah, Ala. do hereby certify that the foregoing is a true and correct map or plat of the lands hereinafter shown.
 Witness my hand and seal this 15th Day of Dec. 1911.

Approved: *D. H. Stoddard*
 Etowah Surveyor

McCallister
 215 Warehouse St. Ann Beach, N.C.



5-3377