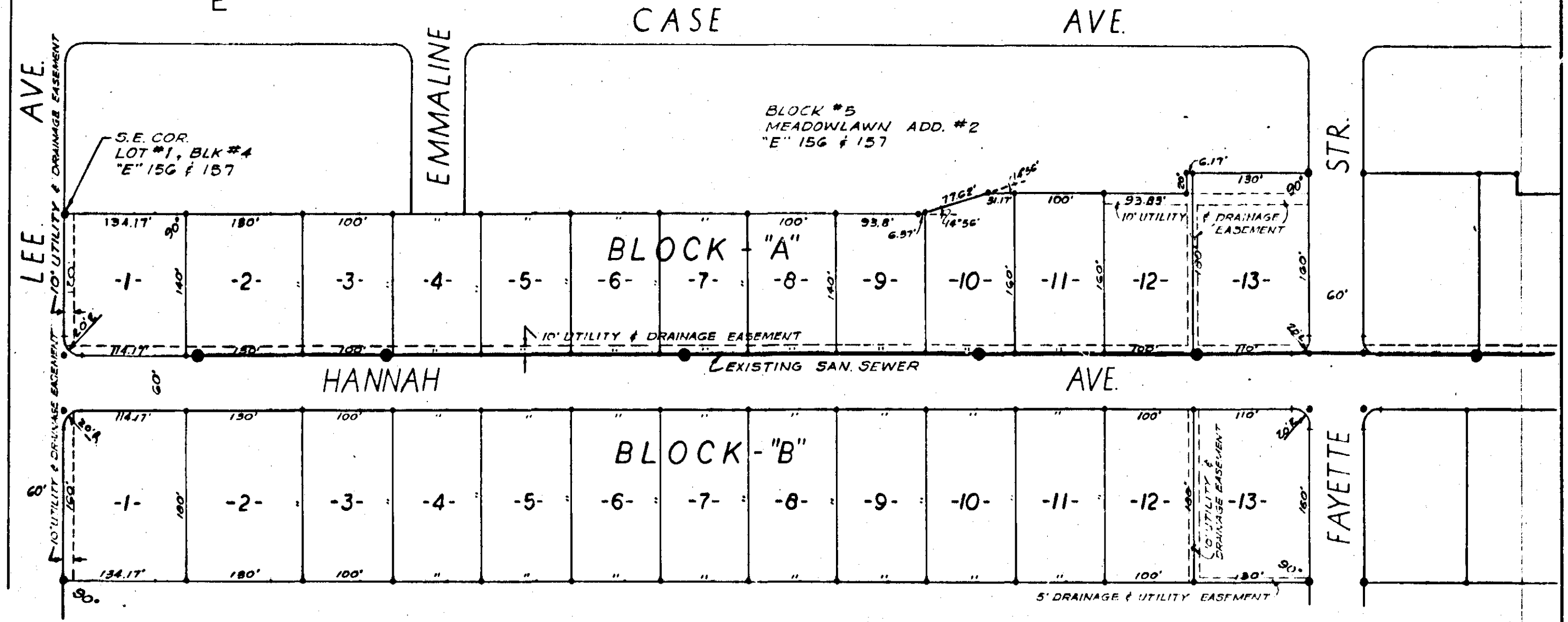


# MEADOWLAWN IV

ATTALLA, ALA.

PLAT BK. I PG. 129



ANNULMENT MISC. 95 PAGE 655

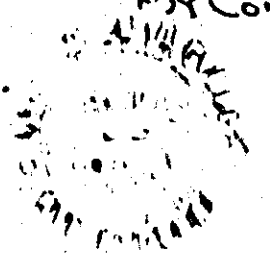
STATE OF ALABAMA:  
COUNTY OF ETOWAH:  
I, M.D. WALDRUP JR., A REGISTERED ENGINEER AND LAND SURVEYOR OF GADSDEN, ALABAMA HEREBY CERTIFY THAT THE FOREGOING IS A TRUE AND CORRECT MAP OR PLAT OF THE LANDS HEREIN SHOWN.  
ACCORDING TO MY SURVEY THIS THE 18<sup>TH</sup> DAY OF MARCH 1977

M.D. Waldrup Jr.  
M.D. WALDRUP JR. - ALA. REG. NO. 10081

THE STATE OF ALABAMA  
ETOWAH COUNTY  
OFFICE OF PROBATE JUDGE  
Case No. 50  
I hereby certify that this instrument was filed in office for record on the 5 day of July, 1977  
at Attalla, Ala., and was duly recorded on the 5 day of July, 1977  
Probate Judge, Etowah County, Ala. 15.00

STATE OF ALABAMA:  
COUNTY OF ETOWAH:  
I, Hannah Case Snell-Geove, As Owner of the Lands Herein Shown, Does Hereby Ratify and Adopt the Within Map as Being True and Correct.  
This the 18<sup>th</sup> DAY OF MARCH 1977.  
By: Hannah Case Snell-Geove  
Donald L. Collins  
Hannah Case Snell-Geove  
By: DONALD L. COLLINS, ATTORNEY IN FACT

STATE OF ALABAMA:  
COUNTY OF ETOWAH:  
I, Mac Waldrup, As Notary Public in and For Said County and State, Hereby Certify That Donald L. Collins, Attorney in Fact for Hannah Case Snell-Geove, Have Signed the Within Map, and Who are Known to Me Acknowledged Before Me on this Date, That Being Informed of the Contents, They Executed the Same Voluntarily on the Day the Same Bore Date.  
Witness My Hand and Seal this the 18<sup>th</sup> DAY OF March 1977.  
MY COMMISSION EXPIRES Sept 15, 1980. Mac Waldrup  
A NOTARY PUBLIC



APPROVED: Walter R. Savage 6-3-77  
ETOWAH COUNTY HEALTH DEPT. DATE

APPROVED: Tommy J. Smith 6-9-77  
ATTALLA CITY PLANNING COMM. DATE

RESTRICTIONS - MISC. BOOK 94 PAGE 77  
See Sec. 152-153