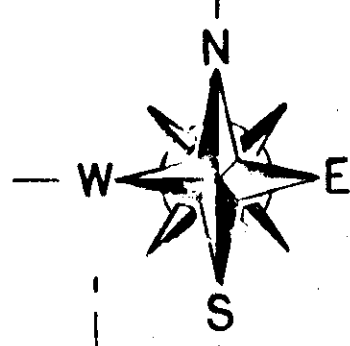
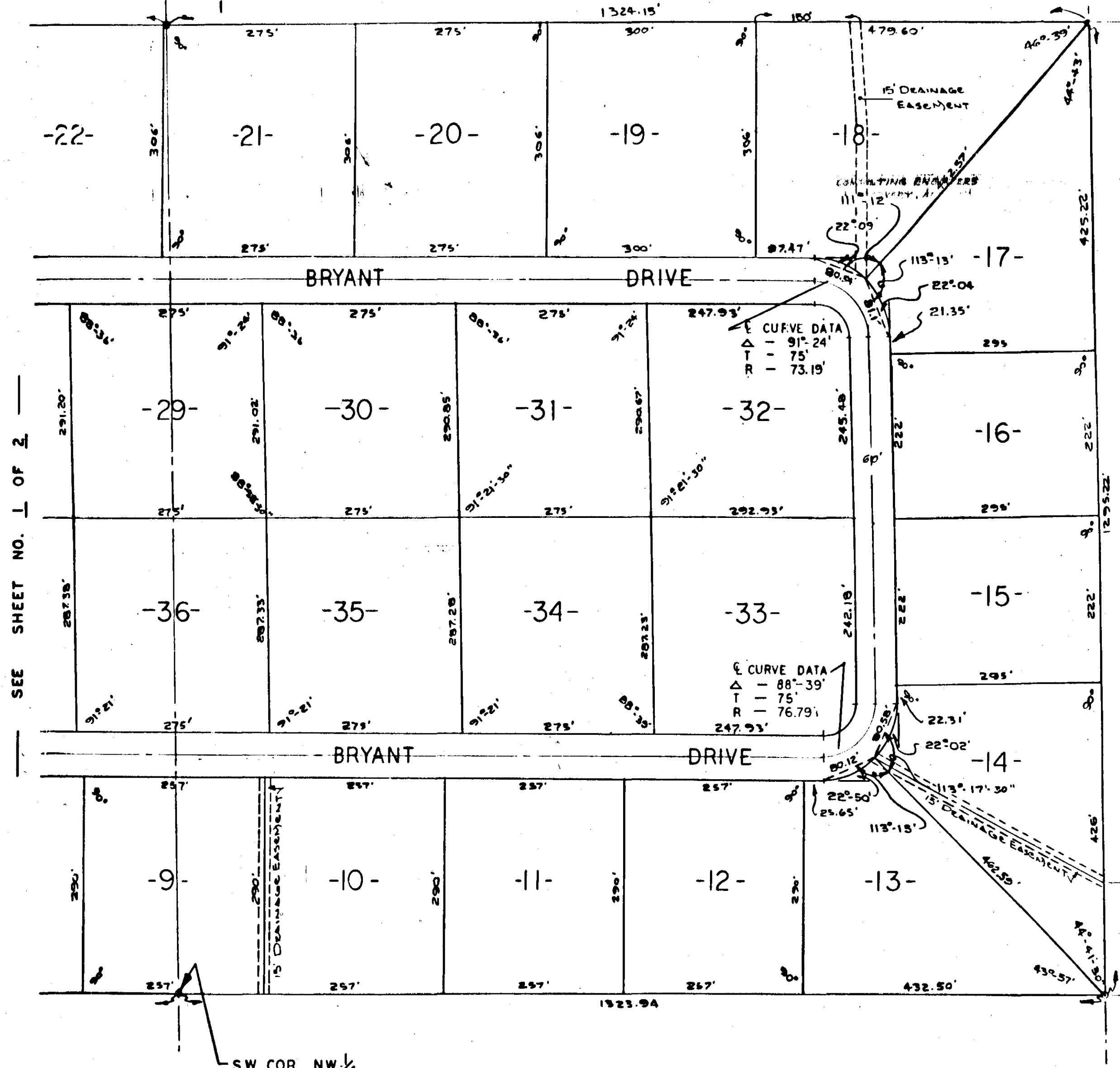


- SAND VALLEY ESTATES -
- ETOWAH COUNTY, ALABAMA -



S-3225
- 75-2-60 -
SCALE - 1"=100'



SEE SHEET NO. 1 OF 2

THE STATE OF ALABAMA }
ETOWAH COUNTY }
I hereby certify that this instrument was filed for record on the 23rd day of July, 1976, at 9:15 AM, and was duly recorded on the 23rd day of July, 1976, at 10:25 AM.
9.15
10.25