

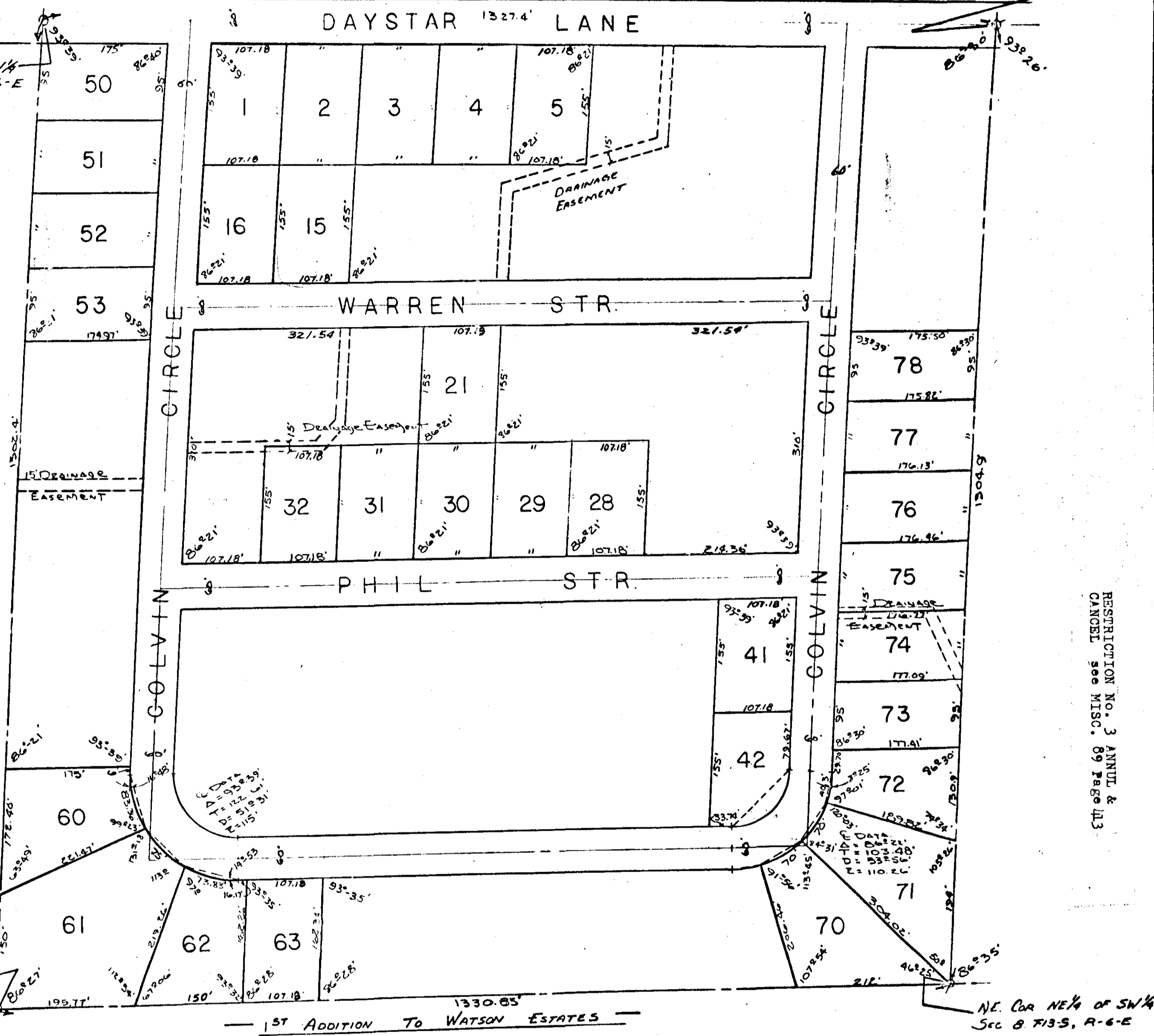
— VESTAVIA ESTATES —  
— SOUTHSIDE ALABAMA —

PLAT BOOK I PAGE 70

NW COR NE 1/4 OF SW 1/4  
Sec 8 T-13-S R-6-E

S-2966  
74-8-12  
SCALE 1"=100'

SW COR NE 1/4 OF SW 1/4  
Sec 8, T-13-S R-6-E



SE COR NE 1/4, SW 1/4  
Sec 8, T-13-S, R-6-E

NE COR NE 1/4 OF SW 1/4  
Sec 8 T-13-S, R-6-E

STATE OF ALABAMA  
COUNTY OF ETOWAH:

I, Bennett Tucker, A Registered Engineer & Land Surveyor of Gadsden, Ala. Hereby Certify That The Forgoing is a True & Correct Map of Plat of the Lands Herein Shown.

According to My Survey This the 17<sup>th</sup> Day of July 1975

*Bennett Tucker*  
Bennett Tucker, Ala. Reg. No. 5350

STATE OF ALABAMA  
COUNTY OF ETOWAH:

We, Stephen C. Held, Wife Phyllis Held, John W. Colvin Jr., Wife Linda Colvin, Bobby J. Warren, & Wife Geraldine P. Warren, As Owners of the Lands Herein Shown, Do Hereby Ratify & Adopt the Within Map as Being True & Correct.

This the 17<sup>th</sup> Day of July 1975.  
By: *Stephen C. Held* (Stephen C. Held) By: *John W. Colvin Jr.* (John W. Colvin Jr.) By: *Bobby J. Warren* (Bobby J. Warren)  
*Phyllis Held* (Phyllis Held) *Linda Colvin* (Linda Colvin) *Geraldine P. Warren* (Geraldine P. Warren)

Approved: *Hutton R. Savage*  
Etowah County  
Health Department

July 15, 1975  
DATE

Approved: *Marian J. Smith*  
Etowah County  
Engineering Department

7-17-75  
DATE

NOTE:

LOTS 6 THRU 14, 17 THRU 20,  
22 THRU 27, 33 THRU 40,  
43 THRU 49, 54 THRU 59,  
64 THRU 69, AND 79 THRU 82  
OMITTED.

STATE OF ALABAMA  
COUNTY OF ETOWAH:

I, Melba Hall, A Notary Public in & For Said County & State, Hereby Certify That Stephen C. Held, Wife Phyllis Held, John W. Colvin Jr., Wife Linda Colvin, Bobby J. Warren, & Wife Geraldine P. Warren, Have Signed the Within Map, and Who are Known to Me Acknowledged Before Me on the Date, That Being Informed of the Contents, They Executed the Same Voluntarily on the Day the Same Bore Date.

Witness My Hand & Seal This the 17<sup>th</sup> Day of July 1975  
My Commission Expires: October 2, 1976 *Melba Hall*  
& Notary Public

Notary Public Seal: *Melba Hall*  
Notary Public  
Etowah County, Ala.  
Exp. 10-2-76  
Total 2.85

S-2966

RESTRICTIONS MISC. 89 PAGE 341

RESTRICTION No. 3 ANNUAL &  
CANCEL see MISC. 89 PAGE 143

70