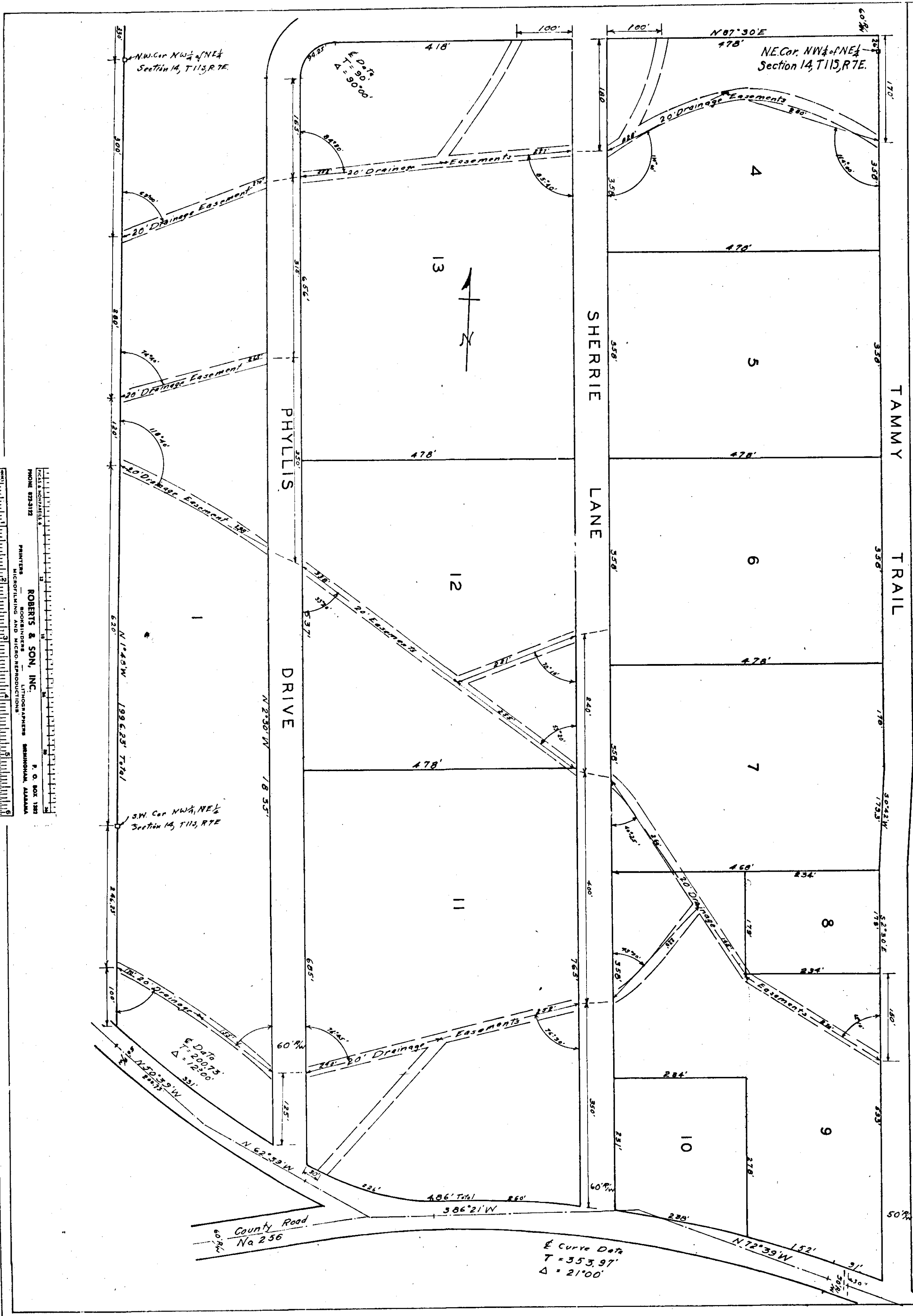


COUNTRY ESTATES

SHEET NO 2

H-138



ROBERTS & SON, INC.
SURVEYORS
MINNESOTA, ILLINOIS, IOWA, MISSOURI, WISCONSIN, INDIANA, OHIO, KENTUCKY, TENNESSEE, MISSISSIPPI, ALABAMA, GEORGIA, SOUTH CAROLINA, NORTH CAROLINA, VIRGINIA, WEST VIRGINIA, MARYLAND, DELAWARE, PENNSYLVANIA, NEW YORK, NEW JERSEY, CONNECTICUT, RHODE ISLAND, MASSACHUSETTS, VERMONT, NEW HAMPSHIRE, NEW MEXICO, ARIZONA, CALIFORNIA, NEVADA, IDAHO, MONTANA, WYOMING, UTAH, COLORADO, NEBRASKA, KANSAS, OKLAHOMA, TEXAS, MISSOURI, ILLINOIS, INDIANA, OHIO, KENTUCKY, TENNESSEE, MISSISSIPPI, ALABAMA, GEORGIA, SOUTH CAROLINA, NORTH CAROLINA, VIRGINIA, WEST VIRGINIA, MARYLAND, DELAWARE, PENNSYLVANIA, NEW YORK, NEW JERSEY, CONNECTICUT, RHODE ISLAND, MASSACHUSETTS, VERMONT, NEW HAMPSHIRE, NEW MEXICO, ARIZONA, CALIFORNIA, NEVADA, IDAHO, MONTANA, WYOMING, UTAH, COLORADO, NEBRASKA, KANSAS, OKLAHOMA, TEXAS