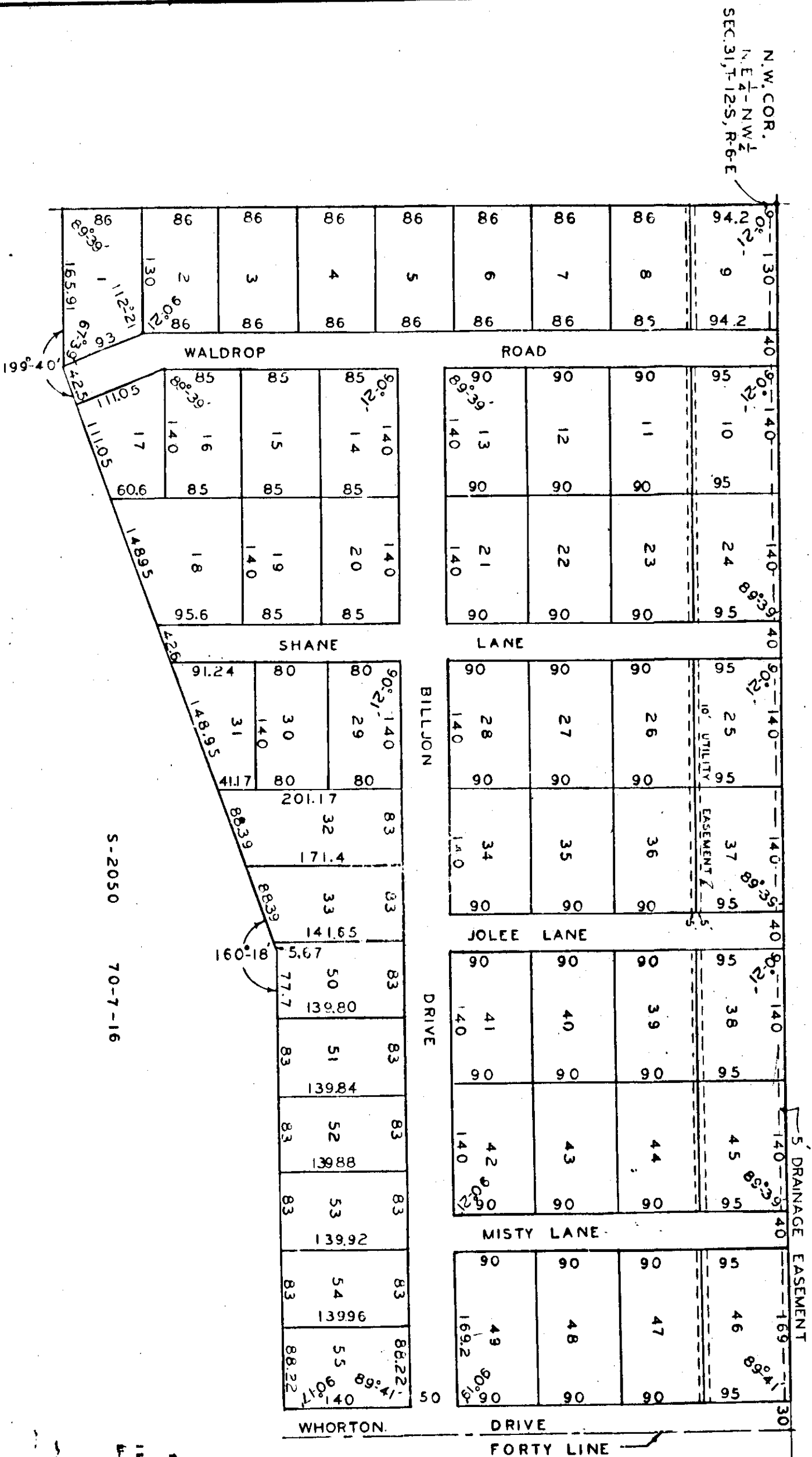


LYNWOOD SUBDIVISION

*For information see map 19
Page 46*

H. 130



SCALE 1" = 100'

*Corrected
Price 73-581*

STATE OF ALABAMA:
COUNTY OF ETOWAH:
I, DOYLE W. BLAIR, A REGISTERED ENGINEER AND LAND SURVEYOR
OF GADSDEN, ALABAMA, HEREBY CERTIFY THAT THE FOREGOING IS A
TRUE AND CORRECT MAP OR PLAT OF THE LAND HEREIN SHOWN,
ACCORDING TO MY SURVEY THIS THE 25TH DAY OF JANUARY, 1971.

Doyle W. Blair
DOYLE W. BLAIR, ALABAMA REG. NO. 4796
TROY E. WATFORD AND ASSOCIATES, INC.

STATE OF ALABAMA
COUNTY OF ETOWAH
I, *Walter R. ...* A NOTARY PUBLIC IN AND FOR SAID COUNTY
AND STATE, DO HEREBY CERTIFY THAT JOHN ROSICH, WHOSE
NAME AS PRESIDENT OF JOHN ROSICH ENTERPRISES, INC. IS SIGNED TO
THE FOREGOING CONVEYANCE, AND WHO IS KNOWN TO ME,
ACKNOWLEDGED BEFORE ME ON THIS DAY, THAT BEING INFORMED OF
THE CONTENTS OF THE CONVEYANCE, HE, AS SUCH OFFICER AND WITH
FULL AUTHORITY EXECUTED THE SAME VOLUNTARILY FOR AND AS
THE ACT OF SAID CORPORATION ON THE DAY THE SAME BECAME DATE.
WITNESS MY HAND AND SEAL THIS THE 25TH DAY OF JANUARY, 1971

Walter R. ...
NOTARY PUBLIC

STATE OF ALABAMA:
COUNTY OF ETOWAH:
THE UNDERSIGNED, JOHN ROSICH ENTERPRISES, INC., A CORPORATION
DOES HEREBY RATIFY, CONFIRM, AND ADOPT THE FOREGOING PLAT
AS BEING TRUE AND CORRECT.
THIS THE 25TH DAY OF JANUARY 1971

JOHN ROSICH ENTERPRISES, INC.
BY: *John Rosich*
JOHN ROSICH, PRESIDENT

ATTESTED BY:
JAMES A. TAYLOR
SECRETARY & TREASURER

APPROVED: *Walter R. ...* 3/18/71
ETOWAH COUNTY HEALTH DEPARTMENT

31 Aug 72
30
305
330

S-2050

ROBERTS & SON, INC.
NOTARY PUBLIC
1000 ...
BIRMINGHAM, ALABAMA