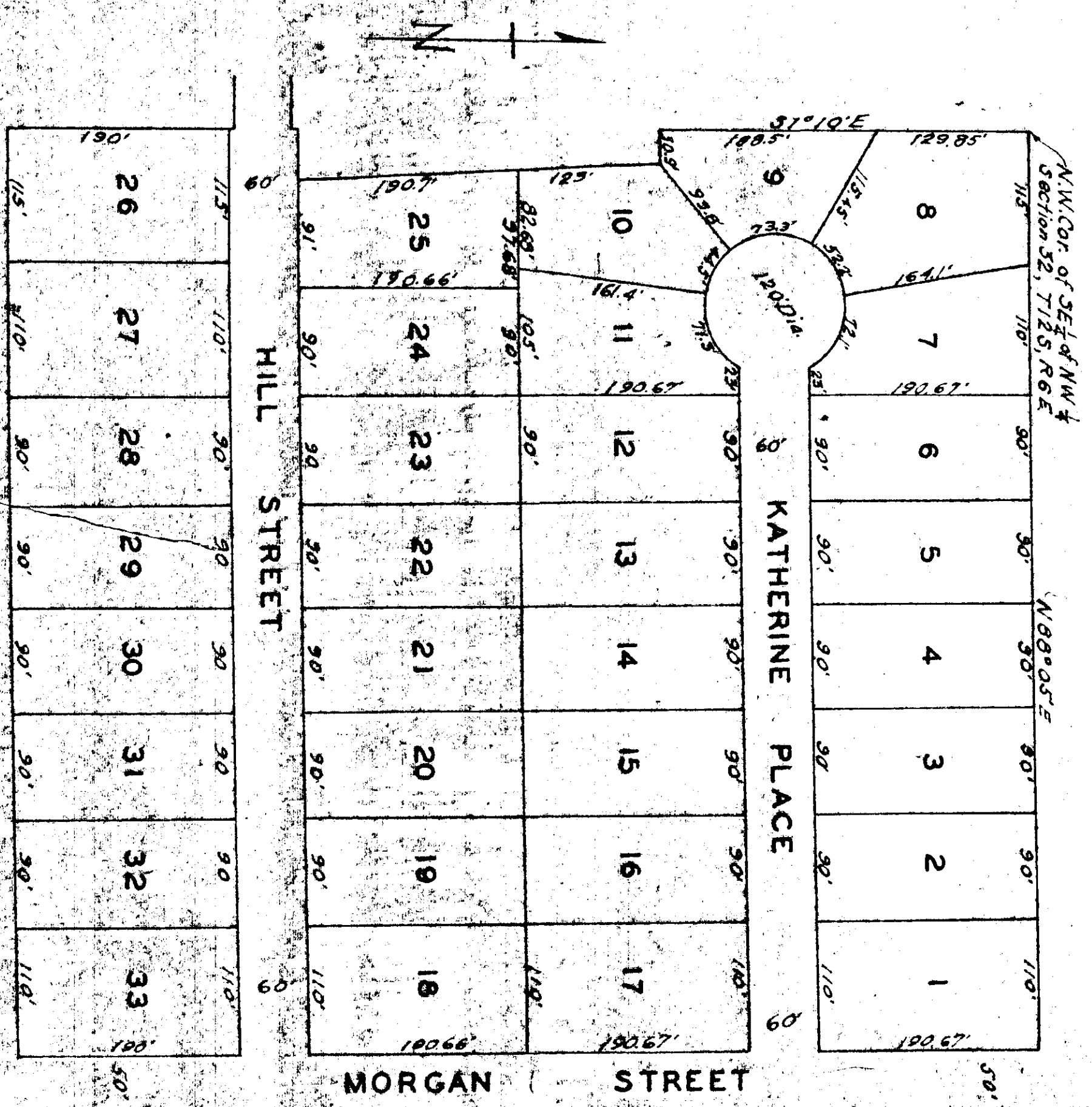


LARKWOOD ESTATES

Partition from L.S. G. S. 1921



STATE OF ALABAMA
COUNTY OF BROWARD

I, Robert L. Roberts, a registered civil engineer and surveyor of the State of Alabama, hereby certify that I have a true and correct copy of the land embraced within the foregoing plat, and that same is a true and correct copy of the original plat on file in my office at the office of the Surveyor General in the County of Broward, State of Alabama, at the City of Fort Lauderdale, Florida, on the 11th day of February, 1921.

Scale: 1" = 100'

STATE OF ALABAMA
COUNTY OF BROWARD

I, the undersigned owner of the land embraced within the foregoing plat, do hereby certify, confirm and acknowledge that the same is correct.

This 11th day of February, 1921.

STATE OF ALABAMA
COUNTY OF BROWARD

I, Robert L. Roberts, a registered civil engineer and surveyor of the State of Alabama, hereby certify that this plat is a true and correct copy of the original plat on file in my office at the office of the Surveyor General in the County of Broward, State of Alabama, at the City of Fort Lauderdale, Florida, on the 11th day of February, 1921.

STATE OF ALABAMA
COUNTY OF BROWARD

The undersigned hereby approves the foregoing plat and certifies that it is a true and correct copy of the original plat on file in my office at the office of the Surveyor General in the County of Broward, State of Alabama, at the City of Fort Lauderdale, Florida, on the 11th day of February, 1921.

Date: Feb 11 1921

[Faint, illegible text and markings at the bottom of the page, possibly a signature or additional notes.]