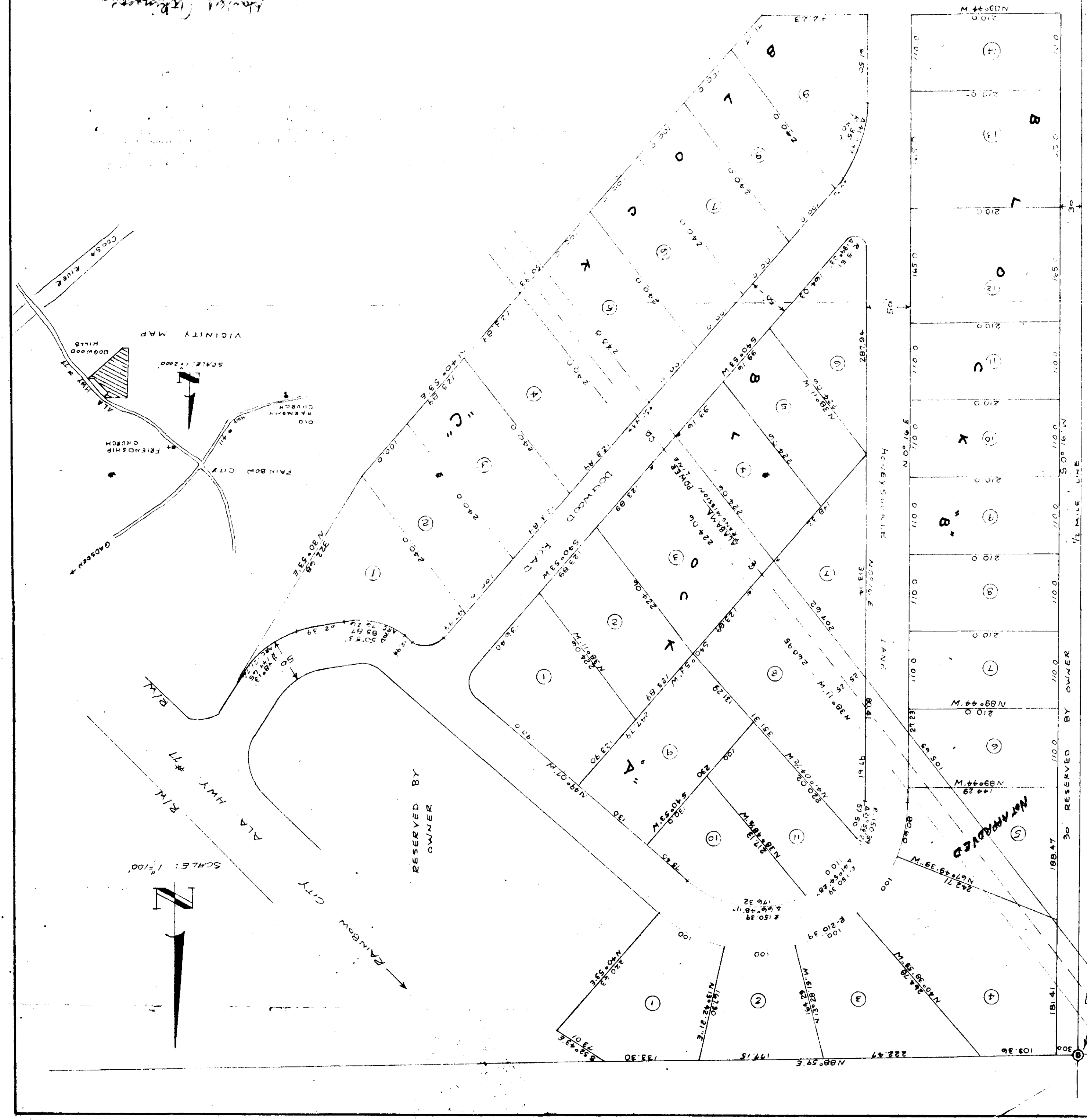


SECTOR ONE  
 ALLEGHENY LAND & DEV. CO'S  
 "DOGWOOD HILLS"  
 ETOWAH COUNTY, ALA.  
 GENERAL SURVEYS CO.  
 ONEONTA, ALA.  
 5 APT. 1969

James C. Bigham  
 James H. Bigham  
 Helen R. Bigham  
 December 29, 1968  
 except lot 5 not approved

James C. Bigham  
 Helen R. Bigham  
 December 29, 1968

James C. Bigham



THE STATE OF ALABAMA  
 COUNTY OF ETOWAH  
 I, the undersigned, Clerk of the County, do hereby certify that the foregoing is a true and correct copy of the original record of the same as the same appears in the records of the County of Etowah, Alabama.  
 JAMES C. BIGHAM  
 Clerk of the County

NW CORNER  
 SW 1/4 NE 1/4  
 SEC. 32, T. 22 N., R. 12 E.

Map 68