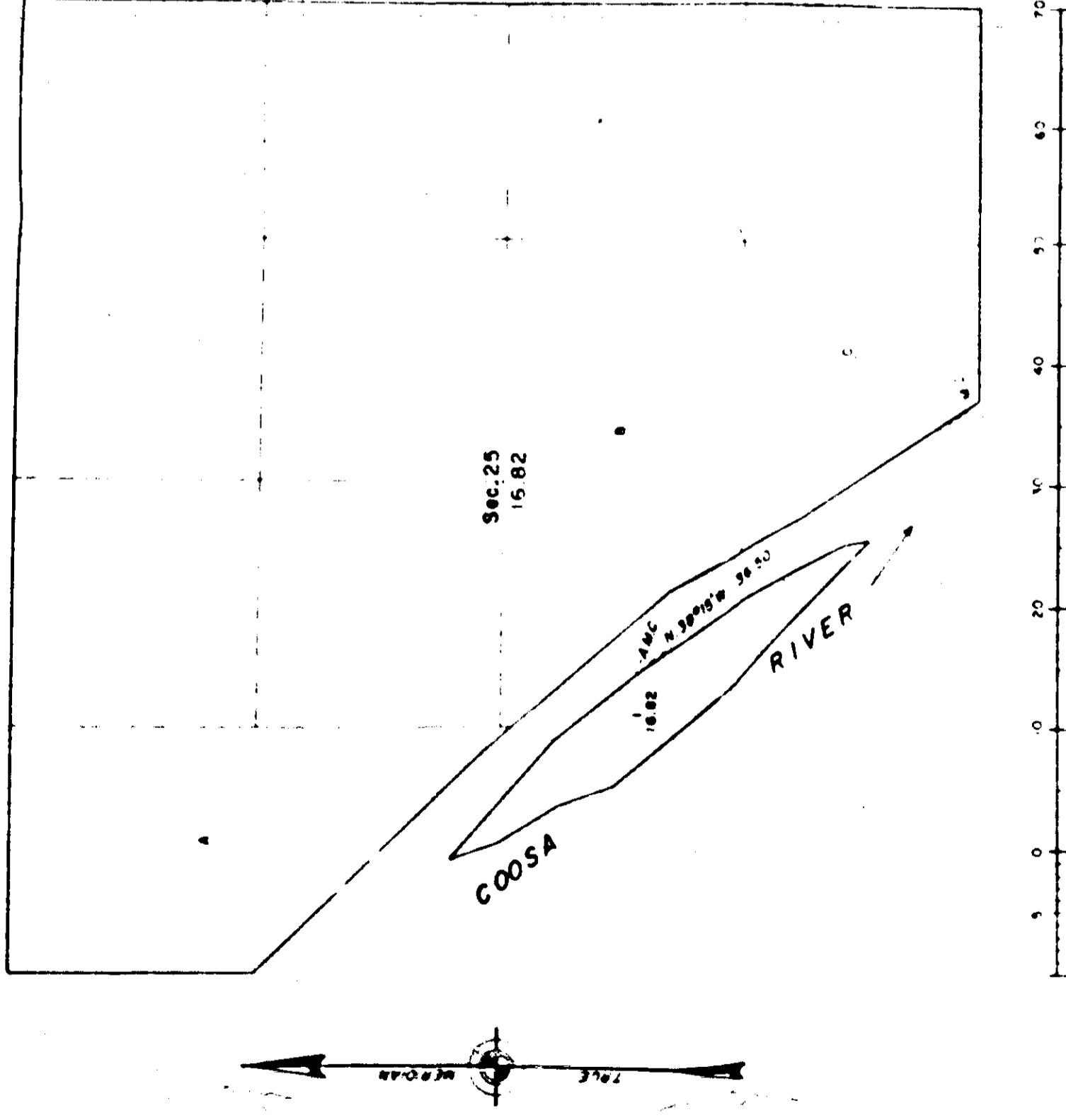


TOWNSHIP 12 SOUTH, RANGE 6 EAST, JONTSVILLE MERIDIAN, ALABAMA
SURVEY OF ISLA SECTION 25

Field Notes of Survey



SCALE IN CHAINS
AREA SURVEYED 16.82 ACRES

I hereby certify that in accordance with Special Instructions for Group 30, A-1, dated March 18, 1959, and Special Instructions dated February 5, 1960, April 15, 1959, and June 9, 1961, and the field notes of the Surveyor, pursuant to Assignment Instructions dated June 9, 1961; that the projection of section lines and the development of surveys of the island from aerial photography, as represented by this direction and field notes of survey, have been performed under my direction; and that all work has been done in strict conformity with the instructions, the Manual of Instructions for Survey of the Public Lands of the United States, and in the specific manner prescribed in the notes of survey.

February 11, 1963
Chief, Calcasieu Engineering Section
Division of Field Services

This plat represents the Complete Record of Survey

Surveys as represented herein have been prepared from limited field surveys and examinations sufficient to develop control from existing evidence of the original land surveys, to identify certain topographic features on the island and to classify its character, in combination with the latest applicable aerial photography for purposes of extending the existing rectangular scheme of surveys. Directions of all lines refer to the true meridian and all distances are expressed in chains as obtained by projection upon the aerial photograph. The meanders of the island, at mean-high-water elevation, have also been developed in this manner.

Point for the meander corner bet. secs. 25 and 36, on edge of old river bank and in line with a well known fence at 33.00 chs. dist. (record) westerly of the intersection of a N. - S. cut line held to be the cor. point of secs. 25 and 36 on the east bdy. of the township. Meander corner not monumented.

Thence, by projection upon the applicable aerial photograph (MC - 4 W - 34, 10/18/54, Commodity Stabilization Service, Department of Agriculture), N. 36° 51' W. 36.50 chs. dist. to the point for the auxiliary meander corner on the northeast bank of an island in Coosa River, in sec. 25, at mean-high-water elevation.

Set a brass nail 1 3/4 ins. in diam., on top of concrete filled tile, 24 ins. long 4 ins. in diam., 20 ins. in the ground, with top m.d.

AME
T125 86
3/27
1961

from which
A section, 24 ins. in diam., bears S. 102° W., 56 lks. dist., m.d. S25 AMC BT.
A section, 8 lks. in diam., bears N. 82° E., 34 lks. dist., m.d. S25 AMC BT.

4 numbers of 1. and in Section 26.
S. 26° 00' W., 4.90 chs.
S. 31° 45' W., 4.15 chs.
S. 47° W. E., 10.00 chs.
S. 79° 45' E., 1.90 chs.
N. 45° 45' W., 11.95 chs.
N. 60° 45' W., 13.00 chs.

General Description

The island's formation is in all regards similar to the opposing mainland. It is of clayey loam formation and rises approximately 10 ft. above water level. Timber consists of pecan (some of these might have been planted), pine (some of which has been cut), walnut, hickory, sweet gum, boxelder, sycamore, maple, elm, ash, and cypress, ranging from 4 to 40 ins. in diam.; undergrowth, dense young trees, vines, brush and reeds.

The character of the island and the timber growth thereon attests to its existence in 1819, when Alabama gained statehood, and at all times since. It is, therefore, held to be public land.

The island is well over 50% upland in character within the interpretation of the swamp land acts.

UNITED STATES DEPARTMENT OF THE INTERIOR
BUREAU OF LAND MANAGEMENT
Washington, D. C.

This plat is strictly conformable to the above field notes of survey, which have been critically examined and found correct, and are approved, and the survey, having been properly accepted in accordance with the requirements of law and the regulations of this Bureau, is hereby accepted.

For the Director
Chief, Division of Engineering

RECORDED 400 1 J 1963