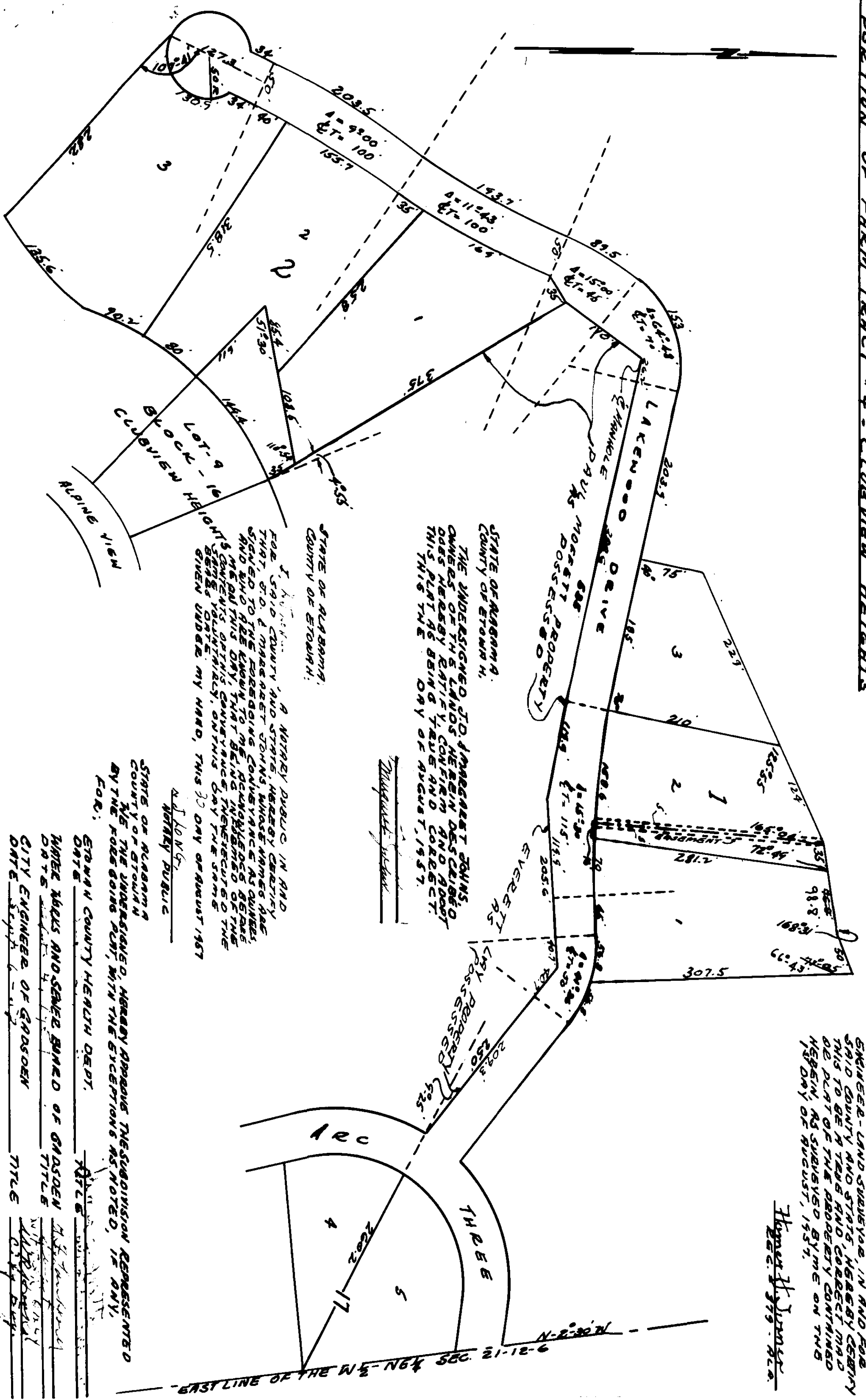


**SECOND REARRANGEMENT OF PORTIONS
OF FARM TRACTS E-2-2-3 AND A-1-1-1
TO A PORTION OF FARM TRACT 4 - CLIVIER HEIGHTS**



STATE OF ALABAMA;
COUNTY OF STONING;
I, THOMAS H. JONES, A LICENSED
SURVEYOR - LAND SURVEYOR, IN AND FOR
SAYBEE COUNTY AND STONING COUNTY,
DO HEREBY CERTIFY THAT THE ABOVE
DESCRIPTION OF THE PROPERTY CONTAINED
HEREIN WAS SUBMITTED BY ME ON THIS
15th DAY OF AUGUST, 1957.

Thomas H. Jones
Surveyor

STATE OF ALABAMA;
COUNTY OF STONING;
I, H. J. JONES, A NOTARY PUBLIC IN AND
FOR THE COUNTY OF STONING, DO HEREBY
CERTIFY THAT THE ABOVE DESCRIBED
PORTIONS OF FARM TRACTS E-2-2-3 AND
A-1-1-1, TOGETHER WITH THE PORTIONS
OF FARM TRACT 4, CLIVIER HEIGHTS,
WAS PLATTED AND RECORDED IN THE
OFFICE OF THE CLERK OF THE COUNTY OF
STONING, ALABAMA, ON THIS 15th DAY OF
AUGUST, 1957.

H. J. Jones
Notary Public

STATE OF ALABAMA;
COUNTY OF STONING;
I, H. J. JONES, A NOTARY PUBLIC IN AND
FOR THE COUNTY OF STONING, DO HEREBY
CERTIFY THAT THE ABOVE DESCRIBED
PORTIONS OF FARM TRACTS E-2-2-3 AND
A-1-1-1, TOGETHER WITH THE PORTIONS
OF FARM TRACT 4, CLIVIER HEIGHTS,
WAS PLATTED AND RECORDED IN THE
OFFICE OF THE CLERK OF THE COUNTY OF
STONING, ALABAMA, ON THIS 15th DAY OF
AUGUST, 1957.

H. J. Jones
Notary Public

STATE OF ALABAMA;
COUNTY OF STONING;
I, THE UNDERSIGNED, HEREBY APPROVE THE SURVEYING REPERMITS
BY THE FOREGOING PLAN, WITH THE EXCEPTIONS NOTED, IN MY
FILE, STONING COUNTY HEALTH DEPT.

THOMAS HULLS AND SARGE JAMES OF GADSDEN
CITY ENGINEER OF GADSDEN
CITY PLANNING COMMISSION OF GADSDEN

DATE 8/15/57

THE STATE OF ALABAMA
STONING COUNTY
OFFICE OF PROBATE JUDGE
I, J. H. JONES, do hereby certify that the above described
portions of farm tracts E-2-2-3 and A-1-1-1, together with the
portions of farm tract 4, Clivier Heights, was platted and
re-recorded in the office for record on this 15th day of
August, 1957.

J. H. Jones
Probate Judge

A-51