

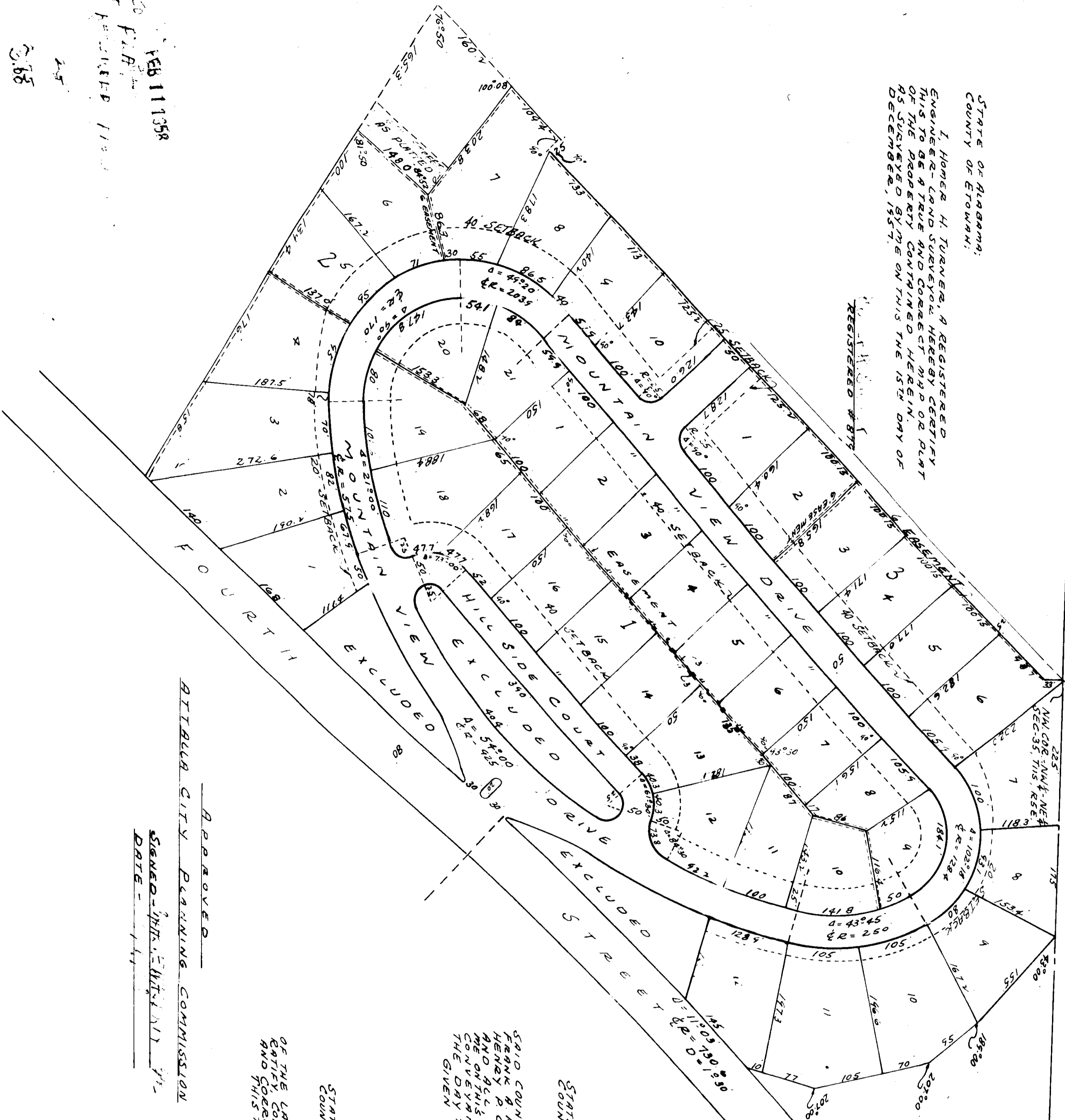
PINE HILL ESTATE

G-27

STATE OF ALABAMA:
COUNTY OF ETOWAH:

I, HOMER H. TURNER, A REGISTERED ENGINEER-LAND SURVEYOR, HEREBY CERTIFY THIS TO BE A TRUE AND CORRECT MAP OR PLAN OF THE PROPERTY CONTAINED HEREIN, AS SURVEYED BY ME ON THIS THE 15TH DAY OF DECEMBER, 1957.

REGISTERED # 875



STATE OF ALABAMA:
COUNTY OF ETOWAH:

I, LILLIE MITCHELL, A NOTARY PUBLIC IN AND FOR SAID COUNTY AND STATE, DO HEREBY CERTIFY THAT FRANK A. REAGAN, NELL JO REAGAN, GEORGE GAYNELL K. TOOD, HENRY D. GRAMM, AND ISEBELLE D. GRAMM, AS OWNERS, EACH AND ALL, WHO ARE KNOWN AND KNOWN TO ME, ACKNOWLEDGE BEFORE ME ON THIS DAY THAT BEING ADVISED OF THE CONTENTS OF THE CONVEYANCE, THEY BEING OF THE SAME VOLUNTARILY, ON THE GIVEN UNDER MY HAND THIS THE 15TH DAY OF DECEMBER, 1957.

LILLIE MITCHELL
NOTARY PUBLIC

STATE OF ALABAMA:
COUNTY OF ETOWAH:

THE UNDERSIGNED, AS OWNERS EACH AND ALL, OF THE LANDS ENGRAVED IN THE WITNESSEES LIST DO HEREBY CERTIFY CONFIRM AND APPROVE THE SAID PLAN AS BEING TRUE AND CORRECT THIS THE 15TH DAY OF DECEMBER, 1957.

FRANK A. REAGAN
NELL JO REAGAN
GEORGE GAYNELL K. TOOD
HENRY D. GRAMM
ISEBELLE D. GRAMM

APPROVED

BIRMINGHAM CITY PLANNING COMMISSION

SIGNED - THIS 15TH DAY OF DECEMBER, 1957

REB 11 1958

F. H. H.

1957

1957