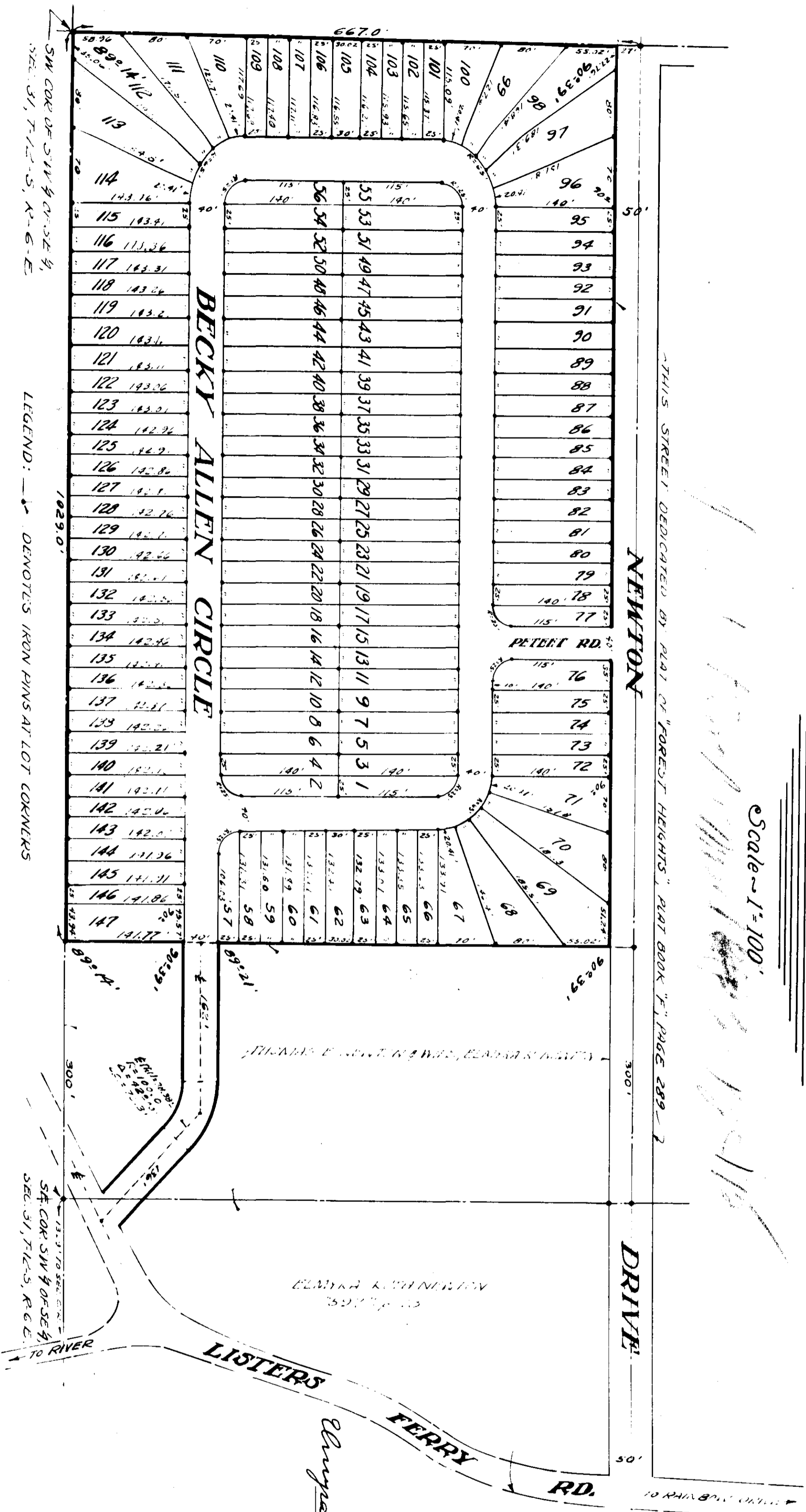


# FOREST HEIGHTS SUPPLEMENTAL ADDITION #1

Scale - 1" = 100'



THIS STREET DEDICATED BY PLAN "FOREST HEIGHTS", MAP BOOK "1", PAGE 289-2

NEWTON

DRIVE

RD.

State of Alabama,  
County of Etowah,

The undersigned, Thomas E. Newton, and wife, Emory Ruth Newton, being owners of certain portions of the lands embraced within the bounds of BECKEY ALLEN CIRCLE as shown herein, and being desirous of dedicating the same as a public street or thoroughfare, do hereby ratify, confirm, and adopt the foregoing plat as being true and correct.

This the 2nd day of February, 1936

Emory Ruth Newtons  
Thomas E. Newtons

State of Alabama,  
County of Etowah,

I, a Notary Public in and for said County and State do hereby certify that Thomas E. Newton, and wife, Emory Ruth Newton, owners, whose names are signed to the foregoing, are known to me, and who are known to me, acknowledge before me on this day, that being informed of the contents of the same voluntarily, they executed the same voluntarily on the day the same bears date.

This the 1st day of February, 1936

Notary Public

State of Alabama,  
County of Etowah,

I, a Notary Public in and for said County and State, do hereby certify that Gladys Gadsden, whose name as president of the Gadsden Corporation, a corporation, is signed to the foregoing conveyance, and who is known to me, acknowledge before me on this day, that being informed of the contents of the same voluntarily, and with full authority, executed the same voluntarily for and as the act of said corporation on the day the same bears date.

Given under my hand this 1st day of January, 1936.

The Notary Public  
Notary Public

State of Alabama,  
County of Etowah,

The undersigned, The Gadsden Corporation, a corporation, as trustee (authorized by instrument recorded in deed book 105, pages 361, 362 & 363, Probate Office, Etowah County, Alabama) does hereby ratify, confirm, and adopt the foregoing plat as being true and correct.

This the 1st day of January, 1936.

The Gadsden Corporation

by \_\_\_\_\_  
President

Witnessed by \_\_\_\_\_  
Secretary

State of Alabama,  
County of Etowah,

I, A. L. Wynn, a registered surveyor of Etowah County, Alabama, hereby certify that I made a survey of the lands embraced by the foregoing plat, that the same is true and correct as represented herein.

This the 31st day of January, 1936.

A. L. Wynn  
Reg. L.S. # 1625

735  
760