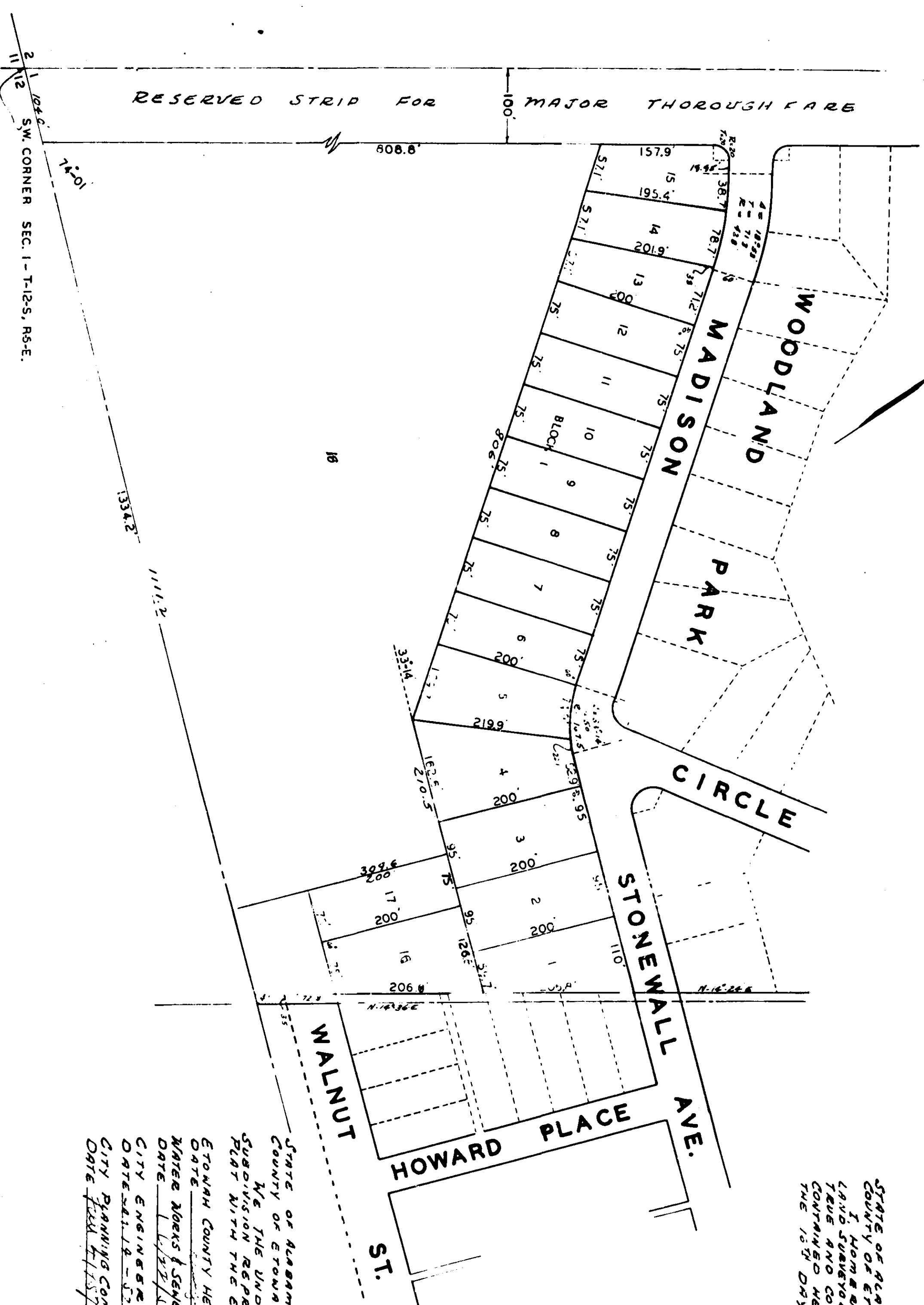


FIRST ADDITION TO WOODLAND PARK

Page - 1



STATE OF ALABAMA,
 COUNTY OF STOWAN:
 I, DAVID L. TURNER, a Notary Public in and for the State of Alabama, do hereby certify that the foregoing conveyance is correct and that the same is being recorded in the public records of the County of Stowan, Alabama, on this 14th day of July, 1987.

David L. Turner

STATE OF ALABAMA,
 COUNTY OF STOWAN:
 THE UNDERSIGNED, THOMAS H. BAUETT, OWNER OF THE PROPERTY HEREIN DESCRIBED, DOES HEREBY CERTIFY THAT THIS MAP IS BEING RECORDED AS BEING TRUE AND CORRECT, THIS THE 14th DAY OF DECEMBER, 1986.

Thomas H. Bauett

STATE OF ALABAMA,
 COUNTY OF STOWAN:
 I, HOMER H. TURNER, a Registered Engineer, Land Surveyor, hereby certify that this is a true and correct map of part of the lands containing herein, as surveyed by me on this the 18th day of December, 1986.

Homer H. Turner
 REGISTERED 879

Filed
 JUN 24 1987

STATE OF ALABAMA,
 COUNTY OF STOWAN:
 WE, THE UNDERSIGNED, HEREBY APPROVE THE SUBDIVISION REPRESENTED BY THE FOREGOING PLAT WITH THE EXCEPTIONS AS NOTED IN ANY:
 STOWAN COUNTY HEALTH DEPT. *Health Dept.*
 DATE *7/14/87* TITLE *Health Dept.*
 WATER WORKS & SEWER BOARD OF GADSDEN *Water Works & Sewer Board*
 DATE *7/14/87* TITLE *Water Works & Sewer Board*
 CITY ENGINEER OF GADSDEN *City Engineer*
 DATE *7/14/87* TITLE *City Engineer*
 CITY PLANNING COMMISSION OF GADSDEN *City Planning Commission*
 DATE *7/14/87* TITLE *City Planning Commission*

Returned for Gov. 9 Gov. B-446