

44 CONNELL ADDITION 44

A RESURVEY OF LOT NO. 52 OF THE INDIA
 SUTHERLIN ESTATE - MAY 8, 1956
 SCALE 1"=30'
 BEING IN THE S.E. $\frac{1}{4}$ OF THE NW $\frac{1}{4}$ OF SECTION 35
 T-11-S, R-6-E, ETOWAH CO. ALABAMA.

STATIONED

BY A. L. SMITH, Surveyor, Etowah County, Alabama, this is to certify that this is a true and correct copy of the original plat on file in my office as a record and of the original plat on file in my office as a record.

A. L. Smith
 Surveyor

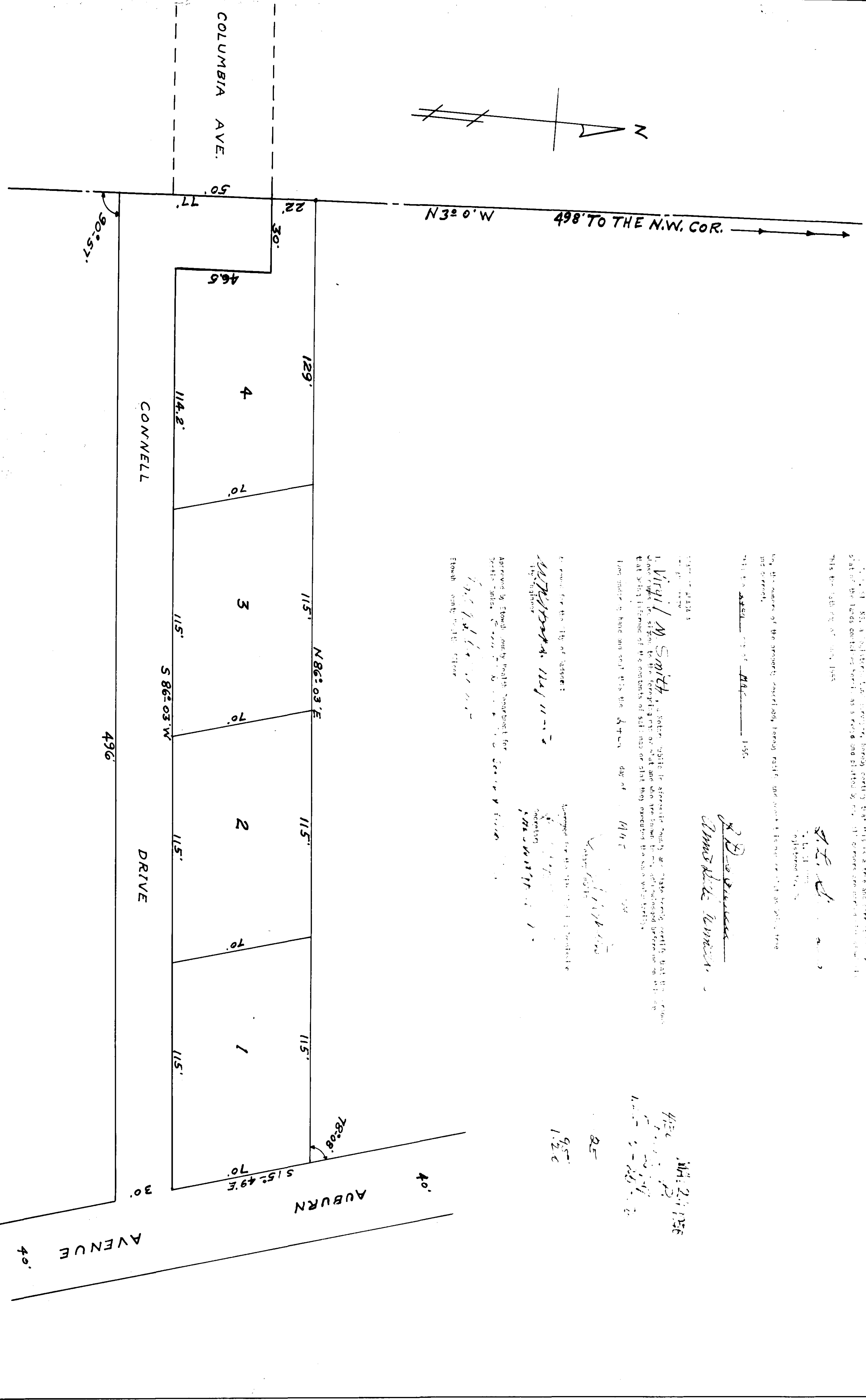
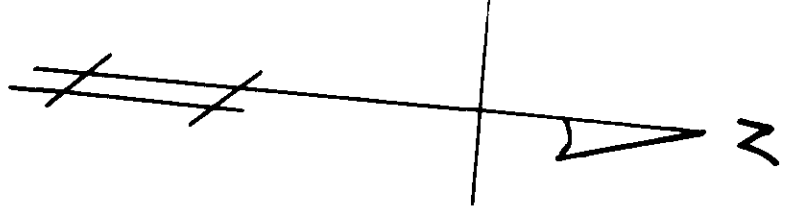
R. B. ...
 Attorney at Law

By the owner of the property, described herein, I hereby certify that this is a true and correct copy of the original plat on file in my office as a record and of the original plat on file in my office as a record.

Virgil M. Smith
 Owner

Approved by the Board of Health, Etowah County, Alabama, this is to certify that this is a true and correct copy of the original plat on file in my office as a record and of the original plat on file in my office as a record.

Etowah County, Alabama



11-2-56
 344