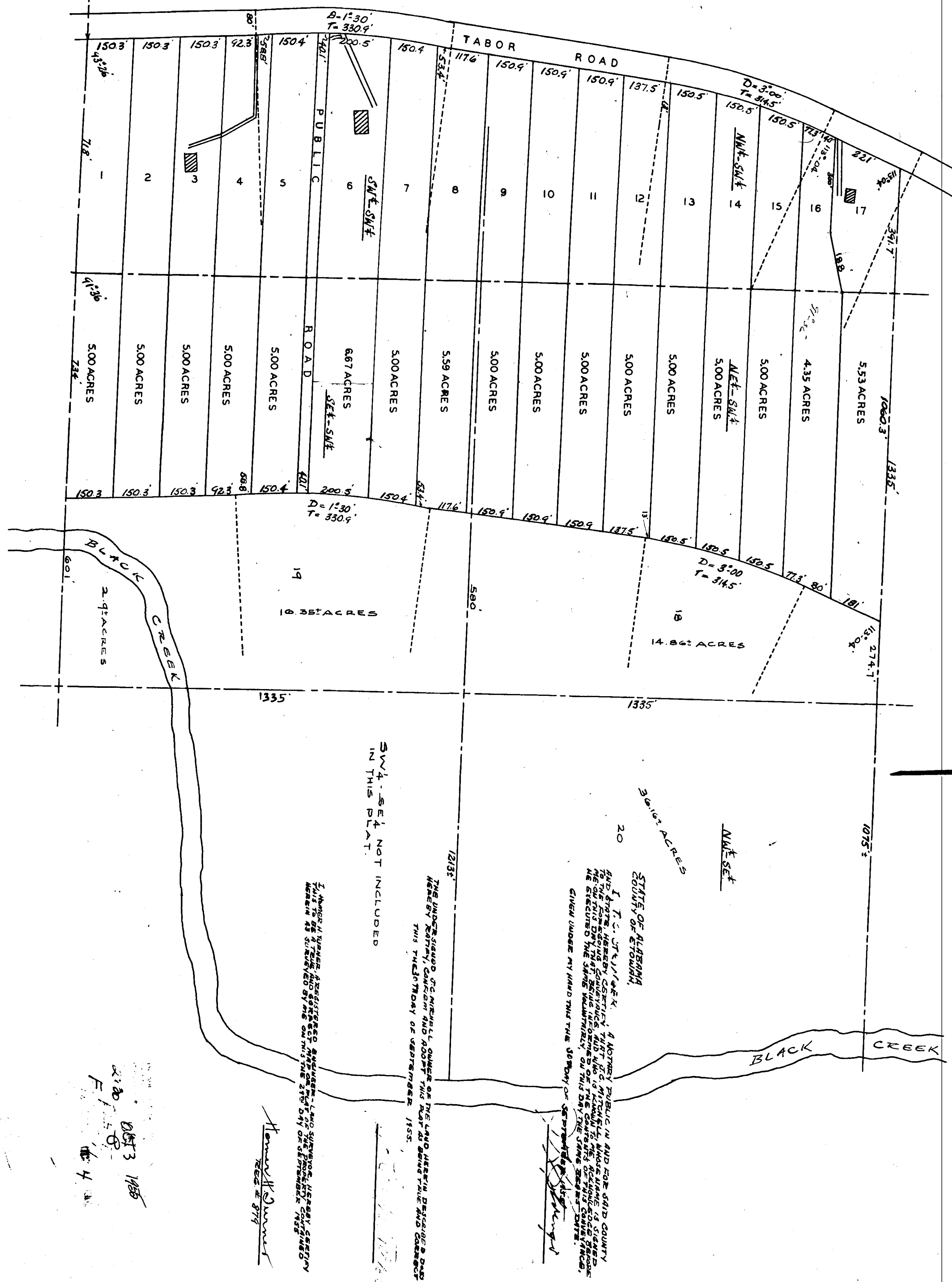


SW COR OF SW 1/4 - SW 1/4 SECTION 15

J. C. MITCHELL
FARM TRACTS

F-299



SW 1/4 - SET NOT INCLUDED
IN THIS PLAT.

I, James K. Dummer
 Notary Public in and for the State of Alabama,
 do hereby certify that the foregoing plat of the land hereunto referred to was
 presented to me for recording on the 11th day of September, 1935, and that the same
 was duly recorded in my office in accordance with the provisions of the laws of
 this State, and that the same is a true and correct copy of the original as
 presented to me for recording.

STATE OF ALABAMA
 COUNTY OF ETOWHA,
 I, James K. Dummer, a Notary Public in and for said County
 and State, do hereby certify that the foregoing plat of the land hereunto
 referred to was presented to me for recording on the 11th day of September,
 1935, and that the same was duly recorded in my office in accordance with
 the provisions of the laws of this State, and that the same is a true and
 correct copy of the original as presented to me for recording.

2120 OCT 3 1935
 F-299
 104