

**REARRANGEMENT OF
LOTS 3-4 AND 5 BLOCK 2
RIVER VIEW ADDITION
NUMBER TWO, TO
HOKES BLUFF, ALA.**

I BRUCE SMITH A REGISTERED GEODETIC AND SURVEYOR HEREBY CERTIFY THIS TO BE A TRUE AND CORRECT MAP OF THE REARRANGEMENT OF LOTS 3 AND 4 AND 5 BLOCK 2 OF RIVER VIEW ADDITION NUMBER TWO TO HOKES BLUFF ALA. AS SURVEYED BY ME THIS JUNE 8 1955

Bruce Smith
BRUCE SMITH REG. NO. 342

THE UNDERSIGNED SAID W. JAMES OF ALL THE PROPERTY SHOWN IN THE MAP HEREIN HEREBY RAISEY AND ADOPY SAID MAP.

WITNESSES OUR HANDS THIS 12th DAY OF JULY 1955

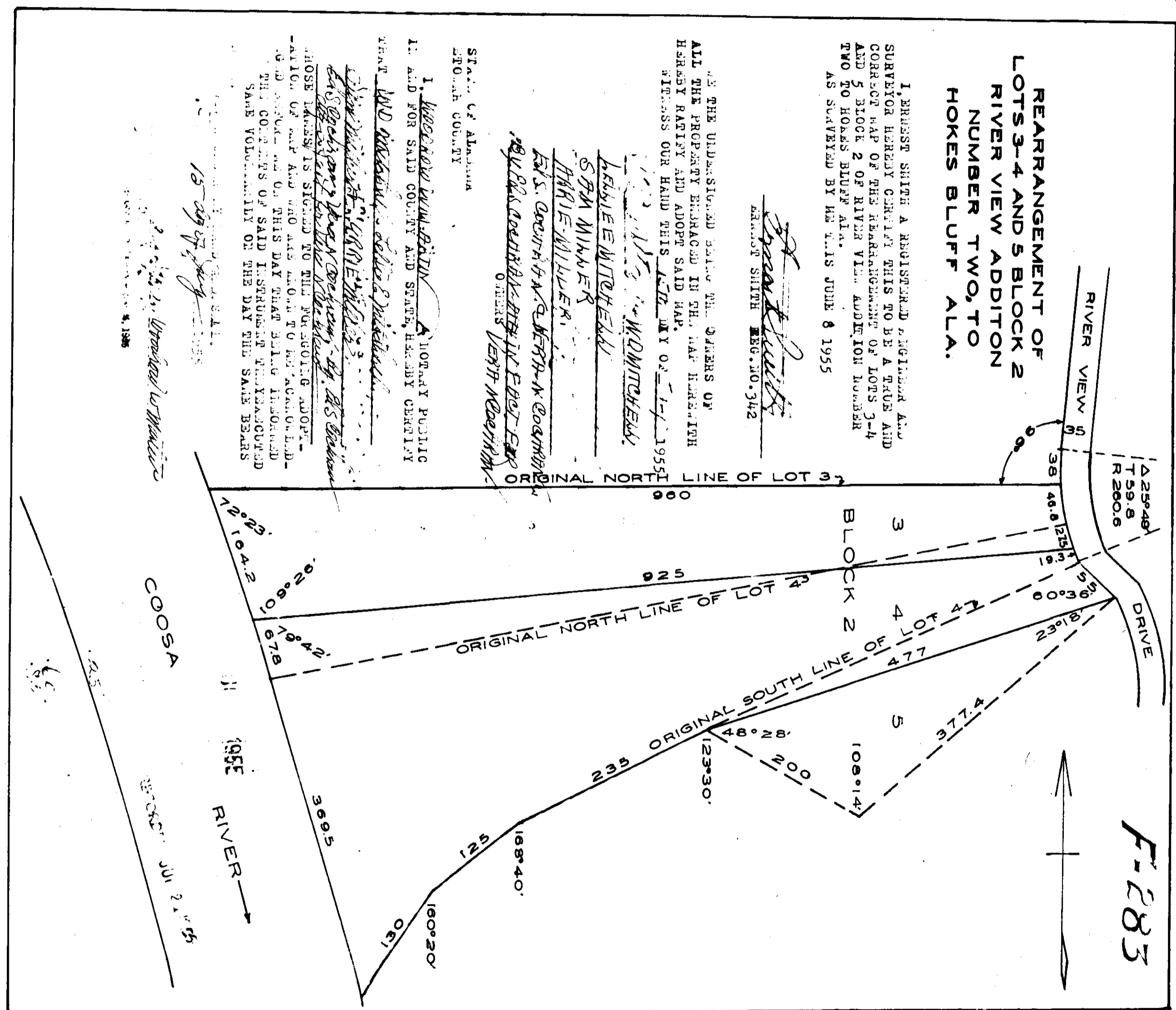
W. James
W. JAMES
BY *W. James*
W. JAMES
BY *W. James*
W. JAMES

STATE OF ALABAMA
HOOVER COUNTY

I, *W. James* A HONORARY PUBLIC NOTARY AND SHERIFF OF HOOVER COUNTY

DO HEREBY CERTIFY THAT THE ABOVE MENTIONED MAP WAS FILED FOR RECORD AND ADOPY SAID MAP BY THE COURT OF HOOVER COUNTY ALABAMA ON THE 12th DAY OF JULY 1955.

W. James
W. JAMES
NOTARY PUBLIC
HOOVER COUNTY ALABAMA



THE STATE OF ALABAMA
HOOVER COUNTY
Office of Probate
The following instrument was filed in office on
the 12th day of July 1955 at 10:30 AM
was duly recorded on the 12th day of July 1955
The following fees have been received:
Dist. Fee \$2.00
Map Fee \$1.00
Total \$3.00
W. James
Judge of Probate Hoover County, Ala.

F-283