

SURVEY OF J.J. HALE'S "HEIRS" ESTATE
 IN SEC. 9 & 16, T.11S, R.1E
 ETOWAH COUNTY, ALABAMA

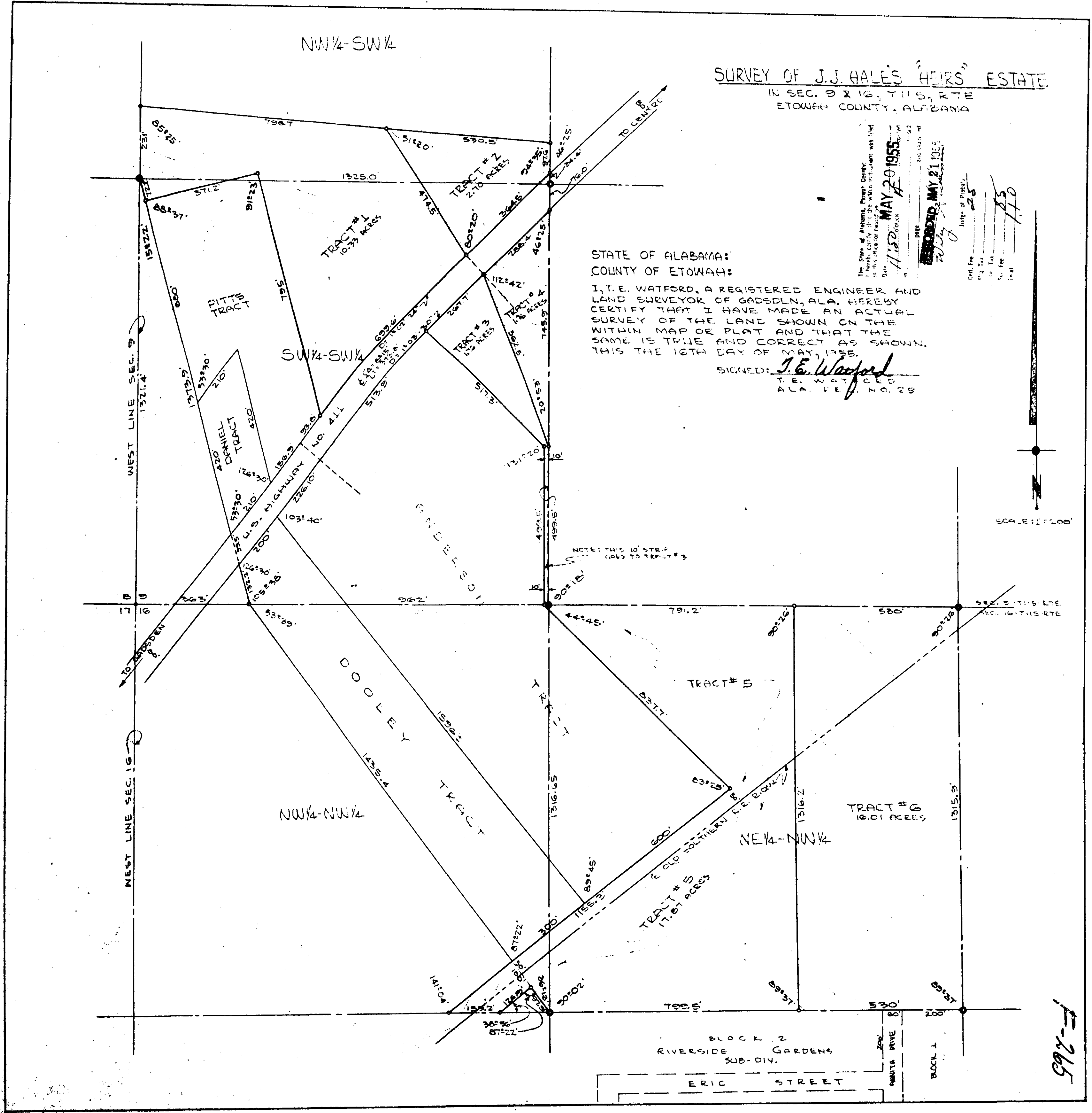
STATE OF ALABAMA:
 COUNTY OF ETOWAH:

I, T.E. WATFORD, A REGISTERED ENGINEER AND
 LAND SURVEYOR OF GADSDEN, ALA. HEREBY
 CERTIFY THAT I HAVE MADE AN ACTUAL
 SURVEY OF THE LAND SHOWN ON THE
 WITHIN MAP OR PLAT AND THAT THE
 SAME IS TRUE AND CORRECT AS SHOWN
 THIS THE 12TH DAY OF MAY, 1955.

SIGNED: *T.E. Watford*
 T. E. WATFORD
 A. L. E. 7000
 7.0.28

The State of Alabama, Surveyor-General:
 I hereby certify that the within instrument was filed
 for record on this day of MAY 1955
 at 11:32 o'clock
 in BOOK 200 PAGE 110
 REGISTERED MAY 21 1955
 T. E. WATFORD
 Surveyor-General

SCALE: 1"=200'



F-265

F-265