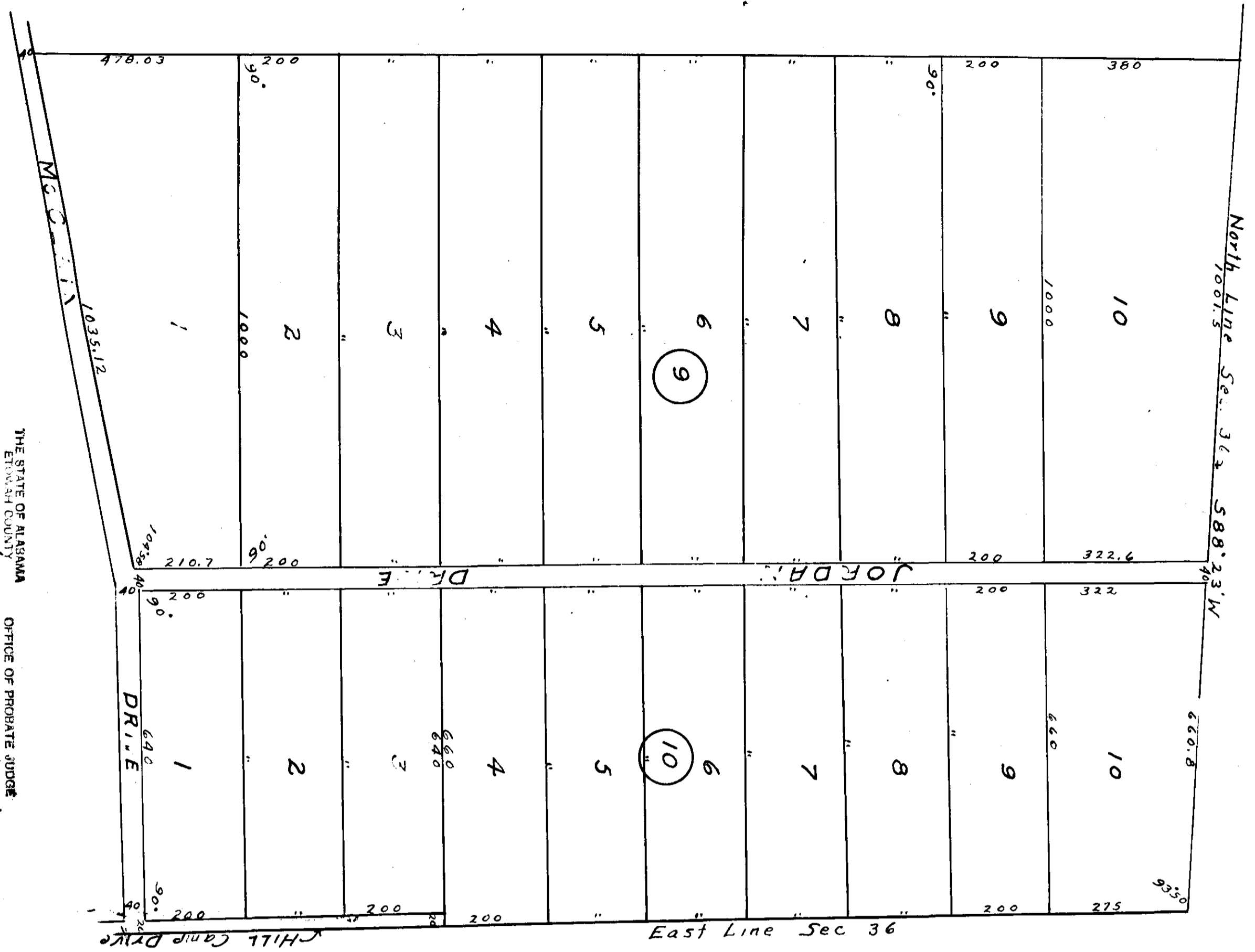
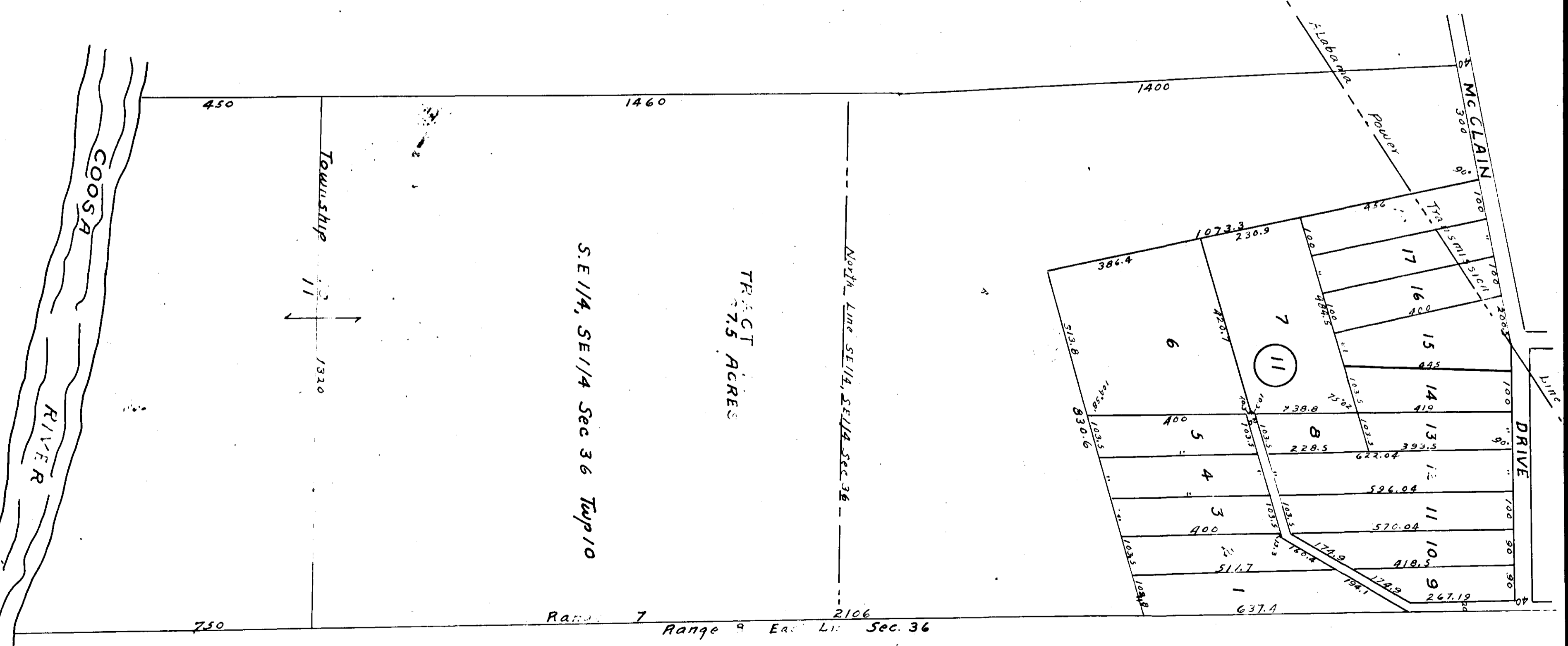


Sheet 4 of 4



THE STATE OF ALABAMA
 ERMINGHAM COUNTY
 OFFICE OF PROBATE JUDGE
 This is to certify that the within and foregoing plat is a true and correct copy of the record on file in the office of the Probate Judge of the County of Ervingham, Alabama, and the following fees have been paid:
 Plat Fee \$25.00
 Map Fee \$10.00
 Rec. Fee \$10.00
 Seal \$10.00
 Judge of Probate Ervingham County, Ala.



F 225