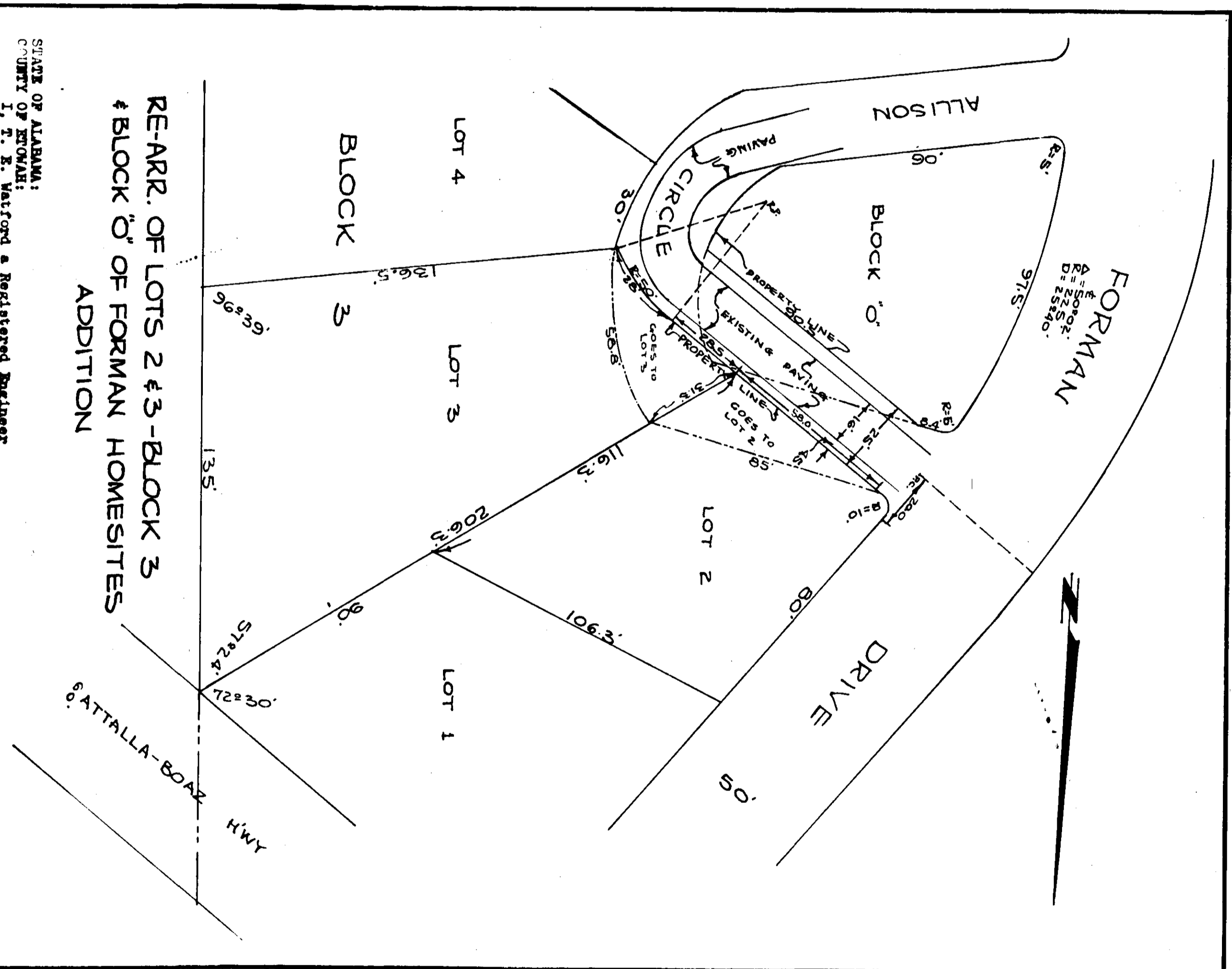


F-29



REAR. OF LOTS 2 & 3 - BLOCK 3  
 & BLOCK 0 OF FORMAN HOMESITES  
 ADDITION

STATE OF ALABAMA:  
 COUNTY OF STONEMAN:  
 I, T. E. Vetterford, a Registered Engineer  
 and Surveyor of Gadsden, Alabama hereby certify  
 that the foregoing plat is true and correct.  
 According to my survey this the Seventh Day  
 of April, 1951.

Signed: *T. E. Vetterford, C.E. 845*  
 T. E. Vetterford, C.E. 845  
 Sr. License No. 79

STATE OF ALABAMA:  
 COUNTY OF STONEMAN:  
 The Undersigned, M.A.M. Trading Company, Inc.  
 a Corporation, as grantor does hereby ratify and  
 adopt the within map or plat as being true and  
 correct.  
 M.A.M. Trading Company Inc., Owner

By: *H. G. Cunningham* President  
 M.A.M. Trading Company Inc.  
 By: *Dorothy Morgan* Secretary

STATE OF ALABAMA:  
 COUNTY OF STONEMAN:  
 I, *W. S. Patterson* a Notary  
 Public, State of Alabama at Largo, hereby certify  
 that M.S. Patterson Jr. and Leroy Morgan, whose  
 names as president and secretary, respectively of  
 M.A.M. Trading Co. Inc. and Alabama Corporation, are  
 signed to the within map, and who are known to me,  
 a Notary Public, on this day, that being in  
 my presence, and the contents, they, as such officers  
 of the said corporation, executed the same voluntarily  
 and without any fraud, coercion, or duress, and which  
 said map or plat was proposed to me, and which  
 said map or plat I have read and find it to be  
 correct, and I have signed my name and seal this the  
 12th day of April, 1951.

W. S. Patterson, Notary Public, State of Alabama at Largo

RECORDED MAY 28 1951  
 MAY 28 1951  
 MAY 28 1951