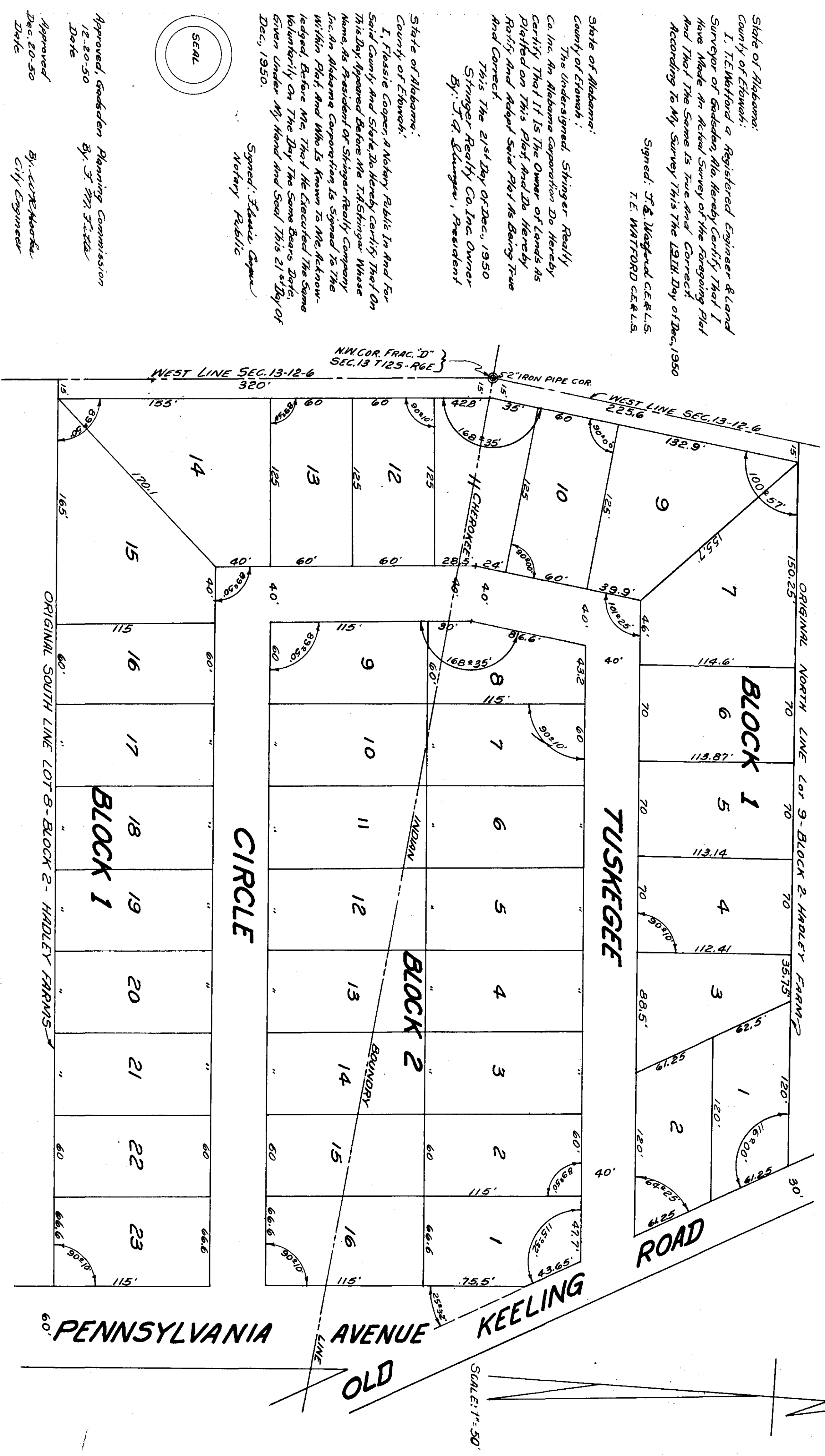


MOTON HEIGHTS
 BEING A REARRANGEMENT OF CRESTLINE HIGTS - 'C' - 111
 COMPOSED OF LOTS 8 & 9 BLOCK 2 - HADLEY FARMS - 'B' - 236



State of Alabama:
 County of Etowah:
 I, T.E. Whitford a Registered Engineer & Land Surveyor of Etowah Ala. hereby certify that I have made an actual survey of the foregoing plat and that the same is true and correct according to my survey this the 21st day of Dec, 1950

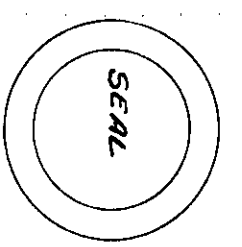
Signed: T.E. Whitford, C.E.R.&L.S.
 T.E. WHITFORD C.E.R.&L.S.

State of Alabama:
 County of Etowah:
 The undersigned, Springer Realty Co. Inc. an Alabama corporation do hereby certify that I is the Owner of lands as platified on this plat, and do hereby ratify and adopt said plat as being true and correct.

This the 21st day of Dec, 1950
 Springer Realty Co. Inc. Owner
 By: J.G. Edmunds, President

State of Alabama:
 County of Etowah:
 I, Hoasia Cooper, a Notary Public in and for said County and State, do hereby certify that on this day, appeared before me the T. Edginger whose name, as President of Springer Realty Company, Inc. an Alabama corporation, is signed to the within plat, and who is known to me as known-ledged, before me, that he executed the same voluntarily on the day the same bears date, given under my hand and seal this 21st day of Dec, 1950.

Signed: Hoasia Cooper
 Notary Public



Approved, Etowah Planning Commission
 12-20-50
 By: J. M. J. J. J.

Approved
 Dec. 20, 50
 By: J. M. J. J. J.
 City Engineer

Filed for record on the 21st day of December 1950 at 5:10 P.M.
 Book 28 Page 49 of 1850

Frank A. Rogers