

RIVER VIEW ADDITION TO HOKES BLUFF ALABAMA.

SCALE: 1"=100'

State of Alabama,
Etowah County.

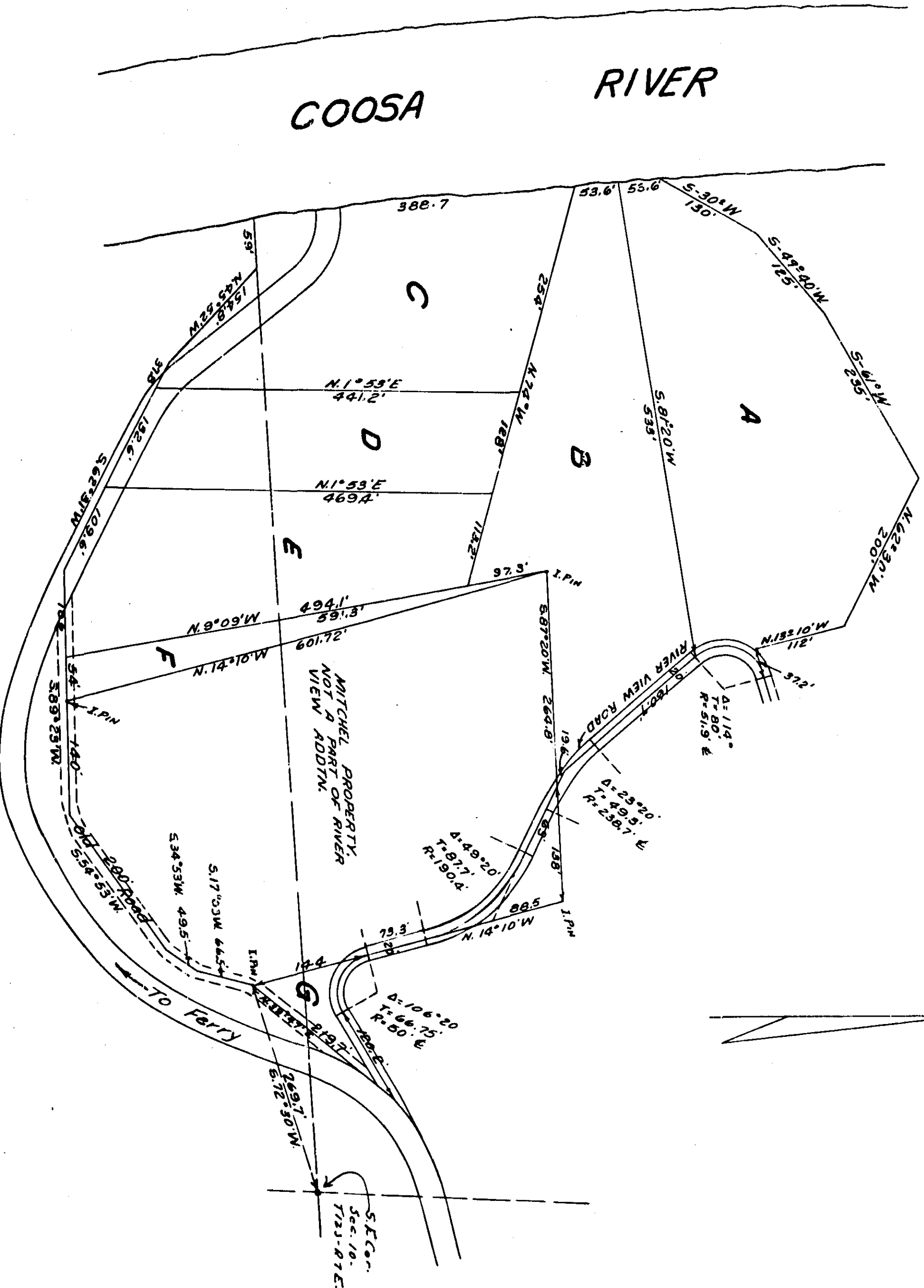
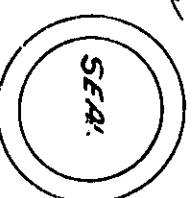
I, The undersigned Being The
Owner of The Property embraced in this
Map or Plat hereby testify and Adopt said
Map
Witness My hand and Seal this 19 Day of
October 1950
Ed J Cochran
Owner

State of Alabama,
Etowah County.

I, Ernest Smith, a Registered
Engineer and Surveyor, hereby certify
This to be a correct Plat of the River-View
Addition to Hokes Bluff Alabama, as
Surveyed By Me
This The 19 Day October 1950
Ernest Smith
Reg. No. 342

State of Alabama, Etowah County.

Before Me, a Notary Public, Personally
appeared Ed S. Cochran and Ernest
Smith, and acknowledged that their
Signatures on this instrument are
Genuine, and were placed thereon by
Them on the 19th Day of October, 1950.
Thomas S. Allen
Notary Public



Filed for record on the 20th day of
October 1950
Ernest Smith
Surveyor

241
E