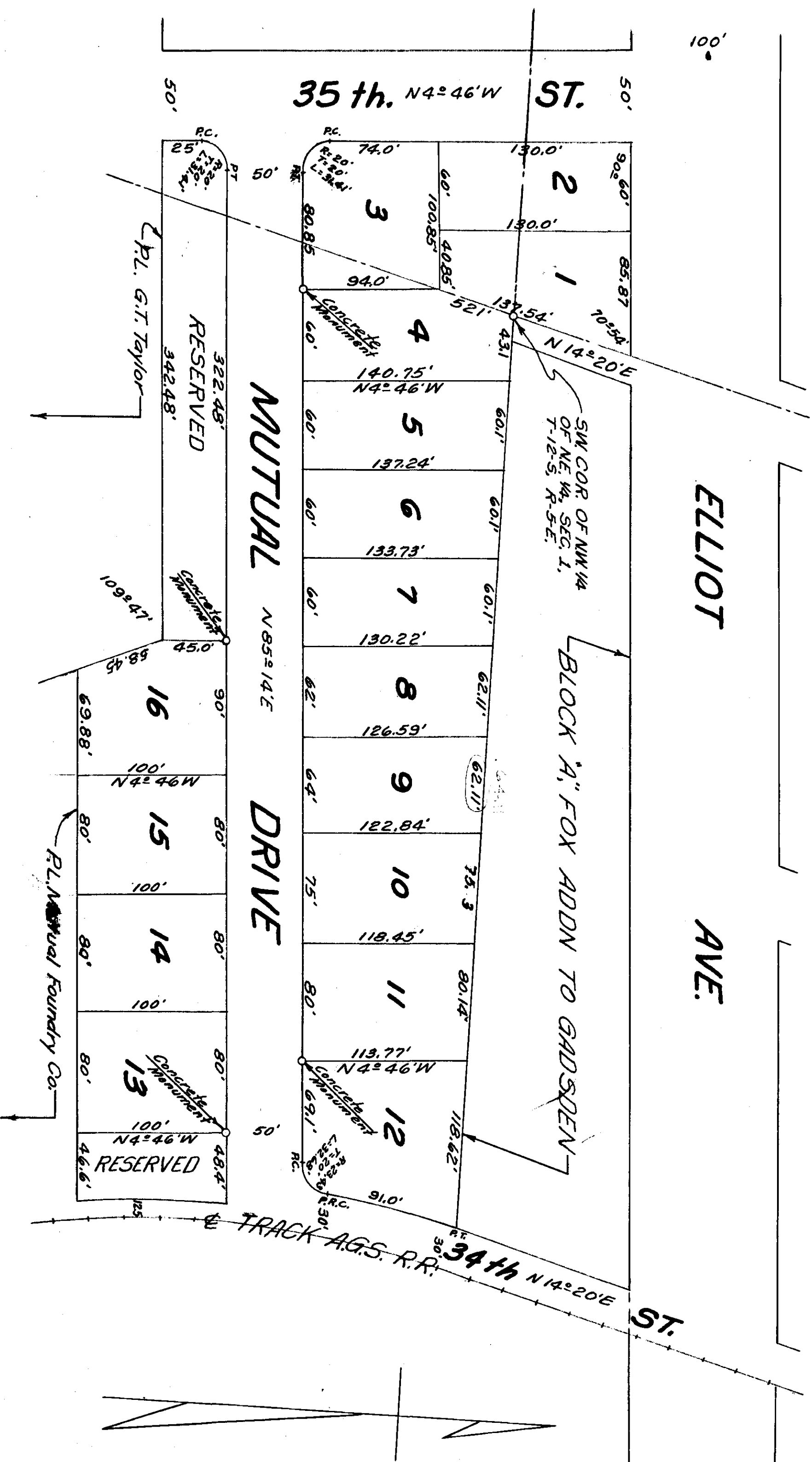


THE
MUTUAL ADDITION TO GADSDEN ALABAMA



State of Alabama,
County of Etowah,

The undersigned Mutual Foundry Company a Corporation, owners of the lands embraced in the foregoing plat, hereby certify, adopt and confirm the same as being true and correct.

This the 8th Day of September, 1950.

Attest
By: J. B. Krewer
Its Secy Treas.

Mutual Foundry Co.
By: E. H. Haverbeke
Its President

State of Alabama,
County of Etowah,

I, Josephine P. Alexander a Notary Public in and for said County and State, hereby certify that T. B. Harkins, whose name as President of the Mutual Foundry Company a Corporation, is signed to the foregoing conveyance, and who is known to me, acknowledged before me on this day, that being informed of the contents of the conveyance, he, as such officer and with full authority, executed the same voluntarily for and on the act of said Corporation, given under my hand this the 8th day of Sept, 1950

Josephine P. Alexander
Notary Public

SEAL

State of Alabama,
County of Etowah,

We, the undersigned, hereby approve the foregoing

plat
This the 11th day of September, 1950.

J. M. Fiddle
City Planning Board
Gadsden, Alabama

State of Alabama,
County of Etowah,

I, A. L. Wagoner, a Land Surveyor, hereby certify that I made a survey of the lands embraced in the foregoing plat, that the same is true and correct as herein represented.

Given under my hand this the 8th day of Sept, 1950.

Scale: 1"=60'

A. L. Wagoner
Reg. L.S. #1626

SEAL

Filed to show for record on the 17th
October A. D. 1950 2:35 PM
R. M. and duly recorded this 18th
October 1950
Map of Etowah

Frank A. Wagoner