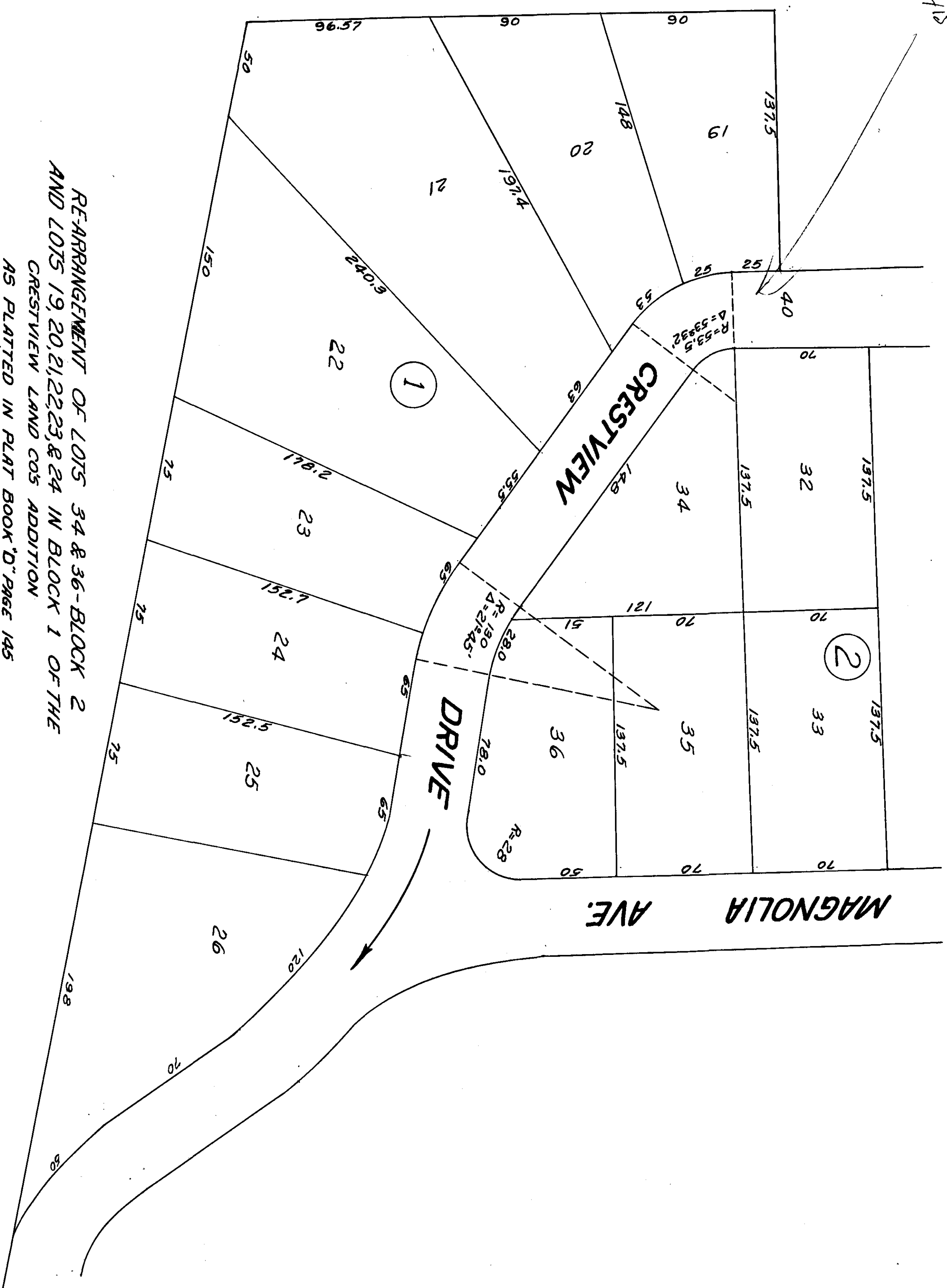


FOR Amendment of part of
Township Drive
shown on page 115



RE-ARRANGEMENT OF LOTS 34 & 36 - BLOCK 2
AND LOTS 19, 20, 21, 22, 23, & 24 IN BLOCK 1 OF THE
CRESTVIEW LAND CO'S ADDITION
AS PLATTED IN PLAT BOOK "D" PAGE 145

Read in office for record on the 26th day of
August, A. D. 1950. Witness my
hand and duly recorded the 28th day of
August, 1950.
Notary Public

Frank A. Morgan

STATE OF ALABAMA
COUNTY OF ETOWAH
I, E. Welford, a Registered Engineer
and Surveyor, hereby certify that
the foregoing Plat is true and
correct according to my survey
this the 22nd Day of August 1950
Signed *E. Welford* C.E.R. 15
Attest, Reg. No. 29

Approved Gadsden Planning Commission
Date 8-26-50
Approved
Date Aug 26-50
City Engineer
L. H. Atkinson

STATE OF ALABAMA
COUNTY OF ETOWAH
We the undersigned, *v.e. Farnell and wife
Alma Gray Farnell; W.G. Gable and wife
Essie Belle Gable; Arthur R. Brothers
and wife; Roy Brothers;*
~~W.G. Gable and wife; Roy Brothers;~~
*Wife Gertrude Danaway and Willie Reid
Niptrick* hereby certify that we are
the Owners of the said Platted lands as
shown by the foregoing plat and we do
hereby ratify and adopt said Plat
as being a true and correct representation
of T. E. Welford, Civil Engineer and
Land Surveyor.
This the 25th Day of August 1950

E. Farnell
Alma Gray Farnell
W. G. Gable
Essie Belle Gable
Roy Brothers
Arthur R. Brothers
Gertrude Danaway
Willie Reid Niptrick
Wife Gertrude
Willie Reid Niptrick
Land Surveyor

STATE OF ALABAMA
COUNTY OF ETOWAH
I, H. A. STRINGER, a Notary Public, in and
for said County and State, do hereby
certify that on this day appeared
before me, the above signed owners
of lands shown on this Plat, and
being known to me, acknowledged
before me that they executed the
same voluntarily on the day the same
bears date.
Given under my hand and seal, this
the 25th Day of August, 1950
Signed: *H. A. Stringer*
Notary Public

