

REARRANGEMENT PART OF BLOCK 4
MEADOWLAWN NO. 1. Section 100.

I, Edwin Richard Jr. a Registered Land Surveyor, hereby certify that this is a true and correct map as part of the lands contained herein as surveyed and divided by me. This the 25th day of May, 1950.

Edwin Richard Jr.
Registered No. 100.

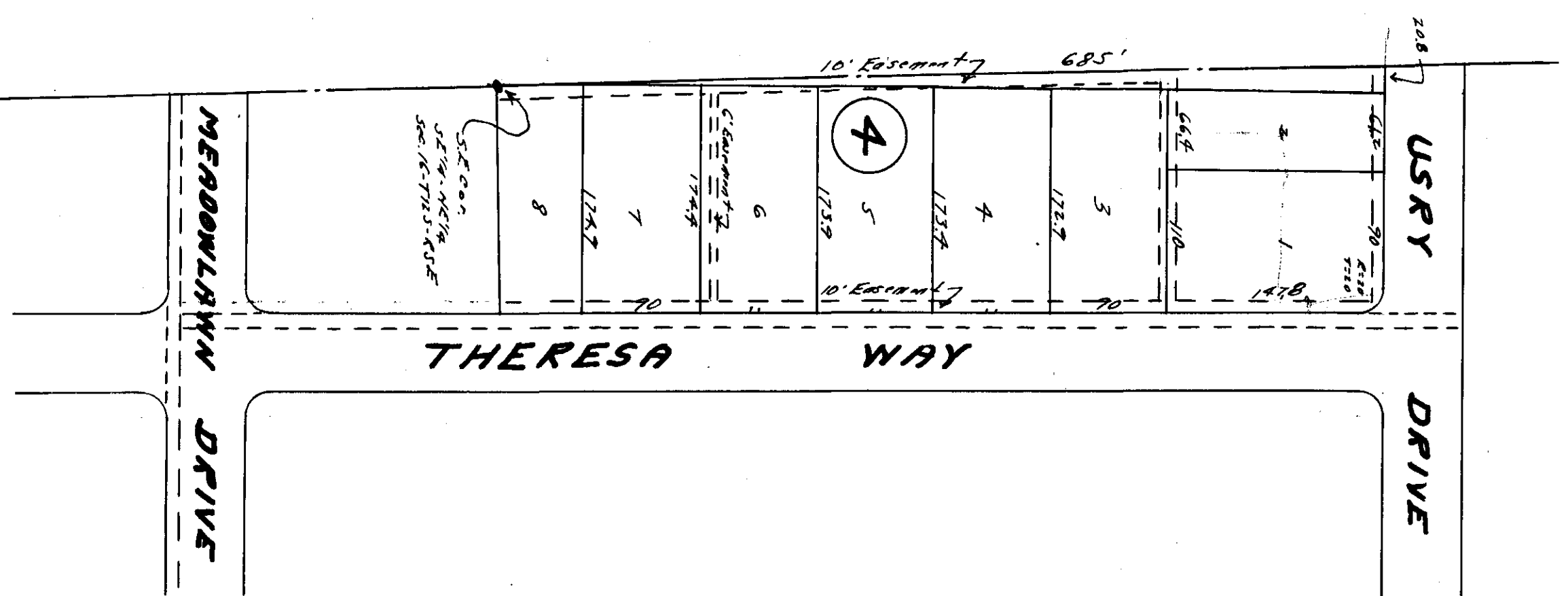
We the undersigned, owners of the lands herein described do hereby verify, confirm and adopt this plat as being true and correct.

Belle Burgess
Della Simpson.
Dinner Young.
Aimee Berg.
Lena Young.
Lola Berg.

STATE OF ALABAMA;
COUNTY OF ETOWAH;

I, Progress T. Chasport, a Notary Public in and for said State and County of hereby certify that on this day appeared before me the above signed owners of the lands described herein and being known to me individually I lodged before me that they executed the same voluntarily on the day the same were signed.

Progress T. Chasport
Notary Public.



Filed in Office for record on the 20th day of
MAY 1950 A.M. 10:10 at 10:10 o'clock
L.M. and duly recorded the 27th day of
JUNE 1950.
Judge of Probate
Frank A. Reagan