

RE-SUBDIVISION OF PORTIONS  
OF BLOCKS "D" AND "E" OF THE  
MAYFAIR ESTATES AS RECORD-  
ED IN PLAT BOOK "C" PAGE "273"  
PROBATE OFFICE, ETOWAH  
COUNTY, ALABAMA.

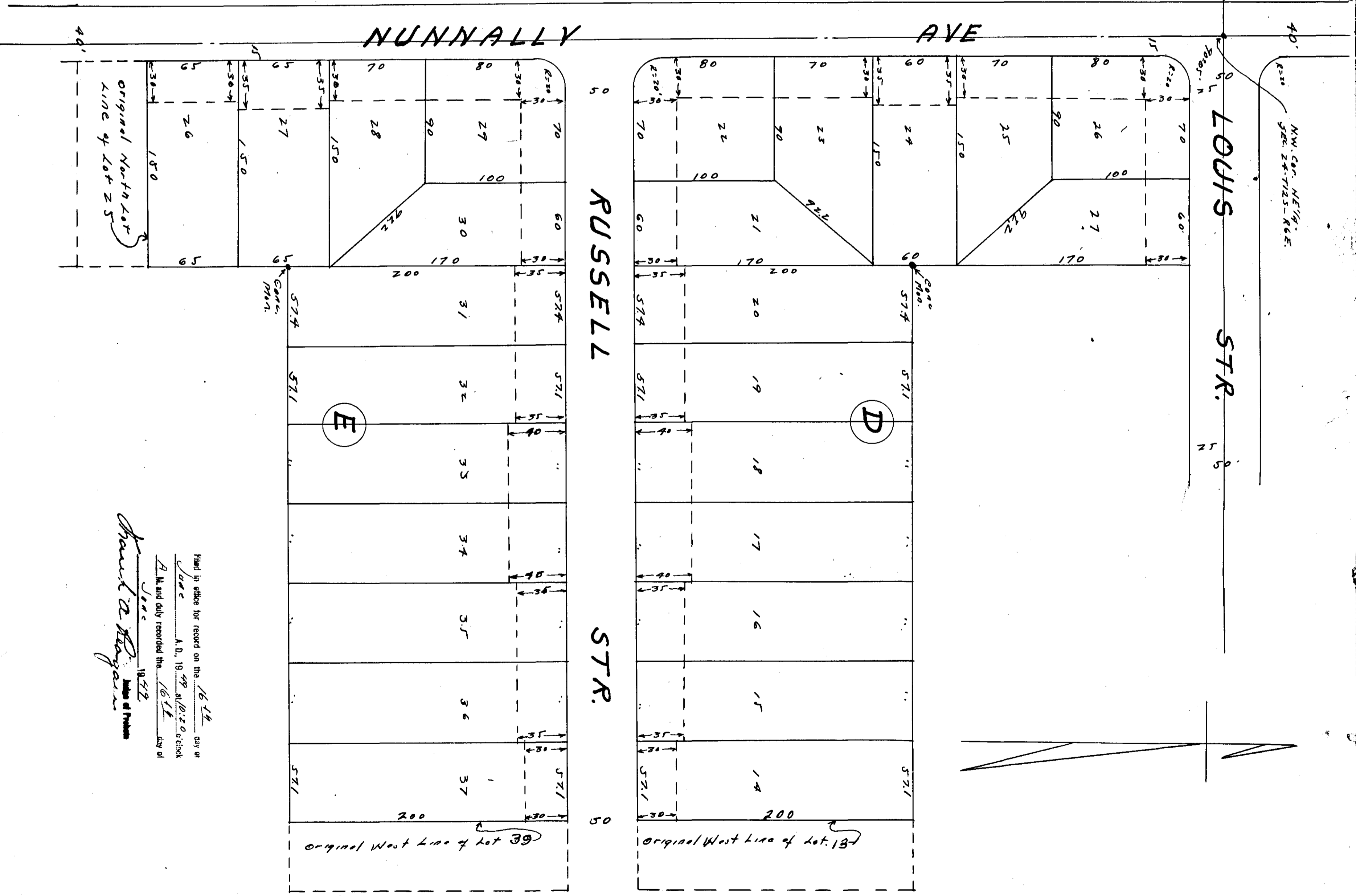
STATE OF ALABAMA:  
COUNTY OF ETOWAH:  
I, T. E. Wofford, Registered Engineer-Surveyor  
of Etowah, Alabama, hereby certify that the fore-  
going plat is true and correct according to my  
survey this the 15th day of June, 1949.

STATE OF ALABAMA:  
COUNTY OF ETOWAH:  
The undersigned Mayfair Estates, a corporation as  
owner do hereby certify and accept the within plat  
as being true and correct  
This the 15 day of June, 1949.  
By: J. B. Ruskoff President

STATE OF ALABAMA:  
COUNTY OF ETOWAH:  
I, Mory P. Edwards, a Notary Public for said  
State and County, do hereby certify that F. G. Pickett, then  
owner and President of the Mayfair Estates, a corporation  
incorporated in Alabama, is signed to the within plat and who is  
known to me, acknowledged before me as the day that  
being is former of the contents, he, as such officer,  
and with full authority executed same voluntarily  
for and as the act of said corporation and which said  
corporation has no corporate seal.  
This the 15 day of June, 1949.  
Mory P. Edwards  
Notary Public

Approved: Gadsden Planning Commission  
Date: 6-16-49 J. M. Felt  
Chairman

Approved:  
Date: June, 15-49  
C. C. Rucker  
City Engineer



Filed in office for record on the 16th day of  
June, A. D. 1949 at 12:20 o'clock  
A. M. and duly recorded this 16th day of  
June, 1949  
Mory P. Edwards  
Notary Public