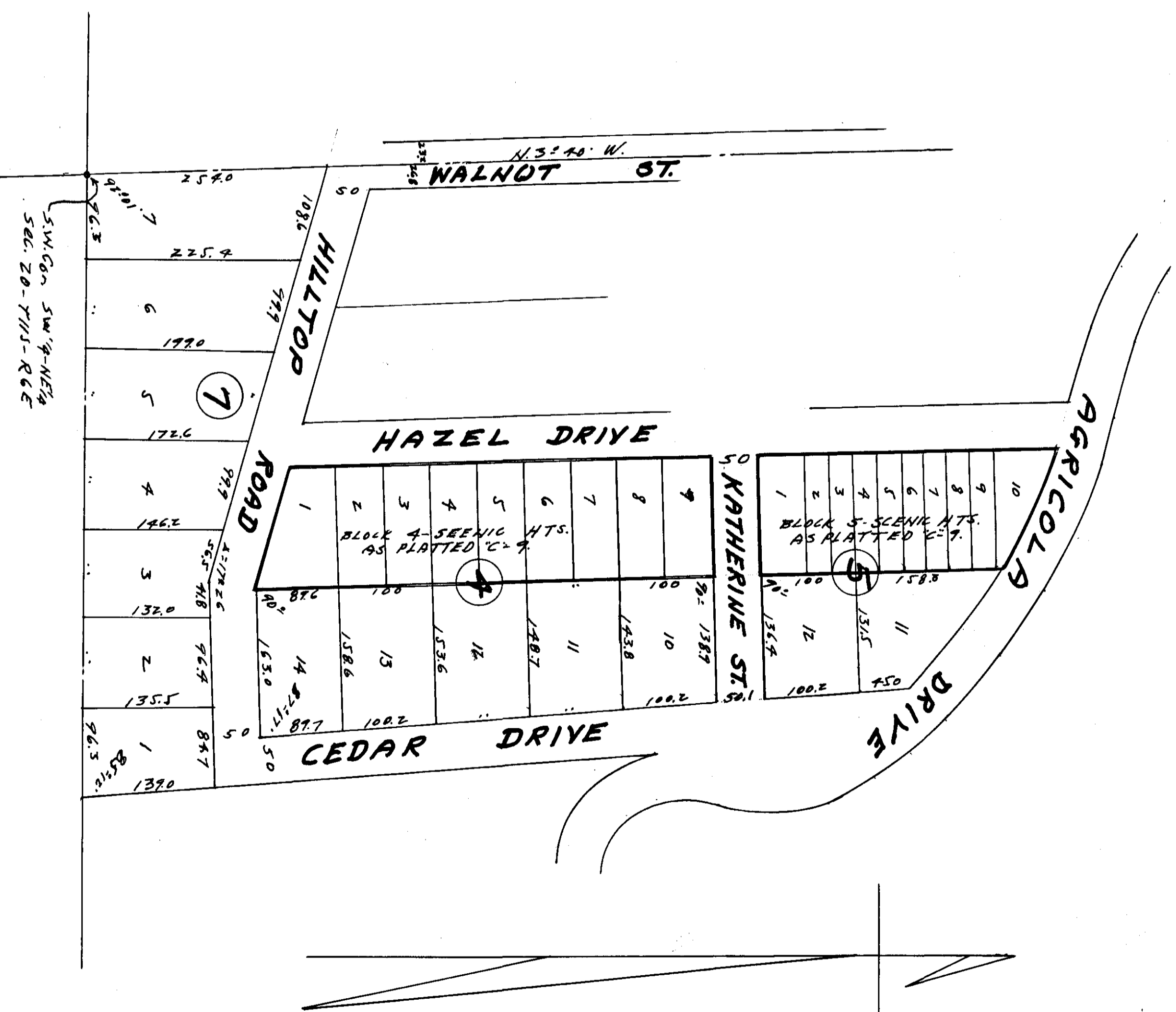


ADDITION TO SCENIC HEIGHTS  
 ADDITION OF BLOCKS 4 & 5  
 LYING IN SW 1/4 - NE 1/4 - SEC 20 - T11S - R 6E.

LOTS OUTLINED IN RED ARE  
 PREVIOUSLY RECORDED AND ARE  
 SHOWN HERE FOR REFERENCE TIE  
 ONLY.



I, Homer H. Turner, a Registered Engineer-Surveyor, hereby certify this to be a true and correct map of the property contained therein, that it correctly shows each lot and its number, length and width, also the adjoining streets and their names.

Signed: *Homer H. Turner* P.E. & L.S.  
 No. 879.

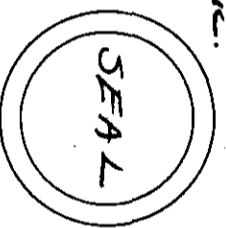
The undersigned, F.T. Agreola, owner of the property embraced in this map, hereby ratifies and adopts the same to be correct.

This the 8th day of Sept. 1928.

Signed: *F.T. Agreola.*

STATE OF ALABAMA:  
 COUNTY OF FLORENCE: J. Noon, a Notary Public in and for said state and county, hereby certify that F.T. Agreola, owner of the land embraced in this map, whose name is signed thereto and who is known to me, acknowledged before me on this day that being informed of the contents, he executed the same voluntarily on the day the 8th day of Sept. 1928.

I, *Frances L. Moon*, Notary Public,  
 My commission expires Dec. 9, 1931.



Approved, this the 24th day of Sept. 1928.  
*W. R. Kunkle*  
 City Engineer.

Approved, this the 30 day of Sept. 1928.  
 City Planning Board.  
*Paul W. Kunkle*  
 Secretary.

Filed in office for record on the 24th day of Sept. 1928.  
 A. M. and duly recorded the 13th day of Oct. 1928.  
*John G. Pugh*  
 Judge of Probate.

*Frank A. Rogers*