

278.1
105
112.1
COUNTRY CLUB HILLS

RAINBOW DRIVE

STATE OF ALABAMA:
COUNTY OF ETOWAH:

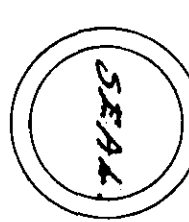
I Troy E. Wofford, a Registered Professional Civil Engineer and Land Surveyor, hereby certify that I have made a detailed survey of the property shown herein, and the same is true and correct as shown on this map. Given under my hand and seal this 14th day of August, 1948. Troy E. Wofford
C.E. No. 514, Exp. 10.16.29

STATE OF ALABAMA:
COUNTY OF ETOWAH:

We the undersigned owners of the lands herein described, hereby certify that we are the true and lawful owners of the same and that we have no objection to the same being surveyed and shown on this map. Given under my hand and seal this 14th day of August, 1948. Troy E. Wofford
C.E. No. 514, Exp. 10.16.29

STATE OF ALABAMA:
COUNTY OF ETOWAH:

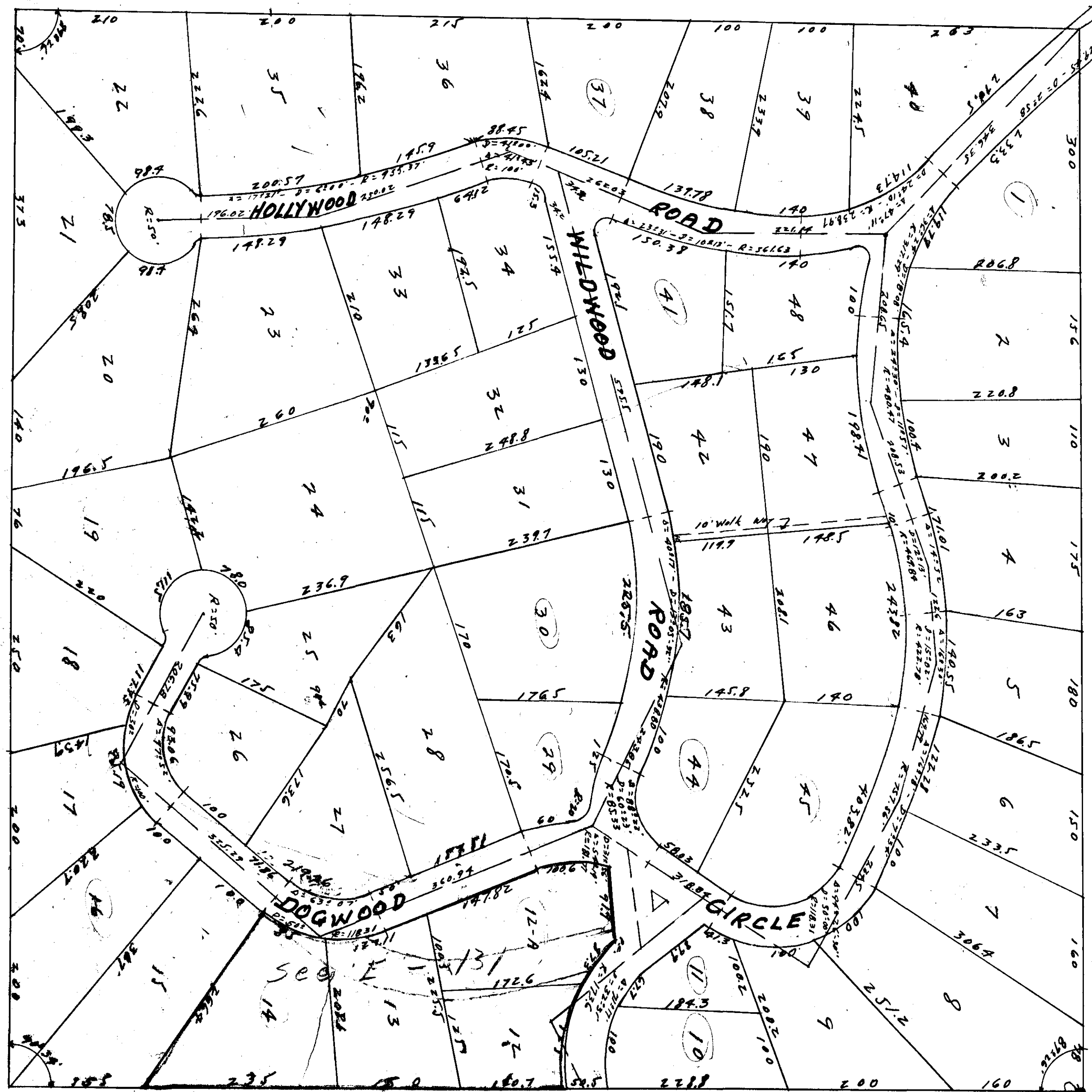
I, J. J. Smith, a Notary Public in and for the State of Alabama, do hereby certify that the above survey was made and the same is true and correct as shown on this map. Given under my hand and seal this 14th day of August, 1948. J. J. Smith
Notary Public



Approved by Etowah City Planning Commission
By: Paul W. H. H. Secretary
August 18, 1948.

Approved: *Carroll* City Engineer
August 18, 1948.

Filed in office for record on the 23rd day of August, A.D. 1948, at 5:44 AM and duly recorded the 5th day of September, 1948.
Frank A. Rogers
Judge of Probate



NE. Cor. SW/4 - Sec. 21 - T15S - R6E