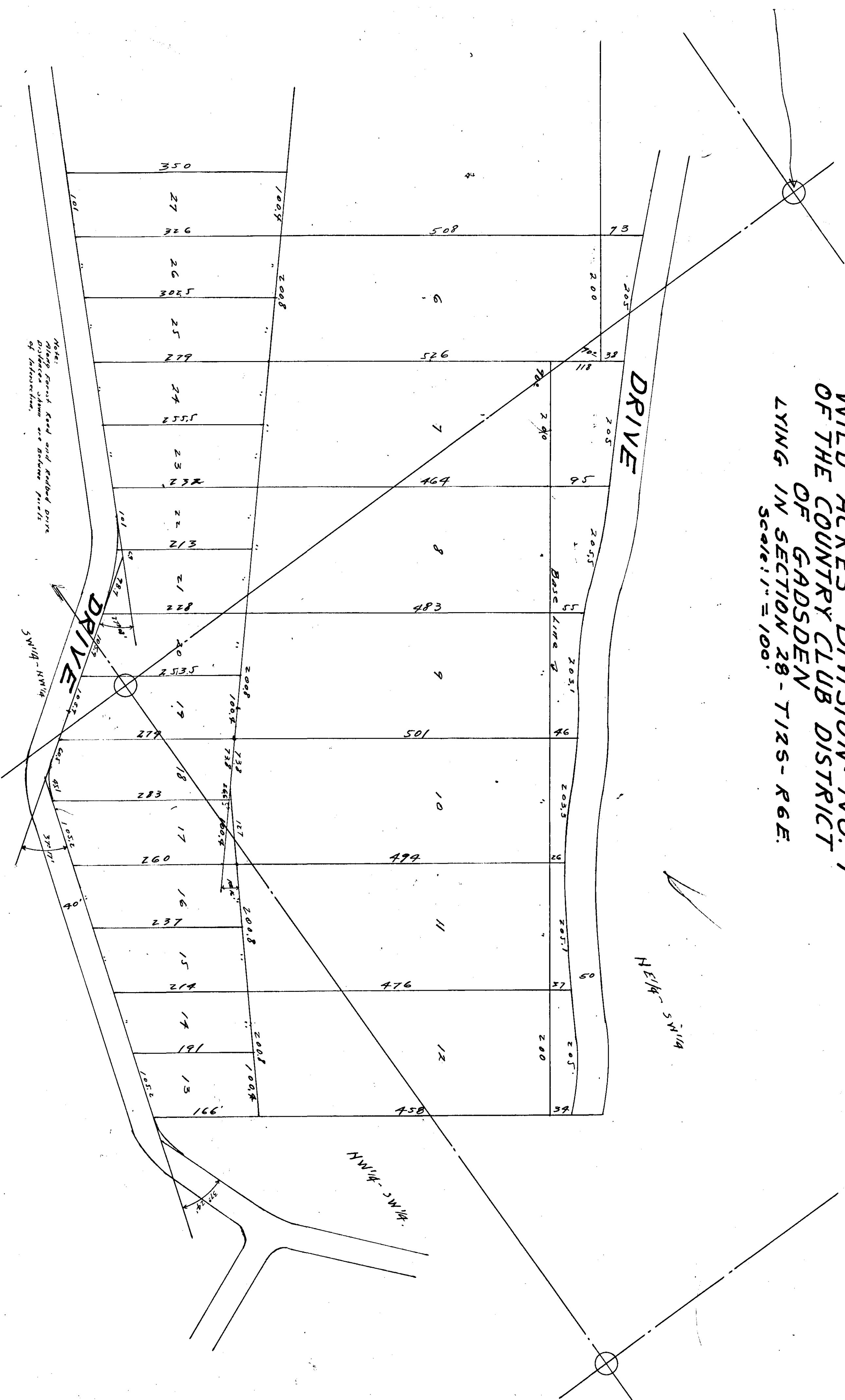


WILD ACRES DIVISION NO. 1
 OF THE COUNTRY CLUB DISTRICT
 OF GADSDEN
 LYING IN SECTION 28 - T12S - R6E.
 Scale: 1" = 100'



I, Homer H. Turner, a Registered Land Surveyor, hereby certify this to be a true and correct map of the property contained therein, that it correctly shows each lot and its number, length and width and also the adjacent streets and their names.
 This the 7th day of April, 1947

Signed: Homer H. Turner
 Land Surveyor No. 979.

Filed in office for record on the 30th day of April, A. D. 1947 at 11:00 o'clock A.M. and duly recorded the 31st day of May 1947.

Signed: Frank A. Maguire
 Judge of Probate

STATE OF ALABAMA: County of ETOWAH: I, Guy Freeman, a Notary Public in and for said State and County, hereby certify that Homer H. Turner, whose name as Land Surveyor, and F.M. Fitts and wife, Alice C. Fitts, owners of land embraced in this map, are signed on this and who are known to me as the persons who executed the same day that being, informed of the contents, they executed the same voluntarily, in their respective capacities on the day the same bear date.
 Given under my hand and seal this the 8th day of April, 1947.

Signed: Guy Freeman
 Notary Public.

The undersigned, F.M. Fitts and wife, Alice Fitts, owners of the property embraced in this map, hereby ratifies and adopts the same to be correct.
 This the 10th day of April, 1947.

Signed: F.M. Fitts
 Alice C. Fitts.

