

STATE OF ALABAMA
JEFFERSON COUNTY

We, the undersigned, C. Hoyt Ellis, Civil Engineer and Land Surveyor and Gadsden Lawns Inc., Gadsden Holding Company and Gadsden Development Company, the latter being a corporation organized under the laws of the State of Alabama, do hereby certify that said lands have been surveyed by C. Hoyt Ellis, Civil Engineer and Surveyor, and that this is a true and correct plat of said lands showing the streets, alleys and public utility easements, the number and dimensions of each lot and block shown in said subdivision and showing the nature of the same, in conformity with the laws of the State of Alabama, and to the satisfaction of the undersigned, this the 27th day of November, 1944.

C. Hoyt Ellis
Civil Engineer & Surveyor

GADSDEN LAWNS INC.
By *[Signature]*

GADSDEN HOLDING COMPANY
By *[Signature]*

GADSDEN DEVELOPMENT COMPANY
By *[Signature]*

By *[Signature]*

By *[Signature]*

By *[Signature]*

By *[Signature]*

By *[Signature]*

By *[Signature]*

By *[Signature]*

By *[Signature]*

By *[Signature]*

By *[Signature]*

By *[Signature]*

By *[Signature]*

By *[Signature]*

By *[Signature]*

By *[Signature]*

By *[Signature]*

By *[Signature]*

By *[Signature]*

By *[Signature]*

By *[Signature]*

By *[Signature]*

By *[Signature]*

By *[Signature]*

By *[Signature]*

By *[Signature]*

By *[Signature]*

By *[Signature]*

By *[Signature]*

By *[Signature]*

By *[Signature]*

By *[Signature]*

By *[Signature]*

By *[Signature]*

By *[Signature]*

By *[Signature]*

By *[Signature]*

By *[Signature]*

By *[Signature]*

By *[Signature]*

By *[Signature]*

By *[Signature]*

By *[Signature]*

By *[Signature]*

By *[Signature]*

By *[Signature]*

By *[Signature]*

By *[Signature]*

By *[Signature]*

By *[Signature]*

By *[Signature]*

By *[Signature]*

By *[Signature]*

By *[Signature]*

By *[Signature]*

By *[Signature]*

By *[Signature]*

By *[Signature]*

By *[Signature]*

By *[Signature]*

By *[Signature]*

By *[Signature]*

By *[Signature]*

By *[Signature]*

By *[Signature]*

By *[Signature]*

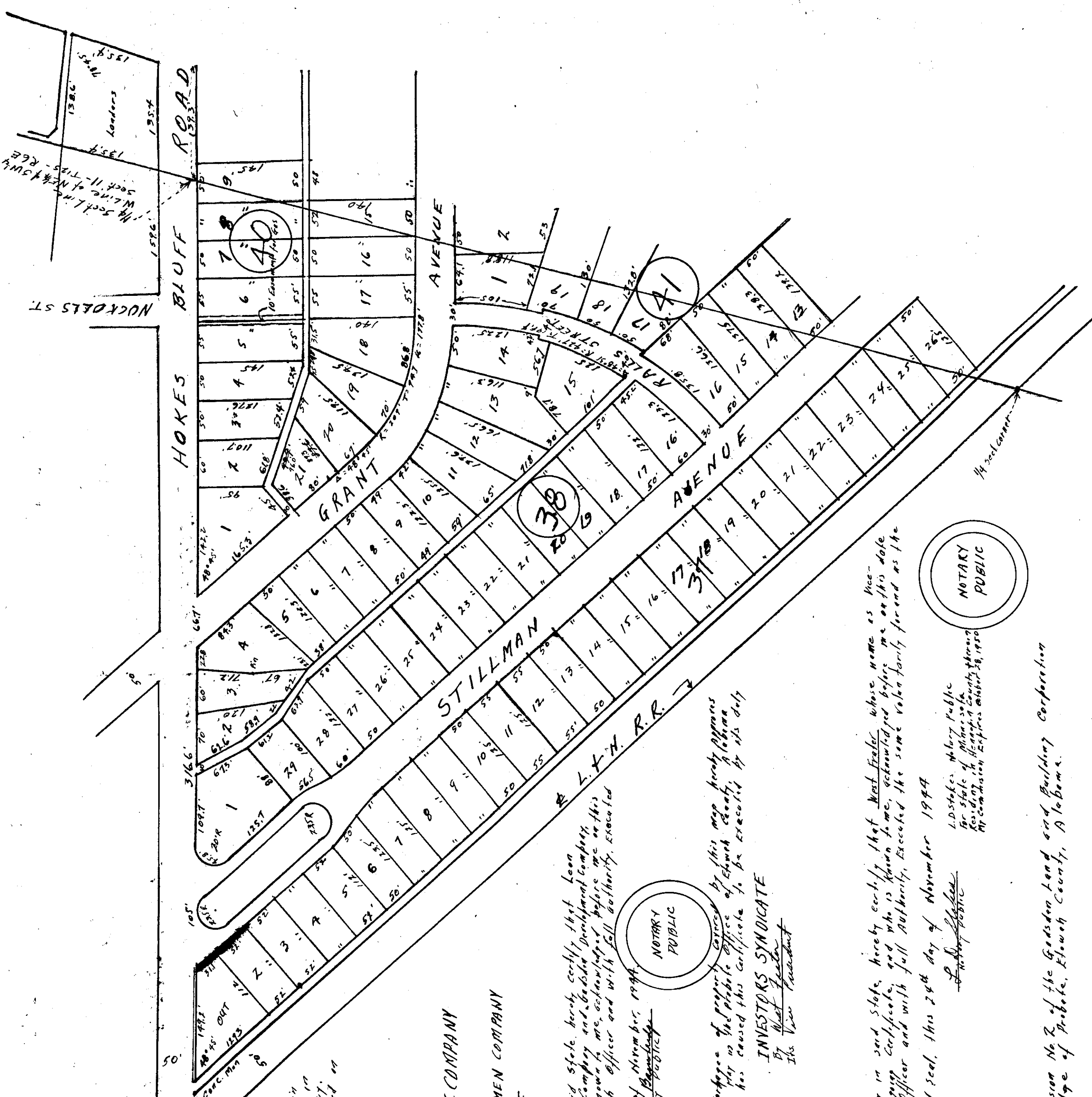
By *[Signature]*

By *[Signature]*

By *[Signature]*

By *[Signature]*

By *[Signature]*



PLAT OF SURVEY
Being a plat survey and re-arrangement of Residential Subdivision No. 2 of the Gadsden Road and Building Corporation as recorded in Plat Book "C" Page 114 & 115, of the Office of Judge of Probate, Etowah County, Alabama.

Approved: *[Signature]* Not. City Engineer, Etowah County, Ala.

Approved: *[Signature]* County Engineer, Etowah County, Ala.

C. HOYT ELLIS
CONSULTING ENGINEER
1010 FRANK NELSON BLDG.
BIRMINGHAM, ALABAMA.

Filed in office for record on 6th day of February, 1945
A. D. 10:44 at 1:30 P.M. and duly recorded in 10 day of February, 1945
E. L. Hurst
Judge of Probate

CORPORATE SEAL

NOTARY PUBLIC

NOTARY PUBLIC

Notary Public
L. D. Stiles, Notary Public
for State of Alabama
Commission Expires March 23, 1950