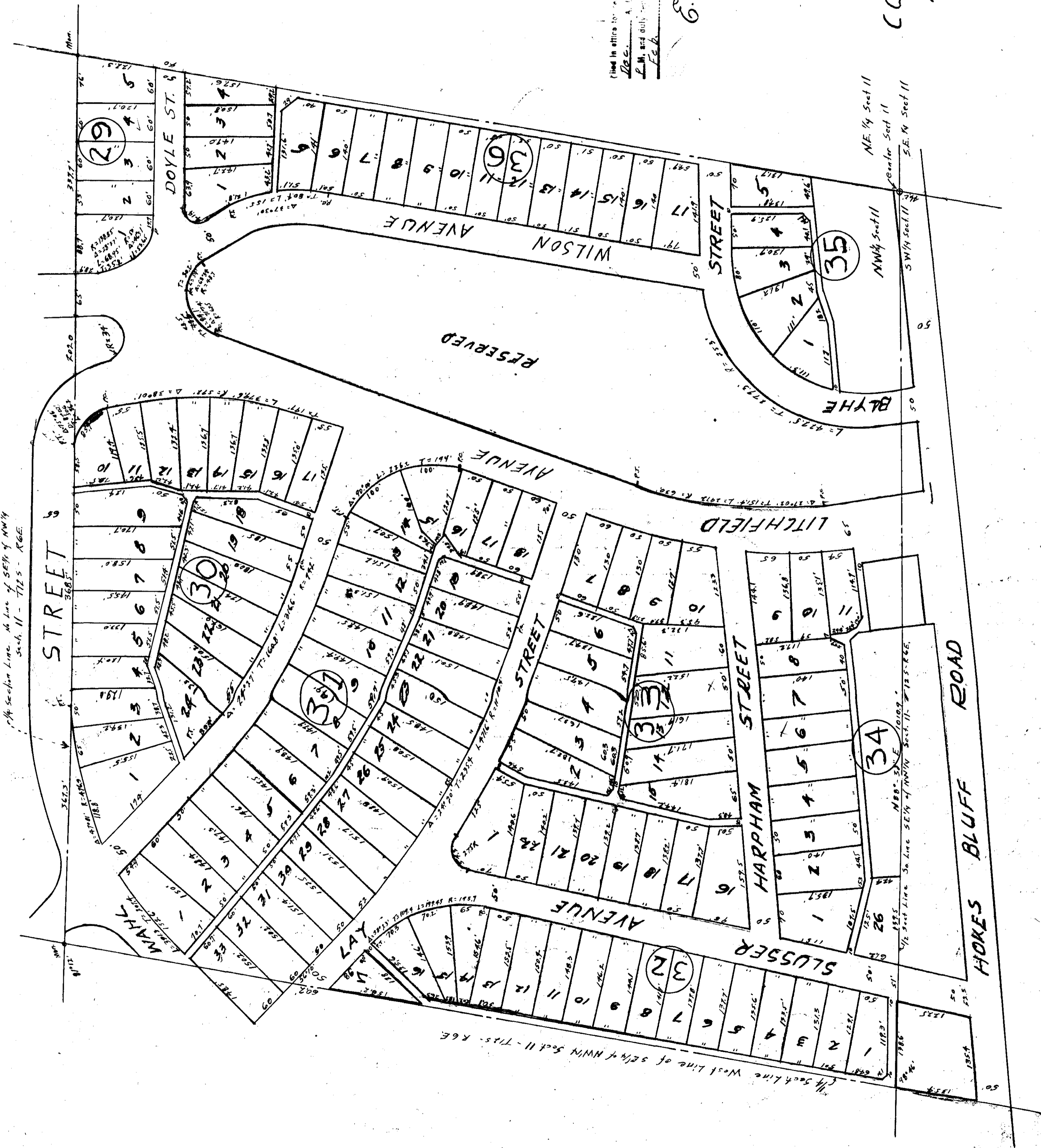


# GARDEN CITY GADSDEN, ALABAMA

RESIDENTIAL SUBDIVISION No 1 November 15, 1944. Scale 1" = 100'



Filed in office for record on 6th day of Dec. 1944 at 11:32 a.m. and duly recorded on 8th day of Feb. 1945.

E. L. Whit  
Judge of Probate

C. HOYT ELLIS  
CONSULTING ENGINEER  
1010 FRANK NELSON BUILDING  
BIRMINGHAM, ALABAMA.

NE 1/4 Sect 11  
Center Sect 11  
SE 1/4 Sect 11