

10-15-03
2 PM

BROADVIEW SUBDIVISION

GADSDEN, ALABAMA.

October 11, 1943.

Scale 1" = 75'

C. HOYT ELLIS, CIVIL ENGINEERS AND DESIGNERS, BIRMINGHAM, ALABAMA.

State of Alabama }
Jefferson County }

We, the undersigned, C. Hoyt Ellis, Civil Engineer and Surveyor, and

Gadsden Homes, Inc., a Corporation, by S.E. Russell, its President, owner of the lands shown on the attached Plat, do hereby certify that said lands have been surveyed by said C. Hoyt Ellis, a Competent Engineer and Surveyor, and that this is a true and correct Plat of said land showing the Streets, Alleys and Public ways and giving the name, length, width and bearing of such Streets, Alleys and Public ways, and the number and dimensions of each lot and Block shown in said Subdivision and showing the relation of the same to existing Streets in the said City of Gadsden, Alabama.

In witness whereof we have caused this certificate to be duly executed on this the 14th day of October, 1943.

Attest:
Almon A. O'Hand,
Secretary.

By S.E. Russell,
Gadsden Homes, Inc.,
President.

State of Alabama }

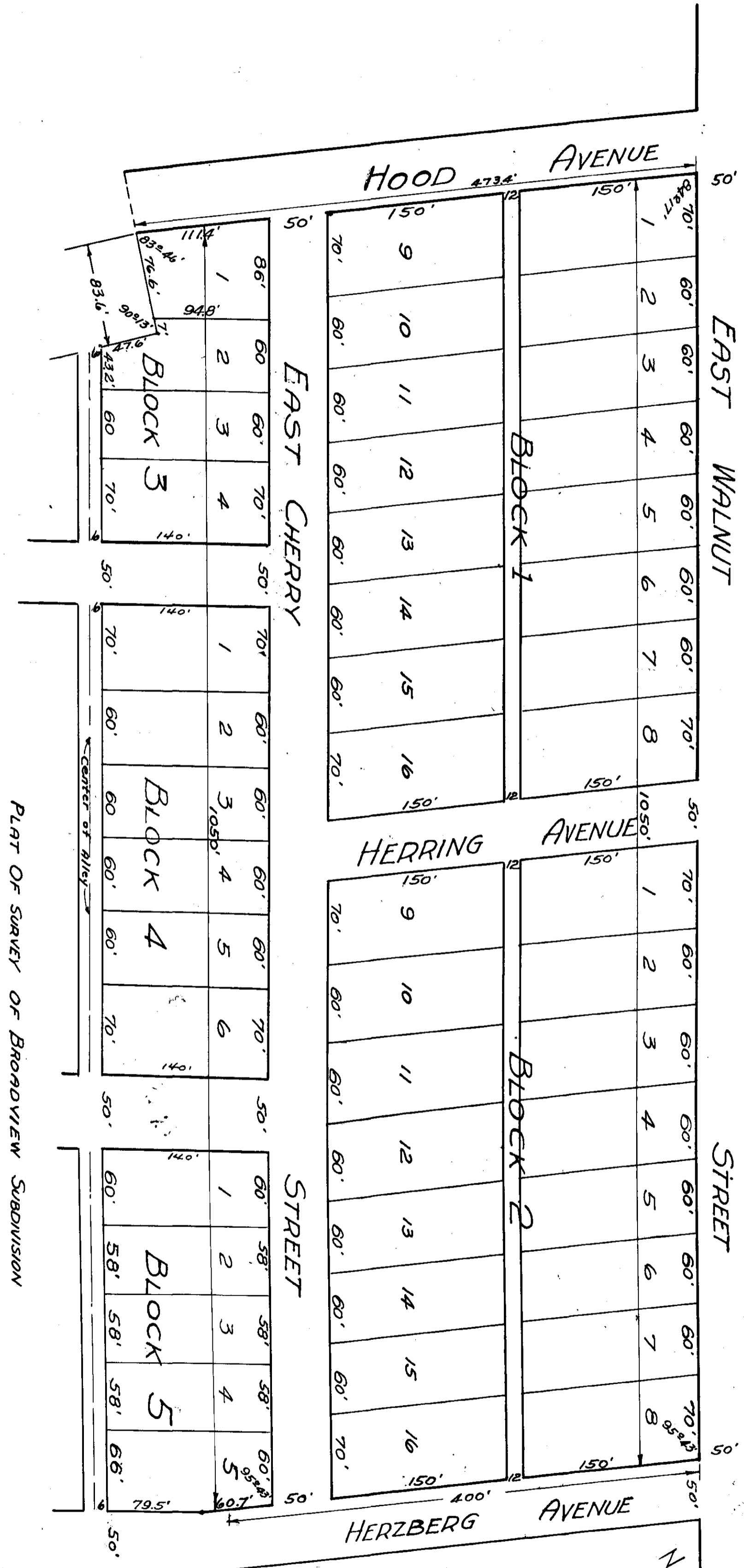
Jefferson County }

I, the undersigned, in and for said County, in said State, hereby certify that S.E. Russell, whose name as President of Gadsden Homes, Inc., a Corporation, is signed to the foregoing certificate and who is known to me, acknowledged before me on this day that being informed of the contents of the Certificate, he, as such officer and with full authority, executed the same voluntarily for and as the act of said Corporation.

Given under my hand this the 14th day of October, 1943.

Approved: Percy Dault,
County Engineer, Etowah County, Ala.

Approved: Cary E. Whittell,
City Engineer of Gadsden, Alabama.



This is a true and correct copy of the original Plat as filed for record on Oct. 15, 1943 at 2:00 P.M. and duly recorded the 16th day of Oct. 1943.

C. Hoyt Ellis
Civil Engineer and Surveyor

PLAT OF SURVEY OF BROADVIEW SUBDIVISION
Being a Subdivision of a portion of the East half of the Northwest Quarter and a portion of the Southwest Quarter of the Northeast 1/4 in Section 20, Township 12 South, of Range 6 East of Huntsville Meridian in Gadsden, Etowah County, Alabama, and a portion of the same property as shown by that certain deed from Cox heirs to Gadsden Homes, Inc., as recorded in the Office of the Judge of Probate for Etowah County, Alabama, in Deed Book 6-N Page 626, Dated May 7th, 1943.