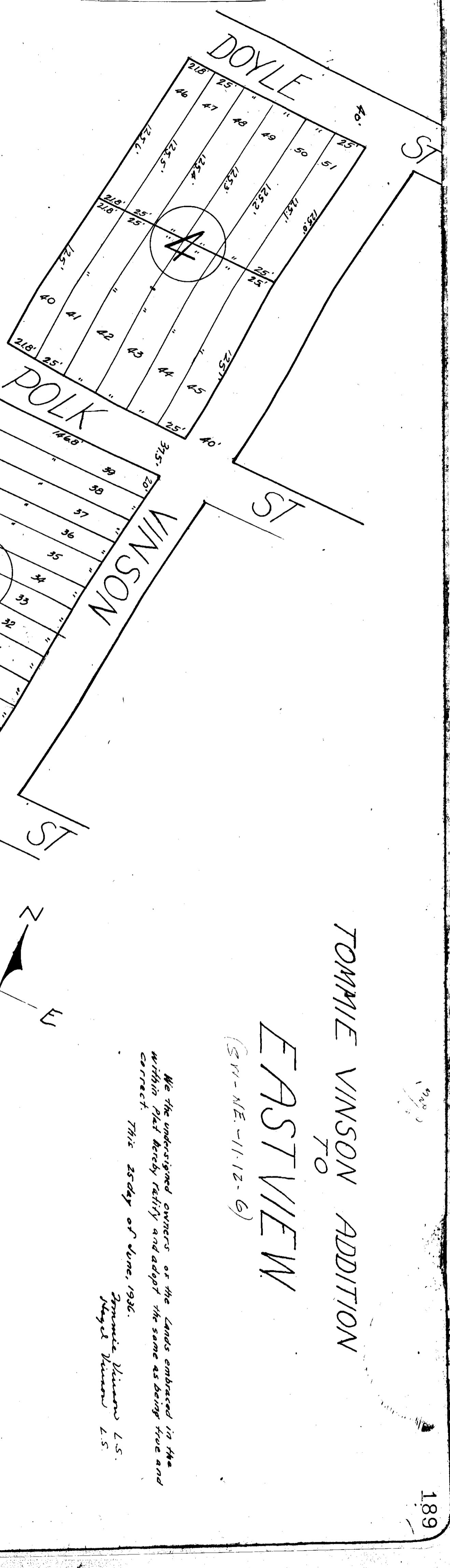


TOMMIE VINSON ADDITION TO EAST VIEW

(SW - NE - 11-12-6)

We the undersigned owners of the lands embraced in the
within plat hereby ratify and adopt the same as being true and
correct. This 25th day of June, 1936.
Tommie Vinson L.S.
Thayer Vinson L.S.



State of Alabama }
 County of Etowah }
 I, E. H. Lee, a Civil Engineer & Surveyor who surveyed
 the property embraced in the within map, hereby certify that the same is
 true and correct as herein represented, and that the said survey and
 map shows the true and correct location of the lands herein
 subdivided with their relation to the lines of the original Government
 Survey. This the 25th day of June, 1936.
 E. H. Lee,
 Civil Engineer & Surveyor

State of Alabama }
 Etowah County }
 I, Collis S. Patterson, a Notary Public in and for said
 County and State, hereby certify that Tommie Vinson and wife, Hazelle Vinson,
 whose names are signed on this day that being informed of the contents of
 this plat, they executed the same voluntarily on the day the same bears
 date. Given under my hand this the 25th day of June, 1936.
 Collis S. Patterson,
 Notary Public

Jone 25th 8
 A. Jone 26th 8
 A. Jone 26th 8
 A. Jone 26th 8

SW 1/4 SW 1/4 NE 1/4
 SEC. 11, TR. 12 S, R. 6 E.
 1. 5200'
 2. 1260'
 3. 1260'
 4. 1260'

West Line SW 1/4 NE 1/4