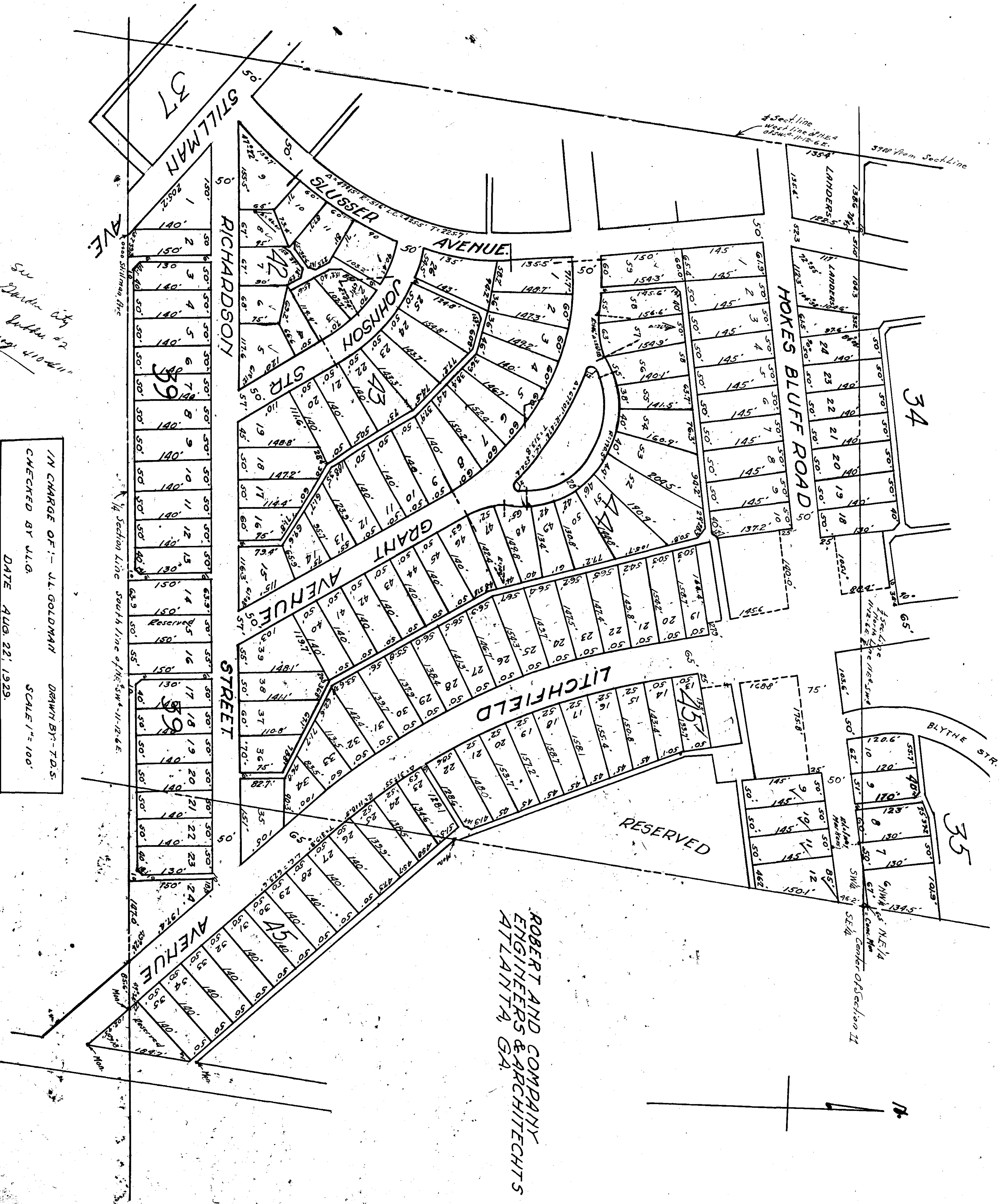


See
 Garden City
 Plat. Book 42
 C. 172, 410-11

IN CHARGE OF: J. L. GOLDMAN
 CHECKED BY: W. G.
 DATE: AUG. 22, 1929.
 DRAWN BY: T. D. S.
 SCALE: 1" = 100'



ROBERT AND COMPANY
 ENGINEERS & ARCHITECTS
 ATLANTA, GA.