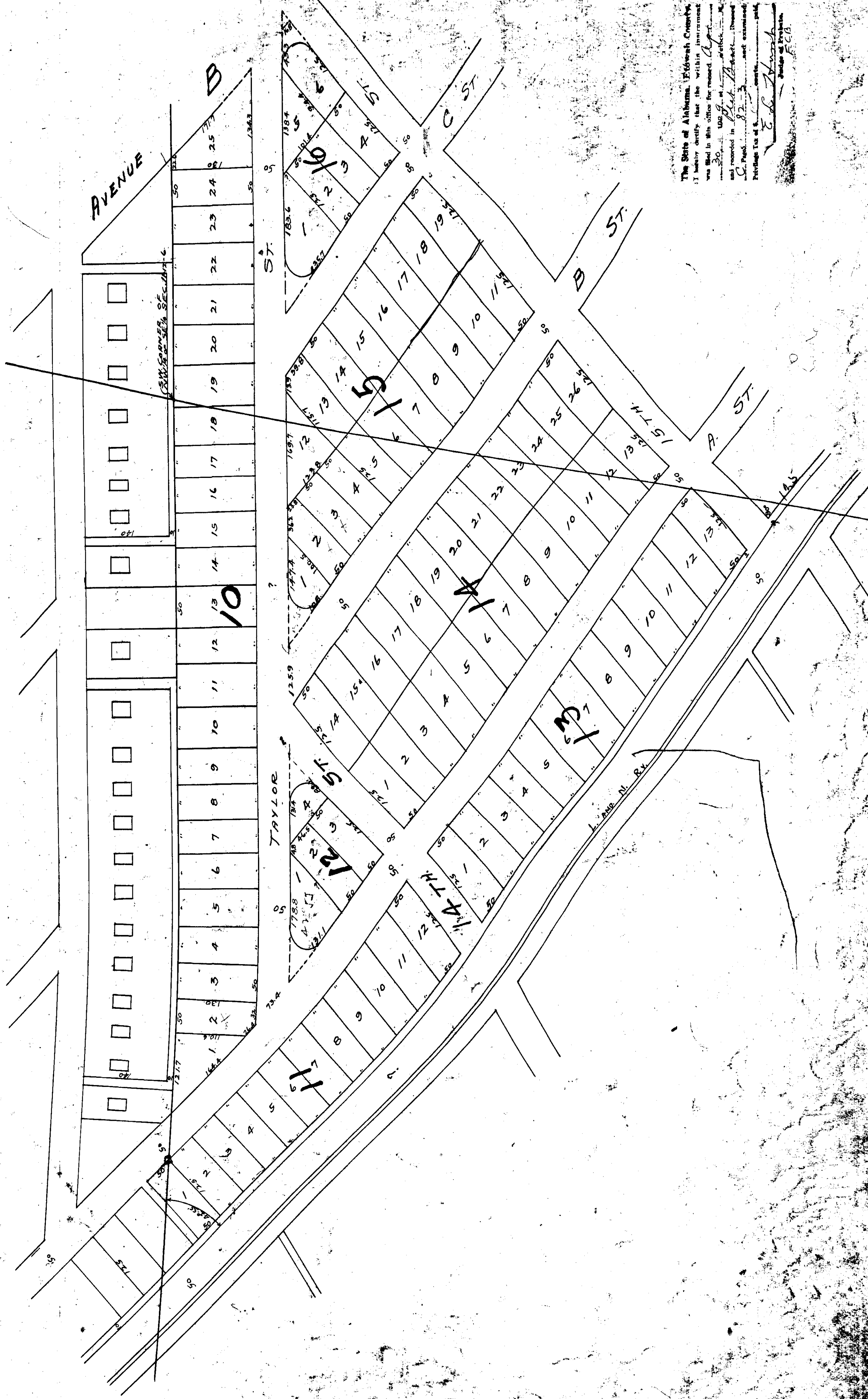


GOODYEAR HIGHLANDS-

LOCATED IN PART NW-SE-PAET SWSE AND PART SE-SW SEC. 11-12-6.
 PHILIP B. HILL, CIVIL ENGINEER.
 FLORENCE AND GARDEN, ALA.
 APR., 1929. T-100

VACATION AND ANNULMENT MISC. 133
 page 45

DEVELOPMENT OF THE
 HOUSING CORPORATION.



The State of Alabama, Litchfield County,
 I hereby certify that the within plat
 was filed in this office for record on
 the 30th day of April, 1929, at
 and recorded in Book 100, Page 45.
 C. P. Hill, Clerk of the Court.
 My commission expires the 31st day of
 1930.