

Map
of
JACKALOE HEIGHTS.

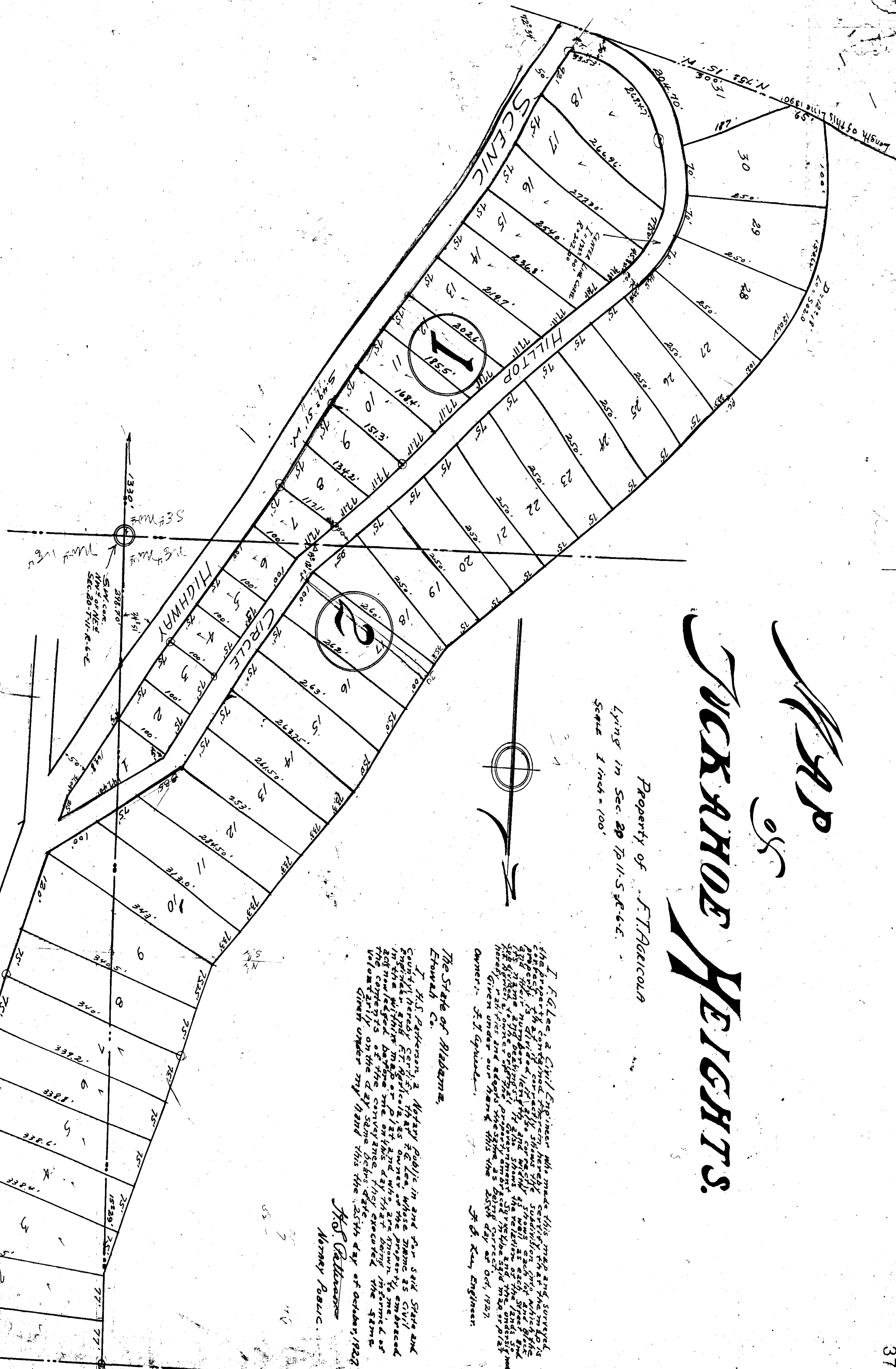
Property of F. THARICOLA
Lying in Sec. 20 T. 11. S. R. 6. E.
Scale 1 inch = 100'

I, F. C. Lee, a Civil Engineer who made this map and surveyed the property containing, defining, dividing, subdividing, and measuring the same, do hereby certify that the map, as shown on this map, is a true and correct copy of the original map, as made by me, and that the same was made in accordance with the provisions of the laws of this State, and that I am a duly licensed and qualified Civil Engineer under the laws of this State, and that I am a resident of the State of Alabama. Given under my hand and seal this 25th day of October, 1929.

F. C. Lee, Engineer

The State of Alabama,
Etowah Co.
I, H. S. Patterson, a Notary Public in and for said State and County, do hereby certify that the above and foregoing map, as shown on this map, is a true and correct copy of the original map, as made by me, and that the same was made in accordance with the provisions of the laws of this State, and that I am a duly licensed and qualified Notary Public under the laws of this State, and that I am a resident of the State of Alabama. Given under my hand this 25th day of October, 1929.

H. S. Patterson,
Notary Public.



The State of Alabama, Etowah County,
I hereby certify that the within-entitled
map is a true and correct copy of the original
map, as made by me, and that the same was
made in accordance with the provisions of the
laws of this State, and that I am a duly
licensed and qualified Civil Engineer under
the laws of this State, and that I am a
resident of the State of Alabama.

F. C. Lee,
Civil Engineer.

John G. Lee,
Judge of Probate.

I, F. C. Lee, a Civil Engineer who made this map and surveyed the property containing, defining, dividing, subdividing, and measuring the same, do hereby certify that the map, as shown on this map, is a true and correct copy of the original map, as made by me, and that the same was made in accordance with the provisions of the laws of this State, and that I am a duly licensed and qualified Civil Engineer under the laws of this State, and that I am a resident of the State of Alabama. Given under my hand and seal this 25th day of October, 1929.

F. C. Lee, Engineer