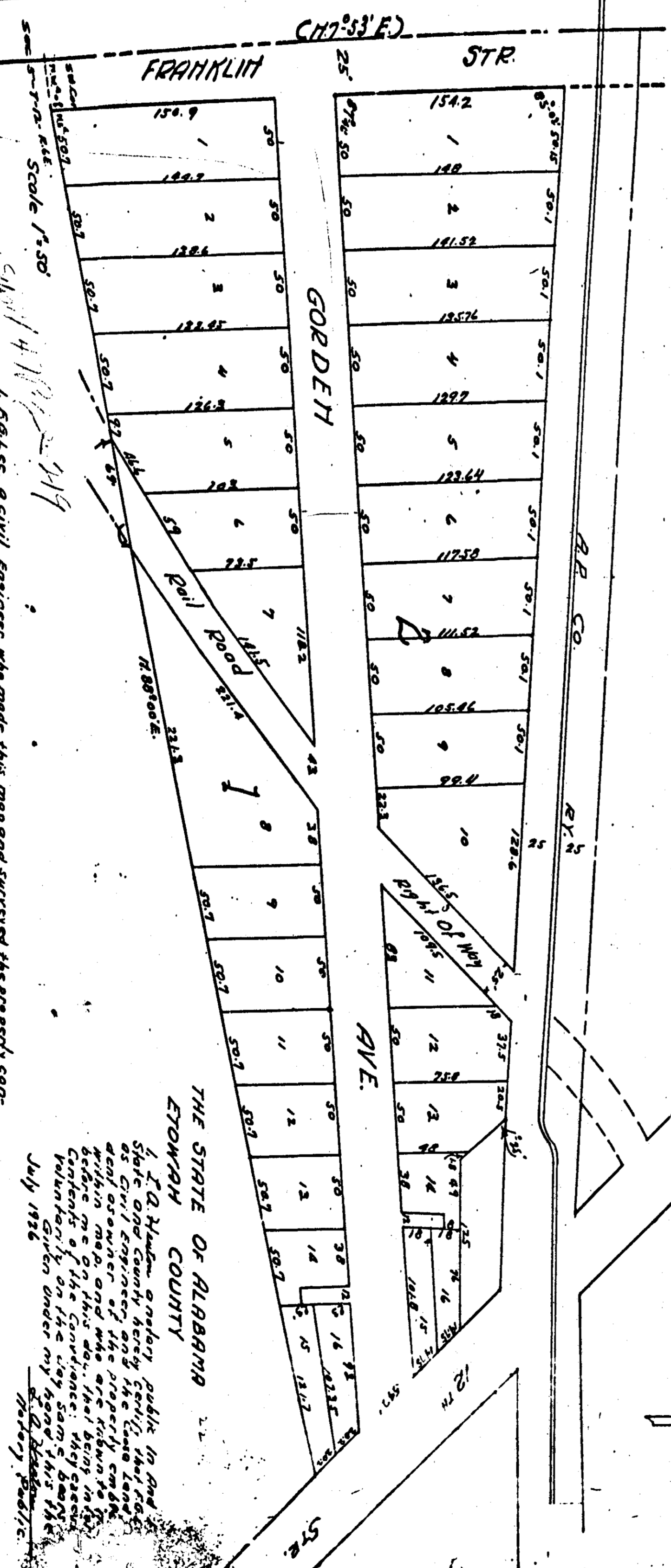


MAP OF
COOSA LAND COS
12TH STR ADDITION TO THE
CITY OF GADSDEN, ALA.



Scale 1" = 50'

RAIL CO. RY.

RAIL OF WOOD

POOL

FRANKLIN STR.

GORDON STR.

AVE.

12TH STR.

Signed: Coosa Land Co. J.H.P. CE

President

THE STATE OF ALABAMA
ETOWAH COUNTY

I, J. Q. Hudson, a surveyor public in and of the State of Alabama, do hereby certify that the above and foregoing plat of land is a true and correct copy of the original survey made by me on this day, the 1st day of June 1926, and that the same is in accordance with the contents of the plat and is a true and correct copy of the same as shown on the original survey.

July 1926

J. Q. Hudson
Surveyor Public

Plat to be returned to the
County Clerk and City Treasurer
at the City of Gadsden, Ala.

W. H. Williams
City Clerk