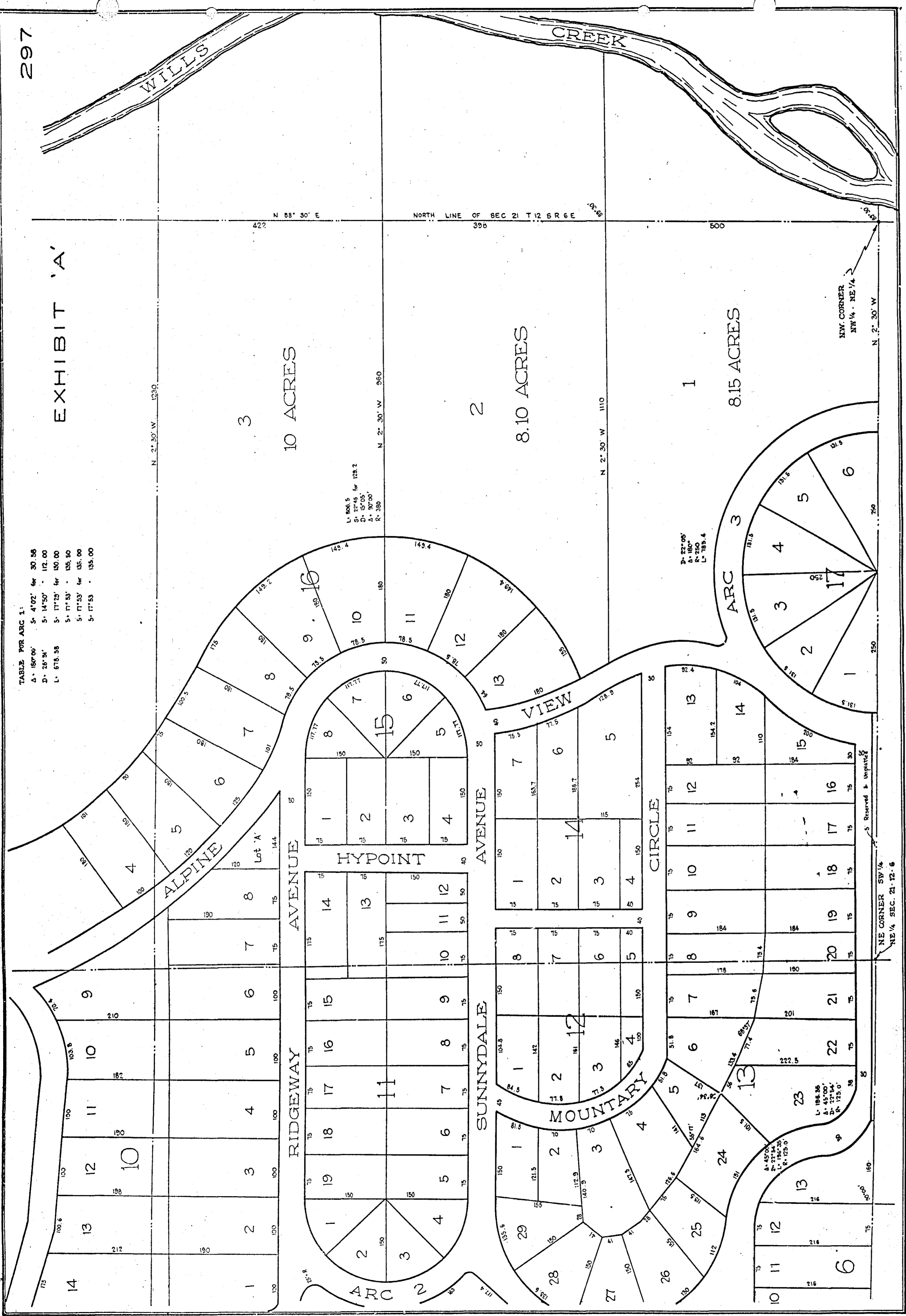


EXHIBIT 'A'

TABLE FOR ARC 1:

A - 187'00"	S - 4'02"	for 30.58
B - 26'51"	S - 14'50"	for 172.00
L - 618.38	S - 17'23"	for 150.00
	S - 17'53"	for 135.50
	S - 17'53"	for 135.00
	S - 17'53"	for 135.00



N 88° 30' E
422
NORTH LINE OF SEC 21 T. 12 S. R. 6 E
395

N 2° 30' W 1230

3
10 ACRES

2
8.10 ACRES

1
8.15 ACRES

NE CORNER
SW 1/4 - NE 1/4
N 2° 30' W

N 2° 30' W 1110

L - 866.5
S - 15° 05'
A - 30' 00"
R - 380

D - 22' 00"
A - 180°
L - 783.4

NE CORNER SW 1/4
NE 1/4 SEC. 21 T. 12 S.

Reserved & Unplatted