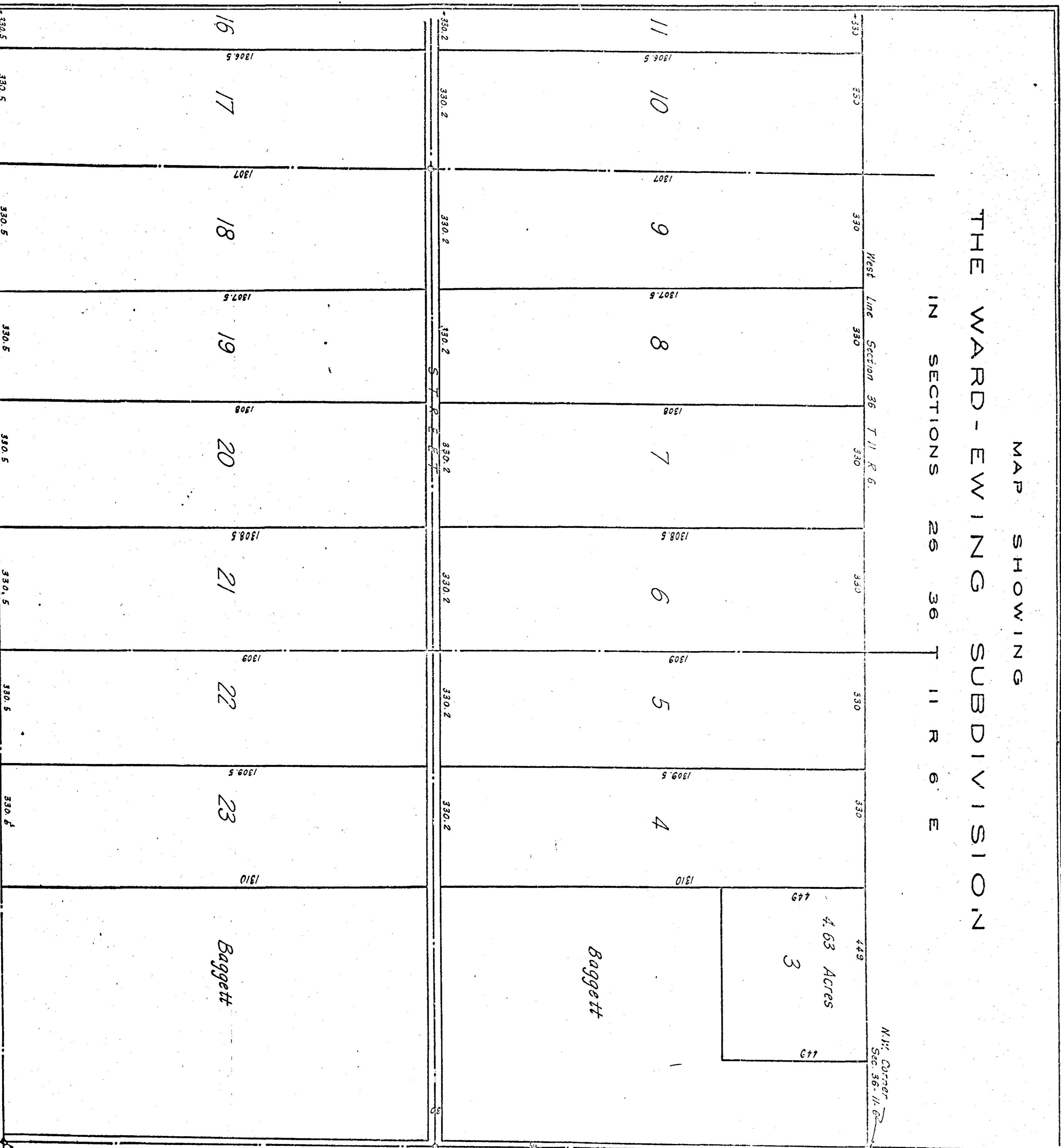


MAP SHOWING
THE WARD - EWING SUBDIVISION
IN SECTIONS 26 36 T 11 R 6 E



SCALE: 1" = 200'



Filed in office for record the 12 day of
March A. D. 1918 at 2 o'clock P.M. and duly
recorded the 12 day of March, 1920.
L. L. Herzberg
Judge of Probate

NE Corner NE - NW 1/4
Sec. 36 - 11 - 6